

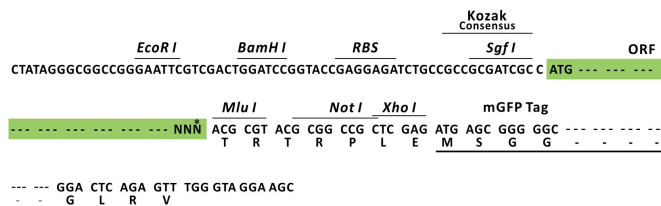
Product datasheet for MR202652L4

Spc25 (BC027121) Mouse Tagged Lenti ORF Clone

Product data:

Product Type:	Expression Plasmids
Product Name:	Spc25 (BC027121) Mouse Tagged Lenti ORF Clone
Tag:	mGFP
Symbol:	Spc25
Synonyms:	2600017H08Rik; 2610205L13Rik; Spbc25
Mammalian Cell Selection:	Puromycin
Vector:	pLenti-C-mGFP-P2A-Puro (PS100093)
E. coli Selection:	Chloramphenicol (34 ug/mL)
ORF Nucleotide Sequence:	The ORF insert of this clone is exactly the same as(MR202652).
Restriction Sites:	SgfI-MluI
Cloning Scheme:	

Cloning sites used for ORF Shuttling:



* The last codon before the Stop codon of the ORF.

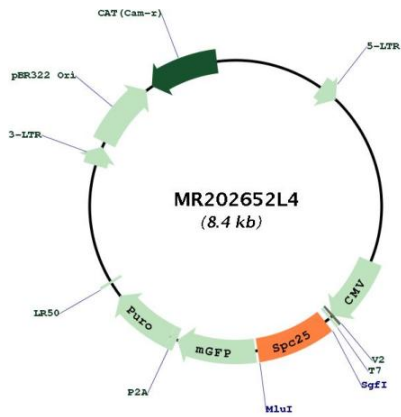
ACCN:	BC027121
ORF Size:	678 bp



[View online »](#)

OTI Disclaimer:	The molecular sequence of this clone aligns with the gene accession number as a point of reference only. However, individual transcript sequences of the same gene can differ through naturally occurring variations (e.g. polymorphisms), each with its own valid existence. This clone is substantially in agreement with the reference, but a complete review of all prevailing variants is recommended prior to use. More info
OTI Annotation:	This clone was engineered to express the complete ORF with an expression tag. Expression varies depending on the nature of the gene.
Components:	The ORF clone is ion-exchange column purified and shipped in a 2D barcoded Matrix tube containing 10ug of transfection-ready, dried plasmid DNA (reconstitute with 100 ul of water).
Reconstitution Method:	<ol style="list-style-type: none"> 1. Centrifuge at 5,000xg for 5min. 2. Carefully open the tube and add 100ul of sterile water to dissolve the DNA. 3. Close the tube and incubate for 10 minutes at room temperature. 4. Briefly vortex the tube and then do a quick spin (less than 5000xg) to concentrate the liquid at the bottom. 5. Store the suspended plasmid at -20°C. The DNA is stable for at least one year from date of shipping when stored at -20°C.
RefSeq:	BC027121 , AAH27121
RefSeq Size:	1344 bp
RefSeq ORF:	680 bp
Locus ID:	66442
Cytogenetics:	2 C2
Gene Summary:	<p>This gene encodes a component of the kinetochore-associated NDC80 protein complex, which is required for the mitotic spindle checkpoint and for microtubule-kinetochore attachment. During meiosis in mouse, the protein localizes to the germinal vesicle and then is associated with the chromosomes following germinal vesicle breakdown. Knockdown of this gene in oocytes results in precocious polar body extrusion, chromosome misalignment and aberrant spindle formation. Alternative splicing results in multiple transcript variants. [provided by RefSeq, Apr 2015]</p>

Product images:



Circular map for MR202652L4