

Product datasheet for MR202642

Prdm9 (BC049903) Mouse Tagged ORF Clone

Product data:

Product Type:	Expression Plasmids
Product Name:	Prdm9 (BC049903) Mouse Tagged ORF Clone
Tag:	Myc-DDK
Symbol:	Prdm9
Synonyms:	BC012016; Dsbc1; G1-419-29; Meissetz; PRDM9-B; Rcr1; repro7
Mammalian Cell Selection:	Neomycin
Vector:	pCMV6-Entry (PS100001)
E. coli Selection:	Kanamycin (25 ug/mL)
ORF Nucleotide Sequence:	>MR202642 ORF sequence Red=Cloning site Blue=ORF Green=Tags(s)

TTTTGTAATACGACTCACTATAGGGCGCCGGGAATTCGTCGACTGGATCCGGTACCGAGGAGATCTGCC
GCC**CGATCGCC**

ATGTACAGGCTGCGAGAGAGAAAGGGCCTTGCCTATGAGGAGGTCAGCGAGCCTCAGGATGATGACTATC
TCTATTGTGAGAAGTGCCAGAATTTCTTCATCGACAGTTGTCCCAACCATGGGCCTCCTTTATTTGTA
AGACAGTATGGTGGACAGGGGCATCCCAACCACTCAGTCCTCAGTCTGCCCCCTGGGCTAAGAATTAGT
CCATCGGGCATCCCTGAAGCTGGACTTGGAGTATGGAATGAAGCATCTGATCTACCAGTCGGTCTGCACT
TTGGCCCCATGAGGGTCAGATCACAGAGGATGAAGAGGCAGCCAACAGTGGTTACTCCTGGCTGATTAC
CAAGGGAAGAACTGCTATGAGTATGTGGATGGACAGGACGAGTCCCAAGCCAACCTGGATGAGGTATGTG
AACTGTGCCCGGGATGATGAAGAGCAGAACCTGGTAGCCTTTCAATATCACAGGAAAATCTTCTATCGAA
CCTGCCGGTTATCAGACCAGGTTGTGAGCTTCTGGTCTGGTATGGGGATGAGTACGGCCAGGAACTGGG
CATTAAGTGGGAAGCAAGATGAAGAAAGGATTCACAGCAGGAAGAGGTGGGCACTATTATGATTCCTTA
AAAAAGAAAGAGAAGAGGAATTCTCCTTGAGAATTTTCATTTTC

ACGCGTACGCGGGCGCTCGAGCAGAACTCATCTCAGAAGAGGATCTGGCAGCAATGATATCCTGGATT
ACAAGGATGACGACGATAAGGTTTAA



[View online »](#)

Protein Sequence: >MR202642 protein sequence
 Red=Cloning site Green=Tags(s)

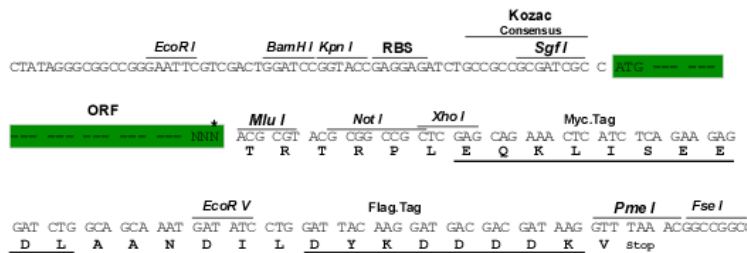
MYRLRERKGLAYEEVSEPQDDDDYLYCEKCNFFIDSCPNHGPPFLVKDSMVDGRHPNHSVLSLPPGLRIS
 PSGIPEAGLGVWNEASDLPVGLHFGPYEGQITDEEEAANSYGYSWLITKGRNCYEYVDGQDESQANWMRYV
 NCARDDEEQNLVAFQYHRKIFYRTRCRVIRPGCELLVWYGDEYQELGIKWGSKMKKGFTAGRGGHYDLSL
 KKKEKREFSLRIFIF

TRTRPLEQKLISEEDLAANDILDYKDDDDKV

Restriction Sites: SgfI-MluI

Cloning Scheme:

Cloning sites used for ORF Shuttling:



* The last codon before the Stop codon of the ORF

ACCN: BC049903

ORF Size: 675 bp

OTI Disclaimer: The molecular sequence of this clone aligns with the gene accession number as a point of reference only. However, individual transcript sequences of the same gene can differ through naturally occurring variations (e.g. polymorphisms), each with its own valid existence. This clone is substantially in agreement with the reference, but a complete review of all prevailing variants is recommended prior to use. [More info](#)

OTI Annotation: This clone was engineered to express the complete ORF with an expression tag. Expression varies depending on the nature of the gene.

Components: The ORF clone is ion-exchange column purified and shipped in a 2D barcoded Matrix tube containing 10ug of transfection-ready, dried plasmid DNA (reconstitute with 100 ul of water).

Reconstitution Method:

1. Centrifuge at 5,000xg for 5min.
2. Carefully open the tube and add 100ul of sterile water to dissolve the DNA.
3. Close the tube and incubate for 10 minutes at room temperature.
4. Briefly vortex the tube and then do a quick spin (less than 5000xg) to concentrate the liquid at the bottom.
5. Store the suspended plasmid at -20°C. The DNA is stable for at least one year from date of shipping when stored at -20°C.

RefSeq: [BC049903](#), [AAH49903](#)

RefSeq Size: 1450 bp

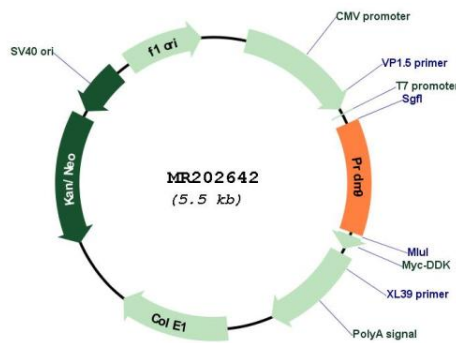
RefSeq ORF: 677 bp

Locus ID: 213389

Cytogenetics: 17 A2

MW: 26 kDa

Product images:



Circular map for MR202642