

Product datasheet for **MR202640**

Arhgdig (NM_008113) Mouse Tagged ORF Clone

Product data:

Product Type:	Expression Plasmids
Product Name:	Arhgdig (NM_008113) Mouse Tagged ORF Clone
Tag:	Myc-DDK
Symbol:	Arhgdig
Synonyms:	Gdi5; Rho-GDI-3; Rho-GDI2; RIP2
Mammalian Cell Selection:	Neomycin
Vector:	pCMV6-Entry (PS100001)
E. coli Selection:	Kanamycin (25 ug/mL)
ORF Nucleotide Sequence:	>MR202640 ORF sequence Red=Cloning site Blue=ORF Green=Tags(s)

TTTTGTAATACGACTCACTATAGGGCGCCGGGAATTCGTCGACTGGATCCGGTACCGAGGAGATCTGCC
GCC**CGATCGCC**

ATGCTGGGCTGGACGCGTGTGAGCTGGGGGAGCAGCTGTTGGAGCTGCTCCGGCTGGCGCTGTGCGCC
GAGTCCTCTTGGCTGACAAGGATGGGGAGTCACTCCATCAGATGAGGTGCTGGACGAAATTGTACCAGA
GTACCAGGCCCTGGGAAGAAGAGCATGCTGGCAATCTGGCACTGGACCCGGGGACGTGAGCTTGGT
AAGTACAAGCAGGCGTCTGGGACCCCTGCCACCCATTATGGACCCAGCCTGCCAACGTGCAGGTGA
CTAGGCTGACACTGCTGACGGAGCAGGCTCCAGGGCCTATCATCATGGACCTTACAGGAGACCTAGATGC
ACTGAAAAACAGGTGTTTGTCTGAAGGAGGGCATTGAATACAAGGTGAAGATCACCTTCAAGGTCAAC
AAGGAGATTGTCAAGTGGCCTCAAATGTCTGCATCACACCTATCGTCGGGGACTGCGTGTGGACAAGGCCA
TCTTCATGGTGGGAAGCTACGGCCCCAGAGCCAGGAGTATGAATTTGTGACTTCAGTGGAGGAAGCACC
AAGAGGAGCATTGGCAGTGGCCTCTACGTGGTCAGGTCCCTTCACTGATGACGACAGGCTGAACCAC
CTGTCTGGGAGTGGCACCTCCATGTCTGCCAGGACTGGAAGGAC

AG**CGGACCG**ACGCGTACGCGCCGCTCGAGCAGAACTCATCTCAGAAGAGGATCTGGCAGCAAATGATATCC
TGGATTACAAGGATGACGACGATAAGGTTTAA



[View online »](#)

Protein Sequence: >MR202640 protein sequence
Red=Cloning site Green=Tags(s)

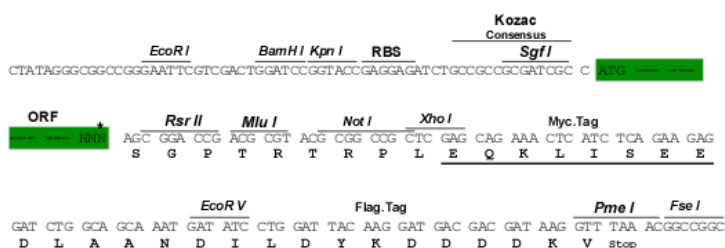
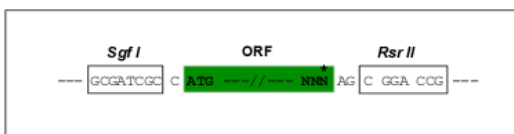
MLGLDACELGEQLLELLRLALCARVLLADKDGESTPSDEVLDEIVPEYQAPGKKSMLAIWQLDPGDVSLV
 KYKQALLGPLPIMDPSLPNVQVTRL TLLTEQAPGPIIMDLTGDLDAKKNQVFLKEGIEYKVKITFKVN
 KEIVSGLKCLHHTYRRGLRVDKAI F MVGSYGPRAQEYEFVTSVEEAPRGALARGLYVVRSLFTDDDRLNH
 LSWEWHLHVCQDWKD

SGPTRTRPLEQKLI SEEDLAANDILDYKDDDDKV

Restriction Sites: SgfI-RsrII

Cloning Scheme:

Cloning sites used for ORF Shuttling:



* The last codon before the Stop codon of the ORF

ACCN: NM_008113

ORF Size: 678 bp

OTI Disclaimer: The molecular sequence of this clone aligns with the gene accession number as a point of reference only. However, individual transcript sequences of the same gene can differ through naturally occurring variations (e.g. polymorphisms), each with its own valid existence. This clone is substantially in agreement with the reference, but a complete review of all prevailing variants is recommended prior to use. [More info](#)

OTI Annotation: This clone was engineered to express the complete ORF with an expression tag. Expression varies depending on the nature of the gene.

Components: The ORF clone is ion-exchange column purified and shipped in a 2D barcoded Matrix tube containing 10ug of transfection-ready, dried plasmid DNA (reconstitute with 100 ul of water).

Reconstitution Method:

1. Centrifuge at 5,000xg for 5min.
2. Carefully open the tube and add 100ul of sterile water to dissolve the DNA.
3. Close the tube and incubate for 10 minutes at room temperature.
4. Briefly vortex the tube and then do a quick spin (less than 5000xg) to concentrate the liquid at the bottom.
5. Store the suspended plasmid at -20°C. The DNA is stable for at least one year from date of shipping when stored at -20°C.

RefSeq: [NM_008113.3](#), [NP_032139.1](#)

RefSeq Size: 1032 bp

RefSeq ORF: 678 bp

Locus ID: 14570

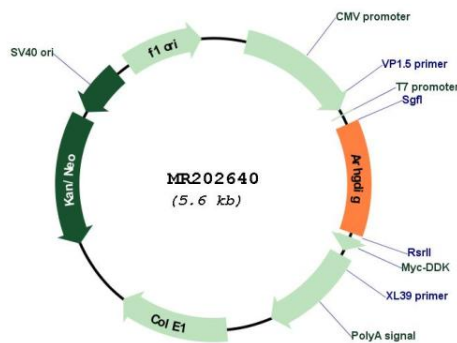
UniProt ID: [Q62160](#)

Cytogenetics: 17 A3.3

MW: 25.3 kDa

Gene Summary: Inhibits GDP/GTP exchange reaction of RhoB. Interacts specifically with the GDP- and GTP-bound forms of post-translationally processed RhoB and Rhog proteins, both of which show a growth-regulated expression in mammalian cells. Stimulates the release of the GDP-bound but not the GTP-bound RhoB protein. Also inhibits the GDP/GTP exchange of RhoB but shows less ability to inhibit the dissociation of prebound GTP.[UniProtKB/Swiss-Prot Function]

Product images:



Circular map for MR202640