

## Product datasheet for MR202630

### Snrpb2 (NM\_021335) Mouse Tagged ORF Clone

#### Product data:

Product Type:	Expression Plasmids
Product Name:	Snrpb2 (NM_021335) Mouse Tagged ORF Clone
Tag:	Myc-DDK
Symbol:	Snrpb2
Synonyms:	2810052G09Rik
Mammalian Cell Selection:	Neomycin
Vector:	pCMV6-Entry (PS100001)
E. coli Selection:	Kanamycin (25 ug/mL)
ORF Nucleotide Sequence:	>MR202630 ORF sequence Red=Cloning site Blue=ORF Green=Tags(s)

TTTTGTAATACGACTCACTATAGGGCGGCCGGAATTCGTCGACTGGATCCGGTACCGAGGAGATCTGCCGCC**CGATCGCC**

ATGGATATCAGACCAAATCACACGATTTATCAACAACATGAATGACAAAATAAAAAGAAGAATTGAAGAGATCCCTGTATGCCCTTTTTCTCAGTTTGGACACGTGGTAGATATTGTGGCTTTAAAGACCATGAA  
GATGAGGGGACAGGCTTTTGTATATTTAAGGAACTGGTTTCATCCCAAATGCTTTGAGACAGTTACAA  
GGATTTCCATTTTATGGTAAACCAATGAGAATTCAGTACGAAAAACAGATTCTGATATAATATCTAAAA  
TGCCTGGTACTTTGCTGACAAGGAAAAGAAAAGGAAAAGAAGAAAGCTAAAACCATGGAACAGGCTGC  
AGCTGCTGAAAACAAGAAGCCTGGTCAGGGAACACCAAATGCAGCTAATACCCAAGGCACTGCAGGCCA  
AATCCTCAGGTCCCTGATTATCCTCCAAATATATCCTATTTCTTAATAACTTACCAGAGGAGACAAATG  
AGATGATGTTATCCATGCTGTTCAACCAAGTTCCCTGGATTCAAGGAAGTTCGCTTGGTACCGGGGAGACA  
TGACATTGCATTTGTAGAATTTGAGAAATGATGGTCAGGCTGGAGCTGCCAGAGATGCTCTGCAGGGGTTT  
AAGATTACACCGTCCCATGCCATGAAGATCACCTATGCCAAGAAG

**ACGCGT**ACGCGGGCGCTCGAGCAGAAACTCATCTCAGAAGAGGATCTGGCAGCAAATGATATCCTGGATT  
ACAAGGATGACGACGATAAGGTTTAA



[View online »](#)

**Protein Sequence:** >MR202630 protein sequence  
 Red=Cloning site Green=Tags(s)

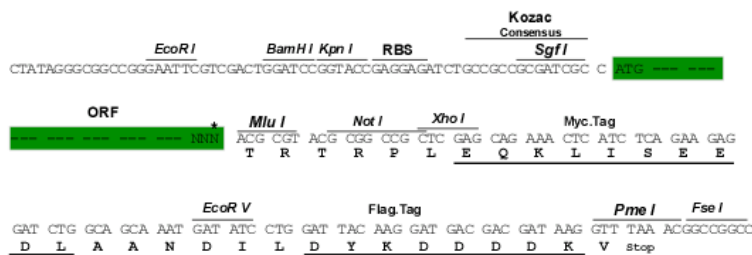
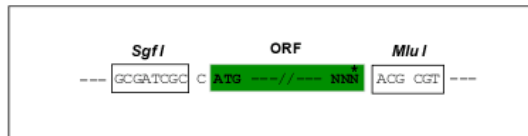
MDIRPNHTIYINNMDKIKKEELKRSLYALFSQFGHVVDIVALKTMKMRGQAFVIFKELGSSTNALRQLQ  
 GFPPFYGKPMRIQYAKTDSDIISKMRGTFADKEKKKKEKKAKTMEQAAAAANKPGQGTNAANTQGTAA  
 NPQVPDYPPNYILFLNLLPEETNEMMLSMFLNQFPGFKEVRLVPGRHDIAFVEFENDGQAGAARDALQGF  
 KITPSHAMKITYAKK

TRTRPLEQKLISEEDLAANDILDYKDDDDKV

**Restriction Sites:** SgfI-MluI

**Cloning Scheme:**

Cloning sites used for ORF Shuttling:



\* The last codon before the Stop codon of the ORF

**ACCN:** NM\_021335

**ORF Size:** 678 bp

**OTI Disclaimer:** The molecular sequence of this clone aligns with the gene accession number as a point of reference only. However, individual transcript sequences of the same gene can differ through naturally occurring variations (e.g. polymorphisms), each with its own valid existence. This clone is substantially in agreement with the reference, but a complete review of all prevailing variants is recommended prior to use. [More info](#)

**OTI Annotation:** This clone was engineered to express the complete ORF with an expression tag. Expression varies depending on the nature of the gene.

**Components:** The ORF clone is ion-exchange column purified and shipped in a 2D barcoded Matrix tube containing 10ug of transfection-ready, dried plasmid DNA (reconstitute with 100 ul of water).

**Reconstitution Method:**

1. Centrifuge at 5,000xg for 5min.
2. Carefully open the tube and add 100ul of sterile water to dissolve the DNA.
3. Close the tube and incubate for 10 minutes at room temperature.
4. Briefly vortex the tube and then do a quick spin (less than 5000xg) to concentrate the liquid at the bottom.
5. Store the suspended plasmid at -20°C. The DNA is stable for at least one year from date of shipping when stored at -20°C.

**RefSeq:** [NM\\_021335.3](#), [NP\\_067310.1](#)

**RefSeq Size:** 1230 bp

**RefSeq ORF:** 678 bp

**Locus ID:** 20639

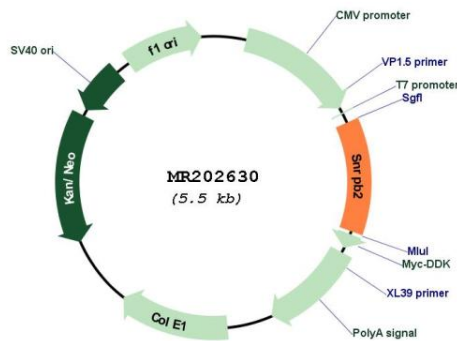
**UniProt ID:** [Q9CQI7](#)

**Cytogenetics:** 2 G1

**MW:** 25.3 kDa

**Gene Summary:** Involved in pre-mRNA splicing as component of the spliceosome. Associated with sn-RNP U2, where it contributes to the binding of stem loop IV of U2 snRNA.[UniProtKB/Swiss-Prot Function]

**Product images:**



Circular map for MR202630