

Product datasheet for MR202626

Psph (NM_133900) Mouse Tagged ORF Clone

Product data:

| | |
|---------------------------|---|
| Product Type: | Expression Plasmids |
| Product Name: | Psph (NM_133900) Mouse Tagged ORF Clone |
| Tag: | Myc-DDK |
| Symbol: | Psph |
| Synonyms: | A1480570; PSP; PSPase |
| Mammalian Cell Selection: | Neomycin |
| Vector: | pCMV6-Entry (PS100001) |
| E. coli Selection: | Kanamycin (25 ug/mL) |
| ORF Nucleotide Sequence: | >MR202626 ORF sequence Red=Cloning site Blue=ORF Green=Tags(s) |

TTTTGTAATACGACTCACTATAGGGCGGCCGGAATTCGTCGACTGGATCCGGTACCGAGGAGATCTGCC
GCC**CGATCGCC**

ATGGTCTCCCACTCAGAGCTGAGGAAGCTCTTCTGTTCCAGCGGATGCAGTGTGCTTTGATGTTGATAGTA
CCGTCACTCAGAGAAGAAGGAATCGATGAGCTGGCCAAATCTGTGGTGTGGAGGCCGAGTGTCTGAAAT
GACACGAAGAGCCATGGGAGGAGCATTGCCTTTAAAGACGCACTCACTCAGCGCTTGGCACTGATCCAG
CCCTCCAGGGATCAAGTCCAGAGGCTCCTAGCTGAGCACCCGCCACATCTGACTCCTGGCATAAGGGAGC
TGGTAAGCCGCCCTCCAGGAGCGTAATGTCCAGGTGTTCCATCTCTGGTGGCTTTCGGAGCATTGTGGA
GCACGTTGCTGCAAAGCTCAATATCCCAACAACCAATGTGTTTGCCAATAGGCTGAAGTTCTACTTTAAT
GGTGAGTACGCAGGCTTTGATGAGATGCAGCCGACAGCCGAGTCGGGTGGGAAAGGAAAGTTTATTCGGT
TTTTAAAGGAAAAATTTCACTTTAAGAAAATAATCATGATTGGAGATGGAGCTACGGACATGGAAGCCTG
CCCTCCTGCCGATGCTTTCATTGGATTTGGAGGCAATGTGATCAGGCAGCAGGTTAAGGACAACGCCAAG
TGGTACATCACTGACTTCGTGGAGCTGCTGGGAGAAGTGGAGGAG

ACGCGTACGCGGCCGCTCGAGCAGAACTCATCTCAGAAGAGGATCTGGCAGCAAATGATATCCTGGATT
ACAAGGATGACGACGATAAGGTTTAA



[View online »](#)

Protein Sequence: >MR202626 protein sequence
Red=Cloning site Green=Tags(s)

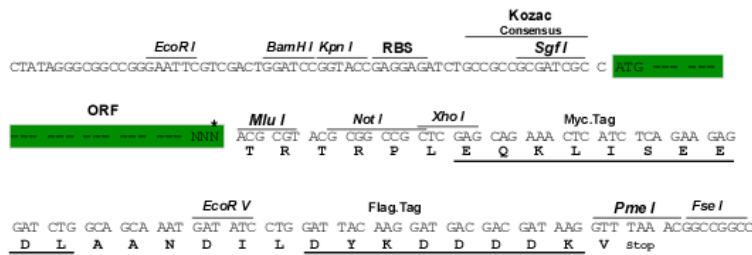
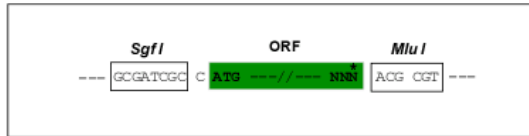
MVSHSELRKLFC SADAVCFD V D S T V I R E E G I D E L A K F C G V E A A V S E M T R A M G G A L P F K D A L T Q R L A L I Q
 P S R D Q V Q R L L A E H P P H L T P G I R E L V S R L Q E R N V Q V F L I S G G F R S I V E H V A A K L N I P T T N V F A N R L K F Y F N
 G E Y A G F D E M Q P T A E S G G K G K V I R F L K E K F H F K K I I M I G D G A T D M E A C P P A D A F I G F G G N V I R Q Q V K D N A K
 W Y I T D F V E L L G E L E E

TRTRPLEQKLISEEDLAANDILDYKDDDDKV

Restriction Sites: SgfI-MluI

Cloning Scheme:

Cloning sites used for ORF Shuttling:



ACCN: NM_133900

ORF Size: 678 bp

OTI Disclaimer: The molecular sequence of this clone aligns with the gene accession number as a point of reference only. However, individual transcript sequences of the same gene can differ through naturally occurring variations (e.g. polymorphisms), each with its own valid existence. This clone is substantially in agreement with the reference, but a complete review of all prevailing variants is recommended prior to use. [More info](#)

OTI Annotation: This clone was engineered to express the complete ORF with an expression tag. Expression varies depending on the nature of the gene.

Components: The ORF clone is ion-exchange column purified and shipped in a 2D barcoded Matrix tube containing 10ug of transfection-ready, dried plasmid DNA (reconstitute with 100 ul of water).

Reconstitution Method:

1. Centrifuge at 5,000xg for 5min.
2. Carefully open the tube and add 100ul of sterile water to dissolve the DNA.
3. Close the tube and incubate for 10 minutes at room temperature.
4. Briefly vortex the tube and then do a quick spin (less than 5000xg) to concentrate the liquid at the bottom.
5. Store the suspended plasmid at -20°C. The DNA is stable for at least one year from date of shipping when stored at -20°C.

RefSeq: [NM_133900.1](#)

RefSeq Size: 1554 bp

RefSeq ORF: 678 bp

Locus ID: 100678

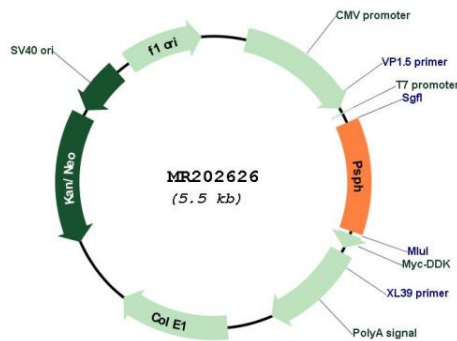
UniProt ID: [Q99LS3](#)

Cytogenetics: 5 G1.3

MW: 25.1 kDa

Gene Summary: Catalyzes the last step in the biosynthesis of serine from carbohydrates. The reaction mechanism proceeds via the formation of a phosphoryl-enzyme intermediates (By similarity). [UniProtKB/Swiss-Prot Function]

Product images:



Circular map for MR202626