

Product datasheet for MR202616

Fkbp3 (NM_013902) Mouse Tagged ORF Clone

Product data:

Product Type:	Expression Plasmids
Product Name:	Fkbp3 (NM_013902) Mouse Tagged ORF Clone
Tag:	Myc-DDK
Symbol:	Fkbp3
Synonyms:	25kDa; FKBP-3; FKBP25
Mammalian Cell Selection:	Neomycin
Vector:	pCMV6-Entry (PS100001)
E. coli Selection:	Kanamycin (25 ug/mL)
ORF Nucleotide Sequence:	>MR202616 ORF sequence Red=Cloning site Blue=ORF Green=Tags(s)

TTTTGTAATACGACTCACTATAGGGCGGCCGGAATTCGTCGACTGGATCCGGTACCGAGGAGATCTGCC
GCC**CGATCGCC**

ATGGCGGCGGCTGTTCCGCAGCGTGCATGGACCGTGGAGCAGCTGCGCAGCGAGCAGCTGCCAAGAAGG
ACATTATCAAGTTTCTGCAGGATCACGGTTCAGATTCGTTTCTTGCAGAGCATAAATTACTGGGAAACAT
CAAAAATGTTGCCAAGACTGCTAATAAGGACATTTGGTTAATGCCTATAACCATCTTTTGAAGTAAG
CGTTTCAAGGACTGAAACTATAAGTAAAGTGTCTGAACAGGTGAAAAATGTGAAGCTTAGTGACGATA
AACCCAAAGACTCCAAGTCTGAAGAGACTCTTGATGAGGGTCCACCAAAATACACAAAATCTATTCTAAA
AAAGGGGAGATAAAACCACTTTCCTAAAAAGGGGGATGTTGTTCACTGCTGGTATACAGGGACACTCCCA
GATGGGACTGTTTTGATACTAATATTCAAACAAGTTCAAAGAAGAAGAAAAATGCCAAACCTTTAAGTT
TTAAGGTTGGAGTAGCAAGGTTATCAGAGGATGGGATGAAGCGCTCTTGACTATGAGTAAAGGAGAAAA
GGCTCGACTGGAGATCGAACCAGAATGGGCTACGGAAAGAAAGGACAGCCCGATGCCAAATTCACCA
AACACCAAGCTCATTTTTGAAGTGAATTAGTAGACATTGAC

ACGCGTACGCGGCGCTCGAGCAGAACTCATCTCAGAAGAGGATCTGGCAGCAATGATATCCTGGATT
ACAAGGATGACGACGATAAGGTTTAA



[View online »](#)

Protein Sequence: >MR202616 protein sequence
Red=Cloning site Green=Tags(s)

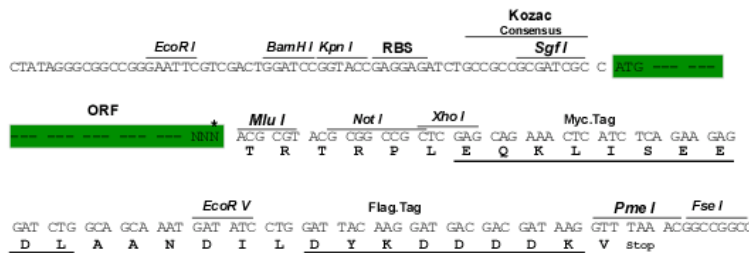
MAAAVPQRAWTVELRSEQLPKKDIKFLQDHGSDSFLAEHKLLGNIKNVAKTANKDHLVNAVNHLEFESK
 RFKGTETISKVSEQVKNVKLSDDPKDSKSEETLDEGPPKYTKSILKKGDKTNFPKKGDVVHCWYGTLP
 DGTVFDTNIQTSSKKNNAKPLSFKVGKVKIRGWDEALLTMSKGEKARLEIEPEWAYGKKGQPDAKIPP
 NTKLIFEVELVDID

TRTRPLEQKLISEEDLAANDILDYKDDDDKV

Restriction Sites: Sgfl-MluI

Cloning Scheme:

Cloning sites used for ORF Shuttling:



* The last codon before the Stop codon of the ORF

ACCN: NM_013902

ORF Size: 675 bp

OTI Disclaimer: The molecular sequence of this clone aligns with the gene accession number as a point of reference only. However, individual transcript sequences of the same gene can differ through naturally occurring variations (e.g. polymorphisms), each with its own valid existence. This clone is substantially in agreement with the reference, but a complete review of all prevailing variants is recommended prior to use. [More info](#)

OTI Annotation: This clone was engineered to express the complete ORF with an expression tag. Expression varies depending on the nature of the gene.

Components: The ORF clone is ion-exchange column purified and shipped in a 2D barcoded Matrix tube containing 10ug of transfection-ready, dried plasmid DNA (reconstitute with 100 ul of water).

Reconstitution Method:

1. Centrifuge at 5,000xg for 5min.
2. Carefully open the tube and add 100ul of sterile water to dissolve the DNA.
3. Close the tube and incubate for 10 minutes at room temperature.
4. Briefly vortex the tube and then do a quick spin (less than 5000xg) to concentrate the liquid at the bottom.
5. Store the suspended plasmid at -20°C. The DNA is stable for at least one year from date of shipping when stored at -20°C.

RefSeq: [NM_013902.3](#)

RefSeq Size: 945 bp

RefSeq ORF: 675 bp

Locus ID: 30795

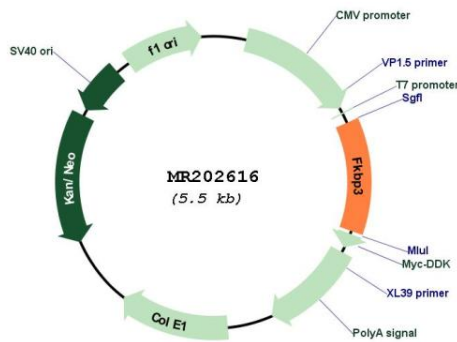
UniProt ID: [Q62446](#)

Cytogenetics: 12 C1

MW: 25.1 kDa

Gene Summary: FK506- and rapamycin-binding proteins (FKBPs) constitute a family of receptors for the two immunosuppressants which inhibit T-cell proliferation by arresting two distinct cytoplasmic signal transmission pathways. PPIases accelerate the folding of proteins (By similarity). [UniProtKB/Swiss-Prot Function]

Product images:



Circular map for MR202616