

Product datasheet for **MR202606**

Chkb (BC068195) Mouse Tagged ORF Clone

Product data:

Product Type:	Expression Plasmids
Product Name:	Chkb (BC068195) Mouse Tagged ORF Clone
Tag:	Myc-DDK
Symbol:	Chkb
Synonyms:	CK/EK, CK/EK-beta
Mammalian Cell Selection:	Neomycin
Vector:	pCMV6-Entry (PS100001)
E. coli Selection:	Kanamycin (25 ug/mL)
ORF Nucleotide Sequence:	>MR202606 ORF sequence Red=Cloning site Blue=ORF Green=Tags(s)

TTTTGTAATACGACTCACTATAGGGCGCCGGGAATTCGTCGACTGGATCCGGTACCGAGGAGATCTGCC
GCC**CGATCGCC**

ATGGCCCGTTTCCATGGTATGGAGATGCCCTTCACTAAGGAGCCCGATGGTTGTTGGGACCATGGAGC
GGTACCTGAAGCAGATCCAGGACTTGCCTTCCACCAGCCTTCCCCAGATGAACCTGGTAGAGATGTACAG
CCTCAAGGACGAGATGAACAGCCTCAGGAAGTTACTAGACGATACCCCGTACCAGTGGTCTTCTGCCAC
AATGACATCCAGGAAGGAAACATCTTGTGCTTTCAGAGCCAGACAGTGATGATAACCTCATGTTGGTTG
ATTTTGTAGTACAGTAGTTATAACTACAGGGGCTTGGACATTGGGAATCATTTTTGTGAGTGGTTTATGA
TTATACTTATGAAGAATGGCCTTCTACAAAGCAAGACCCACGGACTACCCCACTAGAGAACAGCAGCTC
CATTTTATTCGCCATTATCTGGCAGAGGTTTCAAGGGTGAGATCCTCTCCGAAGAGGAACAGAAGAAAC
GGGAAGAAGAATTGCTGCTAGAGATCAGTCGGTACTCCCTGGCATCTCACTTTTTCTGGGGTCTGTGGTC
CACCTGCAGGCTTCGATGTCCACTATAGAGTTCGGTACTTGGAGTATGCCCAATCTCGGTTCCAGTTC
TACTTCCAGCAGAAGGGCCAGCTGACGAGTTCATCATCC

ACGCGTACGCGGCGCTCGAGCAGAACTCATCTCAGAAGAGGATCTGGCAGCAATGATATCTGGATT
ACAAGGATGACGACGATAAGGTTTAA



[View online »](#)

Protein Sequence: >MR202606 protein sequence
 Red=Cloning site Green=Tags(s)

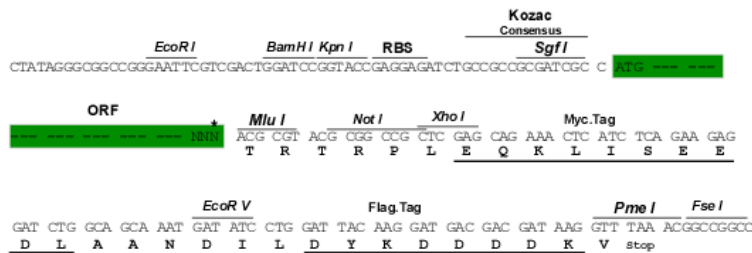
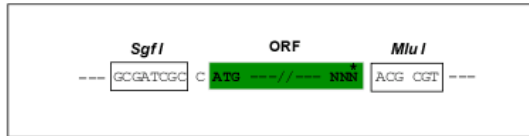
MARFHGMEMPFTKEPRWLFGMTERYLKQIQDLPSTSLPQMNLVEMYSLKDEMNSLRKLLDDTPSPVVFCH
 NDIQEGNILLSEPDSDDNMLVDFEYSSNYRGFDIGNHFCWVYDYTYEWPYKARPTDYPTREOQL
 HFIRHYLAEVQKGEILSEEEQKKREEELLLLEISRYSLASHFFWGLWSTLQASMSTIEFGYLEYAQSRFQF
 YFQQKGLTSSPSS

TRTRPLEQKLISEEDLAANDILDYKDDDDKV

Restriction Sites: SgfI-MluI

Cloning Scheme:

Cloning sites used for ORF Shuttling:



* The last codon before the Stop codon of the ORF

ACCN: BC068195

ORF Size: 672 bp

OTI Disclaimer: The molecular sequence of this clone aligns with the gene accession number as a point of reference only. However, individual transcript sequences of the same gene can differ through naturally occurring variations (e.g. polymorphisms), each with its own valid existence. This clone is substantially in agreement with the reference, but a complete review of all prevailing variants is recommended prior to use. [More info](#)

OTI Annotation: This clone was engineered to express the complete ORF with an expression tag. Expression varies depending on the nature of the gene.

Components: The ORF clone is ion-exchange column purified and shipped in a 2D barcoded Matrix tube containing 10ug of transfection-ready, dried plasmid DNA (reconstitute with 100 ul of water).

Reconstitution Method:

1. Centrifuge at 5,000xg for 5min.
2. Carefully open the tube and add 100ul of sterile water to dissolve the DNA.
3. Close the tube and incubate for 10 minutes at room temperature.
4. Briefly vortex the tube and then do a quick spin (less than 5000xg) to concentrate the liquid at the bottom.
5. Store the suspended plasmid at -20°C. The DNA is stable for at least one year from date of shipping when stored at -20°C.

RefSeq: [BC068195](#), [AAH68195](#)

RefSeq Size: 1256 bp

RefSeq ORF: 674 bp

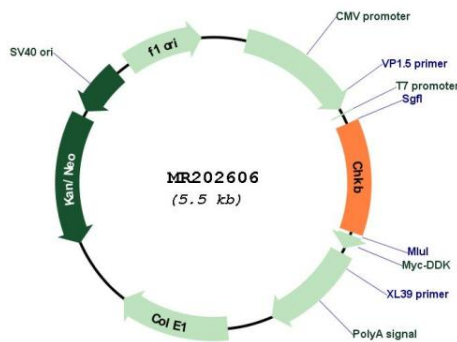
Locus ID: 12651

Cytogenetics: 15 E3

MW: 26.8 kDa

Gene Summary: Has a key role in phospholipid metabolism, and catalyzes the first step of phosphatidylethanolamine and phosphatidylcholine biosynthesis.[UniProtKB/Swiss-Prot Function]

Product images:



Circular map for MR202606