

Product datasheet for MR202584

Klrb1c (BC061168) Mouse Tagged ORF Clone

Product data:

Product Type:	Expression Plasmids
Product Name:	Klrb1c (BC061168) Mouse Tagged ORF Clone
Tag:	Myc-DDK
Symbol:	Klrb1c
Synonyms:	CD161, Nkrp1-c, NK1.1, NK-RP1, Nk-1.2, NK-1.1, NKR-P1, NKR-P1C, Nkrp1c, NKR-P1 40
Mammalian Cell Selection:	Neomycin
Vector:	pCMV6-Entry (PS100001)
E. coli Selection:	Kanamycin (25 ug/mL)
ORF Nucleotide Sequence:	>MR202584 representing BC061168 Red=Cloning site Blue=ORF Green=Tags(s)

TTTTGTAATACGACTCACTATAGGGCGGCCGGAATTCGTCGACTGGATCCGGTACCGAGGAGATCTGCC
GCCCGATCGCC

ATGGACACAGCAAGTATCTACCTCGGTTTAAAGCCACCCAGGACACTGGGGGCTTGGCATGAGTCACCCC
CATCTCTCCCCAGATGCCTGTCGGTGCCACGTTACACAGGTTGGCTCTGAAGCTCAGCTGTGCTGG
GCTCATCCTCCTGTCTGACCCTGATTGGGATGAGTGTCTTAGTGCAGTCTTAGTACAAAACCATCA
AGAGAAAAATGCTGTGTGTTTATTCAAGAGAACCTGAATAAAACAACAGATTGTTCAAGTTAATTTAGAGT
GCCACAAGACTGGCTTTTACACCGAGATAAGTGTCTTTCAGTTTCTCAAGTTTCAACACTTGGGAGGA
AGGTCAAGCTGACTGTGGTAGAAAAGGAGCCACTTTGCTGCTCATTCAAGACCAAGAAGAACTGAGATTC
CTACTGGACTCAATAAAGGAAAAATATAATTCATTTTGGATTGGACTAAGTTTCACATTGCCAGACATGA
ACTGGAAGTGGATAAATGGCACAACCTTTCAATTCTGATGTACTAAAAATCACTGGTGTCACTGAAAATGG
CAGCTGTGCCTCCATCTTAGGAGATAAAGTACTCCTGAGAGCTGTGCTTCAGACAACCGTTGGATCTGC
CAAAGGAACTAAACCATGAAACCCCGAGTAATGACTCC

ACGCGTACGCGGCGCTCGAGCAGAACTCATCTCAGAAGAGGATCTGGCAGCAATGATATCTGGATT
ACAAGGATGACGACGATAAGGTTTAA



[View online »](#)

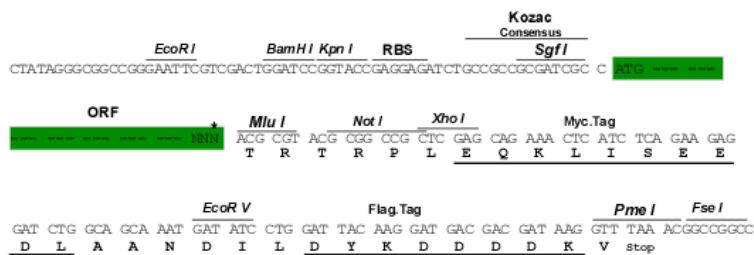
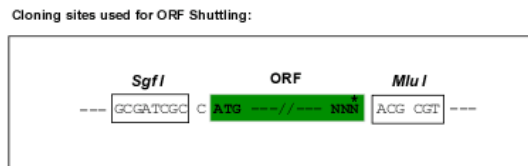
Protein Sequence: >MR202584 representing BC061168
Red=Cloning site Green=Tags(s)

MDTASIYLGKPPRTLGAWHESPPSLPPDACRCPRSHRLALKLSCAGLILLVLTIGMSVLRVLRVQKPS
 REKCCVFIQENLNKTTDCSVNLECPQDWLLHRDKCFHVSQVSNTWEEGQADCGRKGATLLLLIQDQEELRF
 LLDSIKEKYNSFWIGLRF TLPDMNWKWINGTTFNSDVLKITGVTENGSCASILGDKVTPESCASDNRWIC
 QKELNHETPSNDS

TRTRPLEQKLISEEDLAANDILDYKDDDDKV

Restriction Sites: SgfI-MluI

Cloning Scheme:



ACCN: BC061168

ORF Size: 669 bp

OTI Disclaimer: The molecular sequence of this clone aligns with the gene accession number as a point of reference only. However, individual transcript sequences of the same gene can differ through naturally occurring variations (e.g. polymorphisms), each with its own valid existence. This clone is substantially in agreement with the reference, but a complete review of all prevailing variants is recommended prior to use. [More info](#)

OTI Annotation: This clone was engineered to express the complete ORF with an expression tag. Expression varies depending on the nature of the gene.

Components: The ORF clone is ion-exchange column purified and shipped in a 2D barcoded Matrix tube containing 10ug of transfection-ready, dried plasmid DNA (reconstitute with 100 ul of water).

Reconstitution Method:

1. Centrifuge at 5,000xg for 5min.
2. Carefully open the tube and add 100ul of sterile water to dissolve the DNA.
3. Close the tube and incubate for 10 minutes at room temperature.
4. Briefly vortex the tube and then do a quick spin (less than 5000xg) to concentrate the liquid at the bottom.
5. Store the suspended plasmid at -20°C. The DNA is stable for at least one year from date of shipping when stored at -20°C.

RefSeq: [BC061168.1](#)

RefSeq Size: 1056 bp

RefSeq ORF: 671 bp

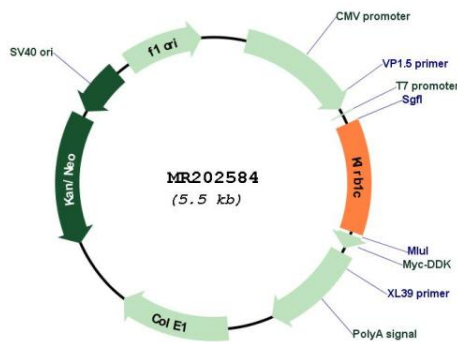
Locus ID: 17059

Cytogenetics: 6 63.09 cM

MW: 38.7 kDa

Gene Summary: Plays a stimulatory role on natural killer (NK) cells cytotoxicity. Activation by cross-linking of the receptor induces Ca(2+) mobilization and interferon-gamma production.
[UniProtKB/Swiss-Prot Function]

Product images:



Circular map for MR202584