

## Product datasheet for MR202581

### Rtp2 (NM\_001008230) Mouse Tagged ORF Clone

#### Product data:

Product Type: Expression Plasmids  
 Product Name: Rtp2 (NM\_001008230) Mouse Tagged ORF Clone  
 Tag: Myc-DDK  
 Symbol: Rtp2  
 Synonyms: Gm605  
 Mammalian Cell Selection: Neomycin  
 Vector: pCMV6-Entry (PS100001)  
 E. coli Selection: Kanamycin (25 ug/mL)  
 ORF Nucleotide Sequence: >MR202581 ORF sequence  
 Red=Cloning site Blue=ORF Green=Tags(s)

TTTTGTAATACGACTCACTATAGGGCGCCGGGAATTCGTCGACTGGATCCGGTACCGAGGAGATCTGCC  
 GCCCGATCGCC

ATGTCCACCAGCCTGACCACTTGTGAGTGAAGAAGGTCTTCTACGAGAAGATGGAGGTGGCCAAGCCAG  
 CGGACAGCTGGGAGCTCATCATAGACCCACCCTCAAGCCCAATGAGCTGGGCCCTGGCTGGAAGCAGTA  
 CCTGGAGCAACATGCCTCAGGCAGGTTCCACTGTTCTGGTGTGGCACACATGGCAATCTGCCAATGTC  
 GTCATTCTTCCACATGCACCTGGACCGTCCCAGCGTGTGGCTCAGTGGCATGCGCGTGTTCAGC  
 AGCTGTGCTATCAGTGGCGCACGTGCGGCTGGACGAGTCCAGCATGCTGGAGGAGAATATCGAGGGCCT  
 GGTGGACAACCTCATCACCAGTCTGCGCGAGCAGTGTACGATGAGGATGGTGGCCAGTACCGCATCCAC  
 GTAGCCAGCCGGCCAGACAGCGATTGCACCGCAGTGAGTTCTGCGAGGCCTGCCAGGAAGGCATCGTGC  
 ACTGGAAGCCCAGCGAAAAGCTGCTGGAGGAGGATGCCGCCTATACCGATGCCTCCAAGAAGAAGGGCCA  
 GGCTGGTTTTATCTCCAGCTTCTTCTCATTTCTGTTGGTGCCTGTTCTGGGGCACCCCTCTGCCTGGTCATT  
 GTCTACCTGCAGTTCTCCGAGGCCGCTCTGGCTTCTT

ACGCGTACGCGGCCGCTCGAGCAGAACTCATCTCAGAAGAGGATCTGGCAGCAATGATATCCTGGATT  
 ACAAGGATGACGACGATAAGGTTTAA



[View online »](#)

**Protein Sequence:** >MR202581 protein sequence  
 Red=Cloning site Green=Tags(s)

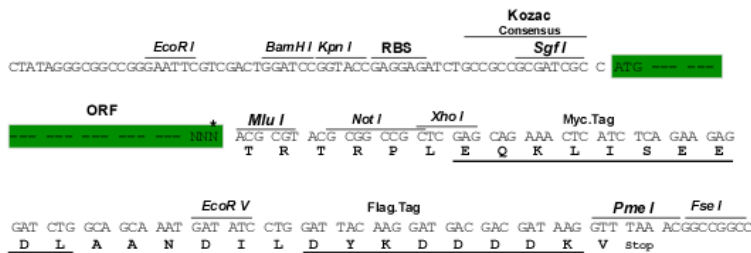
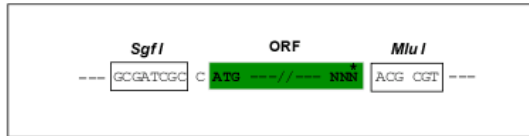
MSTSLTTCWKKVYFEKMEVAKPADSWELIIDPTLKPNELGPGWKQYLEQHASGRFHCSWCWHTWQSANV  
 VILFHMHLDRARVGSVRMRVFKQLCYQCGTSRLDESSMLEENIEGLVDNLIITSLREQCYDEDGGQYRIH  
 VASRPDSGLHRSEFCEACQEGIVHWKPSEKLLLEEDAAYTDASKKKGQAGFISFFSFRWCLFWGTLCLVI  
 VYLQFFRGRSGFL

TRTRPLEQKLISEEDLAANDILDYKDDDDKV

**Restriction Sites:** Sgfl-MluI

**Cloning Scheme:**

Cloning sites used for ORF Shuttling:



\* The last codon before the Stop codon of the ORF

**ACCN:** NM\_001008230

**ORF Size:** 672 bp

**OTI Disclaimer:** The molecular sequence of this clone aligns with the gene accession number as a point of reference only. However, individual transcript sequences of the same gene can differ through naturally occurring variations (e.g. polymorphisms), each with its own valid existence. This clone is substantially in agreement with the reference, but a complete review of all prevailing variants is recommended prior to use. [More info](#)

**OTI Annotation:** This clone was engineered to express the complete ORF with an expression tag. Expression varies depending on the nature of the gene.

**Components:** The ORF clone is ion-exchange column purified and shipped in a 2D barcoded Matrix tube containing 10ug of transfection-ready, dried plasmid DNA (reconstitute with 100 ul of water).

**Reconstitution Method:**

1. Centrifuge at 5,000xg for 5min.
2. Carefully open the tube and add 100ul of sterile water to dissolve the DNA.
3. Close the tube and incubate for 10 minutes at room temperature.
4. Briefly vortex the tube and then do a quick spin (less than 5000xg) to concentrate the liquid at the bottom.
5. Store the suspended plasmid at -20°C. The DNA is stable for at least one year from date of shipping when stored at -20°C.

**RefSeq:** [NM\\_001008230.3](#), [NP\\_001008231.1](#)

**RefSeq Size:** 2428 bp

**RefSeq ORF:** 672 bp

**Locus ID:** 224055

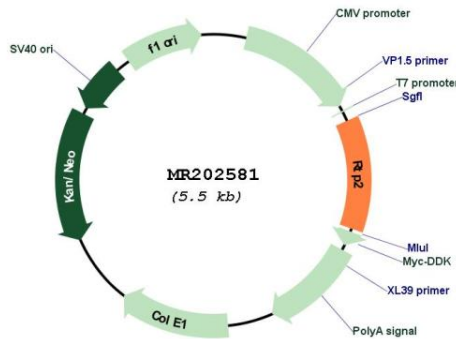
**UniProt ID:** [Q80Z12](#)

**Cytogenetics:** 16 B1

**MW:** 25.9 kDa

**Gene Summary:** Specifically promotes functional cell surface expression of olfactory receptors, but not of other GPCRs.[UniProtKB/Swiss-Prot Function]

**Product images:**



Circular map for MR202581