

Product datasheet for MR202578L3

Ntmt1 (NM_170592) Mouse Tagged Lenti ORF Clone

Product data:

Product Type:	Expression Plasmids
Product Name:	Ntmt1 (NM_170592) Mouse Tagged Lenti ORF Clone
Tag:	Myc-DDK
Symbol:	Ntmt1
Synonyms:	2610205E22Rik; AL033331; AL033332; Mettl11a; NTM1A
Mammalian Cell Selection:	Puromycin
Vector:	pLenti-C-Myc-DDK-P2A-Puro (PS100092)
E. coli Selection:	Chloramphenicol (34 ug/mL)
ORF Nucleotide Sequence:	The ORF insert of this clone is exactly the same as(MR202578).
Restriction Sites:	SgfI-MluI
Cloning Scheme:	

Cloning sites used for ORF Shuttling:



* The last codon before the Stop codon of the ORF.

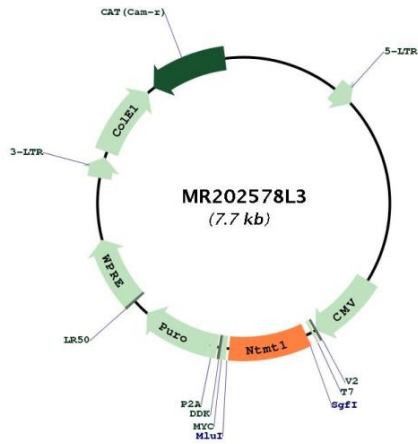
ACCN:	NM_170592
ORF Size:	672 bp



[View online »](#)

OTI Disclaimer:	The molecular sequence of this clone aligns with the gene accession number as a point of reference only. However, individual transcript sequences of the same gene can differ through naturally occurring variations (e.g. polymorphisms), each with its own valid existence. This clone is substantially in agreement with the reference, but a complete review of all prevailing variants is recommended prior to use. More info
OTI Annotation:	This clone was engineered to express the complete ORF with an expression tag. Expression varies depending on the nature of the gene.
Components:	The ORF clone is ion-exchange column purified and shipped in a 2D barcoded Matrix tube containing 10ug of transfection-ready, dried plasmid DNA (reconstitute with 100 ul of water).
Reconstitution Method:	<ol style="list-style-type: none"> 1. Centrifuge at 5,000xg for 5min. 2. Carefully open the tube and add 100ul of sterile water to dissolve the DNA. 3. Close the tube and incubate for 10 minutes at room temperature. 4. Briefly vortex the tube and then do a quick spin (less than 5000xg) to concentrate the liquid at the bottom. 5. Store the suspended plasmid at -20°C. The DNA is stable for at least one year from date of shipping when stored at -20°C.
RefSeq:	NM_170592.2
RefSeq Size:	1217 bp
RefSeq ORF:	672 bp
Locus ID:	66617
UniProt ID:	Q8R2U4
Cytogenetics:	2 B
Gene Summary:	Distributive alpha-N-methyltransferase that methylates the N-terminus of target proteins containing the N-terminal motif [Ala/Gly/Pro/Ser]-Pro-Lys when the initiator Met is cleaved. Specifically catalyzes mono-, di- or tri-methylation of the exposed alpha-amino group of the Ala, Gly or Ser residue in the [Ala/Gly/Ser]-Pro-Lys motif and mono- or di-methylation of Pro in the Pro-Pro-Lys motif (PubMed:20668449). Some of the substrates may be primed by METTL11B-mediated monomethylation. Catalyzes the trimethylation of the N-terminal Gly in CENPA (after removal of Met-1) (By similarity). Responsible for the N-terminal methylation of KLHL31, MYL2, MYL3, RB1, RCC1, RPL23A and SET. Required during mitosis for normal bipolar spindle formation and chromosome segregation via its action on RCC1 (PubMed:20668449). [UniProtKB/Swiss-Prot Function]

Product images:



Circular map for MR202578L3