

Product datasheet for MR202568

Sod2 (NM_013671) Mouse Tagged ORF Clone

Product data:

Product Type:	Expression Plasmids
Product Name:	Sod2 (NM_013671) Mouse Tagged ORF Clone
Tag:	Myc-DDK
Symbol:	Sod2
Synonyms:	MnSOD; Sod-2
Vector:	pCMV6-Entry (PS100001)
E. coli Selection:	Kanamycin (25 ug/mL)
Cell Selection:	Neomycin
ORF Nucleotide Sequence:	>MR202568 ORF sequence Red=Cloning site Blue=ORF Green=Tags(s)

TTTTGTAATACGACTCACTATAGGGCGGCCGGGAATTCGTCGACTGGATCCGGTACCGAGGAGATCTGCC
GCC**GCGATCGCC**

ATGTTGTGTCGGGCGGCGTGCAGCACGGGCAGGAGGCTGGGCCCTGTGGCCGGTGCCGCGGGCTCCCGGC
ACAAGCACAGCCTCCCAGACCTGCCTTACGACTATGGCGCGCTGGAGCCACACATTAACGCGCAGATCAT
GCAGCTGCACCACAGCAAGCACCACGGCCTACGTGAACAATCTCAACGCCACCGAGGAGAAGTACCAC
GAGGCTCTGGCCAAGGGAGATGTTACAACCTCAGGTCGCTCTTCAGCCTGCACTGAAGTTCATGGTGGGG
GACATATTAATCACACCATTTTCTGGACAAACCTGAGCCCTAAGGGTGGTGGAGAACCCAAAGGAGAGTT
GCTGGAGGCTATCAAGCGTGACTTTGGGTCTTTTGAAGTTTAAAGGAGAAGCTGACAGCCGTGTCTGTG
GGAGTCCAAGGTTCAAGGCTGGGGCTGGCTTGGCTTCAATAAGGAGCAAGGTCGCTTACAGATTGCTGCCT
GCTCTAATCAGGACCCATTGCAAGGAACAACAGGCCTTATTCGCTGCTGGGGATTGACGTGTGGGAGCA
CGCTTACTACCTTCAGTATAAAAACGTCAGACCTGACTATCTGAAAGCTATTTGGAATGTAATCAACTGG
GAGAATGTTACTGAAAGATACACAGCTTGCAAGAAG

ACGCGTACGCGCGCGCTCGAGCAGAACTCATCTCAGAAGAGGATCTGGCAGCAAATGATATCCTGGATT
ACAAGGATGACGACGATAAGGTTTAA



[View online »](#)

Protein Sequence: >MR202568 protein sequence
 Red=Cloning site Green=Tags(s)

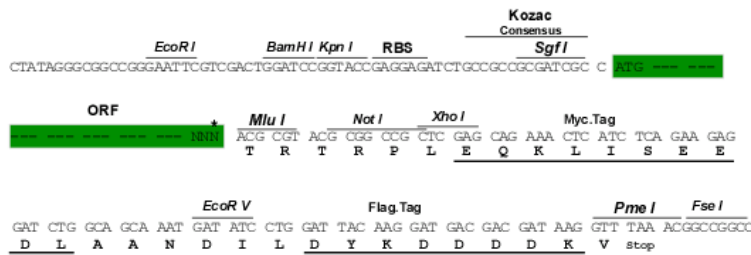
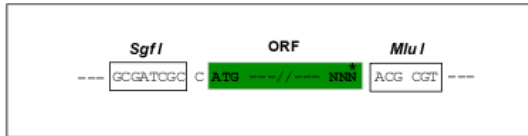
MLCRAACSTGRRLGPVAGAAGSRHKHSLPDLPYDYGALEPHINAQIMQLHHSKHHAAVNNLNATEEKYH
 EALAKGDVTTQVALQPALKFNGGGHINHITIFWTNLSKGGGEPKGELLEAIKRDFGSFEKFKELTAVSV
 GVQSGWGWLGFNKEQGRLQIAACSNQDPLQGTGLIPLLIDVWEHAYYLQYKNVSRPDYKAIWNVINW
 ENVTERYTACKK

TRTRPLEQKLISEEDLAANDILDYKDDDDKV

Restriction Sites: SgfI-MluI

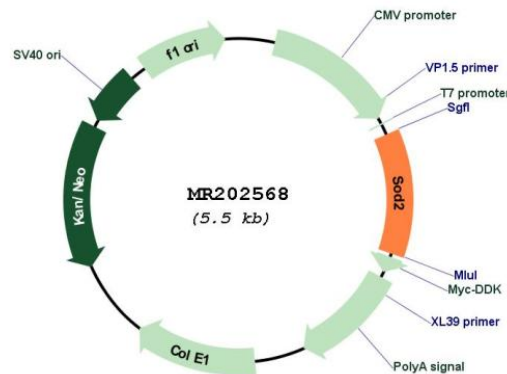
Cloning Scheme:

Cloning sites used for ORF Shuttling:



* The last codon before the Stop codon of the ORF

Plasmid Map:



ACCN: NM_013671

ORF Size: 669 bp

OTI Disclaimer: Due to the inherent nature of this plasmid, standard methods to replicate additional amounts of DNA in E. coli are highly likely to result in mutations and/or rearrangements. Therefore, OriGene does not guarantee the capability to replicate this plasmid DNA. Additional amounts of DNA can be purchased from OriGene with batch-specific, full-sequence verification at a reduced cost. Please contact our customer care team at custsupport@origene.com or by calling 301.340.3188 option 3 for pricing and delivery.

The molecular sequence of this clone aligns with the gene accession number as a point of reference only. However, individual transcript sequences of the same gene can differ through naturally occurring variations (e.g. polymorphisms), each with its own valid existence. This clone is substantially in agreement with the reference, but a complete review of all prevailing variants is recommended prior to use. [More info](#)

OTI Annotation: This clone was engineered to express the complete ORF with an expression tag. Expression varies depending on the nature of the gene.

RefSeq: [NM_013671.3](#), [NP_038699.2](#)

RefSeq Size: 3824 bp

RefSeq ORF: 669 bp

Locus ID: 20656

MW: 24.6 kDa

Gene Summary: Destroys superoxide anion radicals which are normally produced within the cells and which are toxic to biological systems. [UniProtKB/Swiss-Prot Function]