

Product datasheet for MR202547

Tmed3 (NM_025360) Mouse Tagged ORF Clone

Product data:

Product Type:	Expression Plasmids
Product Name:	Tmed3 (NM_025360) Mouse Tagged ORF Clone
Tag:	Myc-DDK
Symbol:	Tmed3
Synonyms:	1200002G13Rik; AW546672; P24b
Mammalian Cell Selection:	Neomycin
Vector:	pCMV6-Entry (PS100001)
E. coli Selection:	Kanamycin (25 ug/mL)
ORF Nucleotide Sequence:	>MR202547 ORF sequence Red=Cloning site Blue=ORF Green=Tags(s)

TTTTGTAATACGACTCACTATAGGGCGCCGGGAATTCGTCGACTGGATCCGGTACCGAGGAGATCTGCC
GCC**CGATCGCC**

ATGGTCCACGAGGCTCCGCACGCTTCATCCTTCCAGATGCTGCTACAGCTGCTGCTTCTGCTCCTGCTCC
GGGCCGAGCCACTGCGGAGCGCTGAGCTCACCTTCGAGCTGCCGACAACGCCAAGCAGTGCTTCCACGA
AGAGGTGGAGCAGGGCGTGAAGTTCTCTGGATTACCAGTTATCACTGGAGGCCACTACGATGTGGAC
TGCTATGTGGAAGACCCAGGGCAACGTCATCTACAGGGAGACCAAGAAGCAGTATGACAGCTTACGT
ACAAGACAGAGGCCAAGGGCGTCTACCGGTTTTGCTTCAGTAATGAGTTCTCCACCTTCTCTATAAGAC
CGTCTACTTTGACTTCCAAGTGGGTGACGAGCCCCCATTCTCCCAGACATGGGGAACAGGGTACGGCT
CTCACTCAGATGGAATCTGCCTGTGTAACATTTACGAGGCTCTGAAGACTGTGATCGACTCCCAGACAC
ACTATCGACTGCGGGAGGCTCAGGACCGAGCCCGAGCTGAAGACCTTAATAGTCGAGTGTCTACTGGTC
TGTAGGCGAGACTATTGCCCTGTTGTGGTCAGCTTCAGCCAGGTGCTACTGCTGAAAAGCTTCTTTACA
GAAAAGCGACCTGTTAACAGAGCGGTCCACTCC

ACGCGTACGCGGGCCGCTCGAGCAGAACTCATCTCAGAAGAGGATCTGGCAGCAAATGATATCCTGGATT
ACAAGGATGACGACGATAAGGTTTAA



[View online »](#)

Protein Sequence: >MR202547 protein sequence
 Red=Cloning site Green=Tags(s)

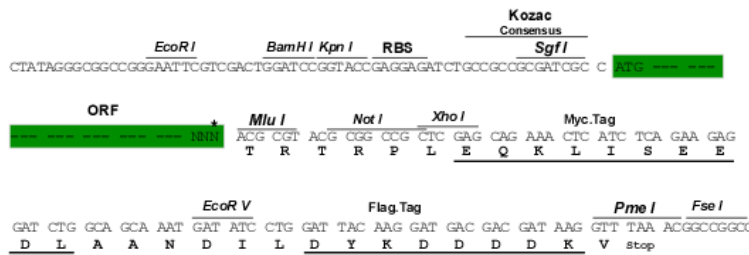
MVHEAPHASSFQMLLQLLLLLLLRAEPLRSAELTFELPDNAKQCFHEEVEQGVKFSLDYQVITGGHYDVD
 CYVEDPRGNVIYRETKKQYDSFTYKTEAKGVYRFCFSNEFSTFSHKTVYFDFQVGDPEPILPDMGNRVTA
 LTQMESACVTIHEALKTVIDSQTHYRLREAQDRARAEDLNSRVSYWSVGETIALFVVSFSQVLLKSF
 EKRPVNRVAVHS

TRTRPLEQKLISEEDLAANDILDYKDDDDKV

Restriction Sites: SgfI-MluI

Cloning Scheme:

Cloning sites used for ORF Shuttling:



* The last codon before the Stop codon of the ORF

ACCN: NM_025360

ORF Size: 666 bp

OTI Disclaimer: The molecular sequence of this clone aligns with the gene accession number as a point of reference only. However, individual transcript sequences of the same gene can differ through naturally occurring variations (e.g. polymorphisms), each with its own valid existence. This clone is substantially in agreement with the reference, but a complete review of all prevailing variants is recommended prior to use. [More info](#)

OTI Annotation: This clone was engineered to express the complete ORF with an expression tag. Expression varies depending on the nature of the gene.

Components: The ORF clone is ion-exchange column purified and shipped in a 2D barcoded Matrix tube containing 10ug of transfection-ready, dried plasmid DNA (reconstitute with 100 ul of water).

Reconstitution Method:

1. Centrifuge at 5,000xg for 5min.
2. Carefully open the tube and add 100ul of sterile water to dissolve the DNA.
3. Close the tube and incubate for 10 minutes at room temperature.
4. Briefly vortex the tube and then do a quick spin (less than 5000xg) to concentrate the liquid at the bottom.
5. Store the suspended plasmid at -20°C. The DNA is stable for at least one year from date of shipping when stored at -20°C.

RefSeq: [NM_025360.2](#)

RefSeq Size: 1324 bp

RefSeq ORF: 666 bp

Locus ID: 66111

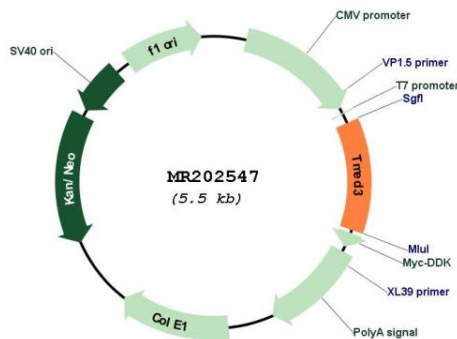
UniProt ID: [Q78IS1](#)

Cytogenetics: 9 E3.1

MW: 25.5 kDa

Gene Summary: Potential role in vesicular protein trafficking, mainly in the early secretory pathway. Contributes to the coupled localization of TMED2 and TMED10 in the cis-Golgi network (By similarity).[UniProtKB/Swiss-Prot Function]

Product images:



Circular map for MR202547