

Product datasheet for MR202537L3

Fam60a (NM_019643) Mouse Tagged Lenti ORF Clone

Product data:

Product Type:	Expression Plasmids
Product Name:	Fam60a (NM_019643) Mouse Tagged Lenti ORF Clone
Tag:	Myc-DDK
Symbol:	Fam60a
Synonyms:	Ppcs1; Pptcs1; Tera
Mammalian Cell Selection:	Puromycin
Vector:	pLenti-C-Myc-DDK-P2A-Puro (PS100092)
E. coli Selection:	Chloramphenicol (34 ug/mL)
ORF Nucleotide Sequence:	The ORF insert of this clone is exactly the same as(MR202537).
Restriction Sites:	SgfI-MluI
Cloning Scheme:	

Cloning sites used for ORF Shuttling:



* The last codon before the Stop codon of the ORF.

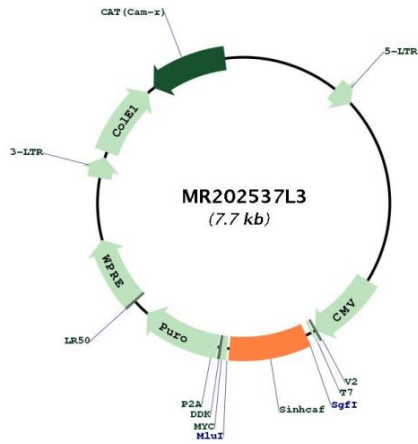
ACCN:	NM_019643
ORF Size:	666 bp



[View online »](#)

OTI Disclaimer:	The molecular sequence of this clone aligns with the gene accession number as a point of reference only. However, individual transcript sequences of the same gene can differ through naturally occurring variations (e.g. polymorphisms), each with its own valid existence. This clone is substantially in agreement with the reference, but a complete review of all prevailing variants is recommended prior to use. More info
OTI Annotation:	This clone was engineered to express the complete ORF with an expression tag. Expression varies depending on the nature of the gene.
Components:	The ORF clone is ion-exchange column purified and shipped in a 2D barcoded Matrix tube containing 10ug of transfection-ready, dried plasmid DNA (reconstitute with 100 ul of water).
Reconstitution Method:	<ol style="list-style-type: none">1. Centrifuge at 5,000xg for 5min.2. Carefully open the tube and add 100ul of sterile water to dissolve the DNA.3. Close the tube and incubate for 10 minutes at room temperature.4. Briefly vortex the tube and then do a quick spin (less than 5000xg) to concentrate the liquid at the bottom.5. Store the suspended plasmid at -20°C. The DNA is stable for at least one year from date of shipping when stored at -20°C.
RefSeq:	NM_019643.3
RefSeq Size:	2640 bp
RefSeq ORF:	666 bp
Locus ID:	56306
UniProt ID:	Q8C8M1
Cytogenetics:	6 G3
Gene Summary:	Subunit of the Sin3 deacetylase complex (Sin3/HDAC), this subunit is important for the repression of genes encoding components of the TGF-beta signaling pathway (By similarity). Core component of a SIN3A complex (composed of at least SINHCAF, SIN3A, HDAC1, SAP30, RBBP4, OGT and TET1) present in embryonic stem (ES) cells. Promotes the stability of SIN3A and its presence on chromatin and is essential for maintaining the potential of ES cells to proliferate rapidly, while ensuring a short G1-phase of the cell cycle, thereby preventing premature lineage priming (PubMed:28554894).[UniProtKB/Swiss-Prot Function]

Product images:



Circular map for MR202537L3