

Product datasheet for **MR202502**

Creg1 (NM_011804) Mouse Tagged ORF Clone

Product data:

| | |
|---------------------------|---|
| Product Type: | Expression Plasmids |
| Product Name: | Creg1 (NM_011804) Mouse Tagged ORF Clone |
| Tag: | Myc-DDK |
| Symbol: | Creg1 |
| Synonyms: | AA755314; Creg |
| Mammalian Cell Selection: | Neomycin |
| Vector: | pCMV6-Entry (PS100001) |
| E. coli Selection: | Kanamycin (25 ug/mL) |
| ORF Nucleotide Sequence: | >MR202502 ORF sequence Red=Cloning site Blue=ORF Green=Tags(s) |

TTTTGTAATACGACTCACTATAGGGCGGCCGGAATTCGTCGACTGGATCCGGTACCGAGGAGATCTGCC
GCC**CGATCGCC**

ATGGCTGCCCGTGCTCCTGAGCTCGCGGTTCCCTGCTTGCTGCCCTTCTGGCGCCCGCTGGTGGCAC
TACTGGTGTGCGCCGGCTCGGGTCGCGGAGGCCGGGACCACGGGACTGGGACGTGGACAGGCGATTGCC
TCCGCTGCCACCCCGGAAGACGGGCCGCGTGGCCGCTTCGTGACTCAGTCTCAGACTGGGGCTCG
CTGGCCACTATCTCCACAATAAAGGAGGTGCGCGGCTGGCCCTTCGCGGACATCATCTCAATCAGTGACG
GTCTCCGGGAGAAGGCACGGGCGAGCCCTACATGTACCTGAGTCCACTGCAGCAAGCCGTGAGCGACCT
GCAGGAAAATCCAGAGGCTACGCTGACTATGTCTTTAGCACAGACTGTCTACTGTAGGAATCATGGATT
GATCCCCAGAGTCCCCTGTGTTCATATAATGATGTGCGGAACTGTGACCAAGGTGAACAAGACAGAAG
AGGACTATGCAAGGGATTCGCTGTTTGTTCGACACCCTGAGATGAAGCACTGGCCTTCCAGCCATAACTG
GTTCTTTGCTAAATTAATAAAGCCGTATCTGGGTCTTGGACTACTTTGGTGGACCTAAAGTAGTGACA
CCTGAAGAATATTTAACGTCACGCTGCAG

ACGCGTACGCGGCGCTCGAGCAGAACTCATCTCAGAAGAGGATCTGGCAGCAATGATATCCTGGATT
ACAAGGATGACGACGATAAGGTTTAA



Protein Sequence: >MR202502 protein sequence
 Red=Cloning site Green=Tags(s)

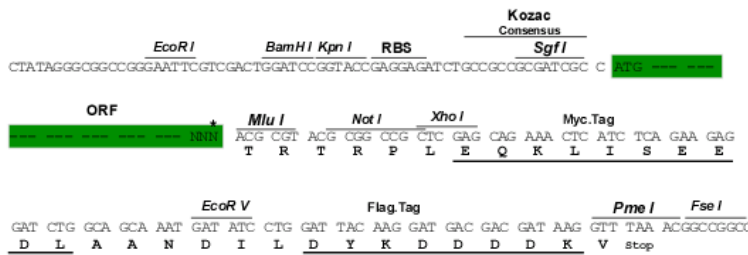
MAARAPELARSLLAALLAPALVALLVSPASGRGGRDHGDWVDRRLPPLPPREDGPRVARFVTHVSDWGS
 LATISTIKEVRGWPFADIIISISDGGPPGEGTGEPYMYLSPLQQAVSDLQENPEATLTMSLAQTVYCRNHGF
 DPQSPLCVHIMMSGTVTKVNKTEEDYARDSLFVRHPEMKHWSSHNWFFAKLKISRIVWLDYFGGPKVVT
 PEEYFNVTLQ

TRTRPLEQKLISEEDLAANDILDYKDDDDKV

Restriction Sites: SgfI-MluI

Cloning Scheme:

Cloning sites used for ORF Shuttling:



* The last codon before the Stop codon of the ORF

ACCN: NM_011804

ORF Size: 663 bp

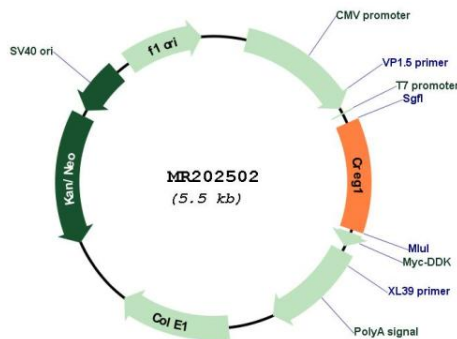
OTI Disclaimer: Due to the inherent nature of this plasmid, standard methods to replicate additional amounts of DNA in E. coli are highly likely to result in mutations and/or rearrangements. Therefore, OriGene does not guarantee the capability to replicate this plasmid DNA. Additional amounts of DNA can be purchased from OriGene with batch-specific, full-sequence verification at a reduced cost. Please contact our customer care team at custsupport@origene.com or by calling 301.340.3188 option 3 for pricing and delivery.

The molecular sequence of this clone aligns with the gene accession number as a point of reference only. However, individual transcript sequences of the same gene can differ through naturally occurring variations (e.g. polymorphisms), each with its own valid existence. This clone is substantially in agreement with the reference, but a complete review of all prevailing variants is recommended prior to use. [More info](#)

OTI Annotation: This clone was engineered to express the complete ORF with an expression tag. Expression varies depending on the nature of the gene.

- Components:** The ORF clone is ion-exchange column purified and shipped in a 2D barcoded Matrix tube containing 10ug of transfection-ready, dried plasmid DNA (reconstitute with 100 ul of water).
- Reconstitution Method:**
1. Centrifuge at 5,000xg for 5min.
 2. Carefully open the tube and add 100ul of sterile water to dissolve the DNA.
 3. Close the tube and incubate for 10 minutes at room temperature.
 4. Briefly vortex the tube and then do a quick spin (less than 5000xg) to concentrate the liquid at the bottom.
 5. Store the suspended plasmid at -20°C. The DNA is stable for at least one year from date of shipping when stored at -20°C.
- RefSeq:** [NM_011804.3](#)
- RefSeq Size:** 2138 bp
- RefSeq ORF:** 663 bp
- Locus ID:** 433375
- UniProt ID:** [O88668](#)
- Cytogenetics:** 1 H2.3
- MW:** 24.5 kDa
- Gene Summary:** May contribute to the transcriptional control of cell growth and differentiation. Antagonizes transcriptional activation and cellular transformation by the adenovirus E1A protein. The transcriptional control activity of cell growth requires interaction with IGF2R (By similarity). [UniProtKB/Swiss-Prot Function]

Product images:



Circular map for MR202502