

Product datasheet for MR202478

Rpain (NM_027186) Mouse Tagged ORF Clone

Product data:

Product Type:	Expression Plasmids
Product Name:	Rpain (NM_027186) Mouse Tagged ORF Clone
Tag:	Myc-DDK
Symbol:	Rpain
Synonyms:	2400006N03Rik; Rip
Vector:	pCMV6-Entry (PS100001)
E. coli Selection:	Kanamycin (25 ug/mL)
Cell Selection:	Neomycin
ORF Nucleotide Sequence:	>MR202478 ORF sequence Red=Cloning site Blue=ORF Green=Tags(s)

TTTTGTAATACGACTCACTATAGGGCGGCCGGAATTCGTCGACTGGATCCGGTACCGAGGAGATCTGCC
GCC**CGGATCGCC**

ATGGCAGAGTCCTCGGGTCTCCGCACCGCTTGTGTACAAGCAGGTGGGCTCGCCCCACTGAAAGAAA
CTTTCAGGCAGGGATGTCTGGAGAGAATGAGAAACAGCAGGCACAGGCTCCTGAACAAATATCGCCAGGC
TGCAGGTAGCACGCCGGGACAGCCTCAGACAGACTTCTTGTGCAAGAAGTAATGGAGGAAGAGTGGGCT
TCTTTGCAGTCTGTGGAGAATTGTCGGAGGCCTTGCTTCAGTTGGAATTGCCACTGGACCTAGCTGTGC
TGCAGGACATCGAGCAGGAGCTGTGTAATGAAGAAAAGTCCATCATAAGTGAGTACGAAGAGGACTTAGA
GTTTGATGAAAGTTGTCTCAGGAGAATGTTGGCTGAGTGGGAAGCAAACCTCCCTCATCTGTCTGTGTGT
ATAAAGTACAACCTGAGAATAATGAACAGTGTGGTCACGTGTCCATGTGGCCTGCACATCCCTGTTCACT
CAACAGACCTGACAGAGCAGAAGCTTCGAGCCTGTTTGGAAAGAAAATGTGAATGAGCACAGTGTACACTG
TCCCCACCCCTGTGTTCTCAGTCACCGGTGGAACAGAAGAGAAGCCAGTCTTCTGATGAACTGCCTG
ACTTGTGACACCTGGGCTGTGATCCTC

ACGCGTACGCGGCCGCTCGAGCAGAACTCATCTCAGAAGAGGATCTGGCAGCAAATGATATCCTGGATT
ACAAGGATGACGACGATAAGGTTTAA



[View online »](#)

Protein Sequence: >MR202478 protein sequence
 Red=Cloning site Green=Tags(s)

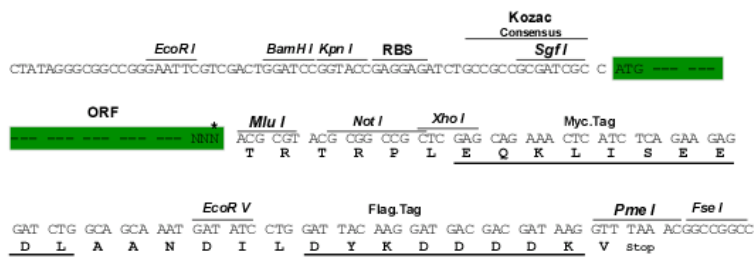
MAESSGSPHRLLYKQVGSPhWKETFRQGCLEMRNSRHRLLNKYRQAAGSTPGTASDRLLVQEVMEEEWA
 SLQSVENCPEALLQLEPLDLAVLQDIEQELCNEEKSIISEYEEDLEFDESCLRRMLAEWEANSLICPVC
 IKYNLRIMNSVVTCPGLHIPVHSTDLTEQKLRACLEENVNEHSVHCPTPVF SVTGGTEEKPSLLMNC
 L TCDTWAVIL

TRTRPLEQKLISEEDLAANDILDYKDDDDKV

Restriction Sites: Sgfl-MluI

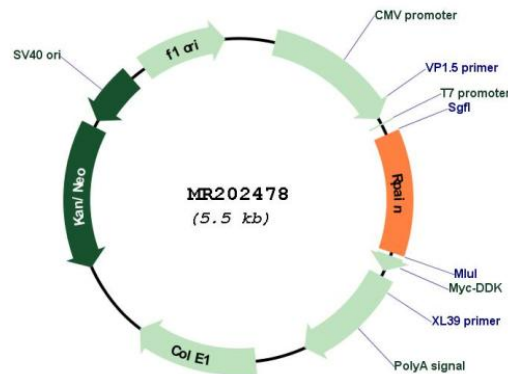
Cloning Scheme:

Cloning sites used for ORF Shuttling:



* The last codon before the Stop codon of the ORF

Plasmid Map:



ACCN: NM_027186

ORF Size: 660 bp

OTI Disclaimer:	The molecular sequence of this clone aligns with the gene accession number as a point of reference only. However, individual transcript sequences of the same gene can differ through naturally occurring variations (e.g. polymorphisms), each with its own valid existence. This clone is substantially in agreement with the reference, but a complete review of all prevailing variants is recommended prior to use. More info
OTI Annotation:	This clone was engineered to express the complete ORF with an expression tag. Expression varies depending on the nature of the gene.
Components:	The ORF clone is ion-exchange column purified and shipped in a 2D barcoded Matrix tube containing 10ug of transfection-ready, dried plasmid DNA (reconstitute with 100 ul of water).
Reconstitution Method:	<ol style="list-style-type: none">1. Centrifuge at 5,000xg for 5min.2. Carefully open the tube and add 100ul of sterile water to dissolve the DNA.3. Close the tube and incubate for 10 minutes at room temperature.4. Briefly vortex the tube and then do a quick spin (less than 5000xg) to concentrate the liquid at the bottom.5. Store the suspended plasmid at -20°C. The DNA is stable for at least one year from date of shipping when stored at -20°C.
RefSeq:	NM_027186.1 , NP_081462.1
RefSeq Size:	1213 bp
RefSeq ORF:	660 bp
Locus ID:	69723
UniProt ID:	Q9CWY9
Cytogenetics:	11 B4
MW:	24.9 kDa
Gene Summary:	Mediates the import of RPA complex into the nucleus, possibly via some interaction with importin beta. Sumoylation mediates the localization of RPA complex into the PML body of the nucleus, thereby participating in RPA function in DNA metabolism (By similarity). [UniProtKB/Swiss-Prot Function]