

Product datasheet for **MR202465**

Mrps34 (NM_023260) Mouse Tagged ORF Clone

Product data:

Product Type: Expression Plasmids
Product Name: Mrps34 (NM_023260) Mouse Tagged ORF Clone
Tag: Myc-DDK
Symbol: Mrps34
Synonyms: 0610007F04Rik; 5330430D13Rik; AV001970; Tce2
Mammalian Cell Selection: Neomycin
Vector: pCMV6-Entry (PS100001)
E. coli Selection: Kanamycin (25 ug/mL)
ORF Nucleotide Sequence: >MR202465 ORF sequence
 Red=Cloning site Blue=ORF Green=Tags(s)

TTTTGTAATACGACTCACTATAGGGCGCCGGGAATTCGTCGACTGGATCCGGTACCGAGGAGATCTGCC
 GCC**CGATCGCC**

ATGGCGCGGAAGAAAGTAAAGACCCCGGCTGATCGCTGAGCTGGCTCGCCGCTGCGCGCCTTGCGCGAGC
 AGCGGAACCAGCCGCGAGATTCTCAGCTCTACGCCCTAGACTACGAGACGCTGACCCGGCCGCACTCCGG
 TCGCCGGCTGCCGGTACGCGCCTGGGCCGACGTGCGTCGCGAGAGCCGCCTCTACAGCTGCTCGCCCGC
 CTCCCCTTGTTTCGGCCTGGGCCGTCTGGTTACCCGCAAGTCTGGCTGTGGCAGCAGCAGAGCCATGCT
 ACTGGCGCCTCACGCGTGTGAGGCCGACTACACGGCGCAGAATTGGACCACGGGAGGGCCTGGGGCAT
 CCTGACTTTCAAAGGGAAGAGTGAGGATACGGCTCGGGAAATCGAGCAAGTCATGTACCAGATTGGCGT
 TTGGTACCCAAGCACGAGGAGGAGGCCCTTCACTGCGTTCACTGCGAAACCAGAGGACAGATTGAATTCTG
 TCCCCTATCCACCTCTGCTGCGAGCCATGATCCTCGCTGAACGGCAGAAAAACGGGGATACCAGCGTGCA
 GGAGCCGCTCCTGAACCTGGAGAGGACTCGAATGCGCCCTGGGACTACCCTGCAAAACAGGAGACGAAA
 GGGAGGGCCAAGGGCACCCAGTC

AG**CGGACCC**ACGCGTACGCGGCCGCTCGAGCAGAAACTCATCTCAGAAGAGGATCTGGCAGCAAATGATATCC
 TGGATTACAAGGATGACGACGATAAGGTTTAA



[View online »](#)

Protein Sequence: >MR202465 protein sequence
Red=Cloning site Green=Tags(s)

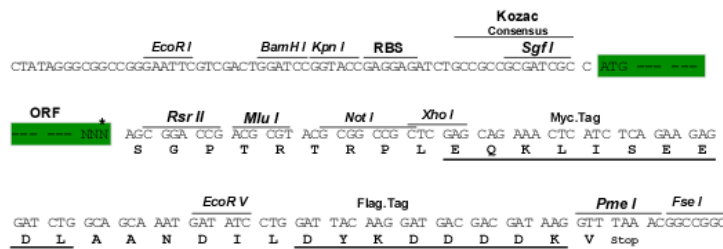
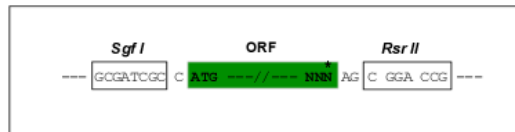
MARKKVRPRLIAELARRVRALREQRNQPRDSQLYALDYETLTRPHSGRRLPVRWADVRRESRLQLLAR
 LPLFGLGRLVTRKSWLWQHDEPCYWRLTRVRPDYTAQNLDHGRAWGILTFKKGSEDTAREIEQVMYHDWR
 LVPKHEEEAFTAFTAKPEDRLNSVPYPPLLRAMILAERQKNGDTSVQEPLLNLERTRMRPWDYPAKQETK
 GRAKGTPV

SGPTRTRPLEQKLI SEEDLAANDILDYKDDDDKV

Restriction Sites: SgfI-RsrII

Cloning Scheme:

Cloning sites used for ORF Shuttling:



* The last codon before the Stop codon of the ORF

ACCN: NM_023260

ORF Size: 657 bp

OTI Disclaimer: The molecular sequence of this clone aligns with the gene accession number as a point of reference only. However, individual transcript sequences of the same gene can differ through naturally occurring variations (e.g. polymorphisms), each with its own valid existence. This clone is substantially in agreement with the reference, but a complete review of all prevailing variants is recommended prior to use. [More info](#)

OTI Annotation: This clone was engineered to express the complete ORF with an expression tag. Expression varies depending on the nature of the gene.

Components: The ORF clone is ion-exchange column purified and shipped in a 2D barcoded Matrix tube containing 10ug of transfection-ready, dried plasmid DNA (reconstitute with 100 ul of water).

Reconstitution Method:

1. Centrifuge at 5,000xg for 5min.
2. Carefully open the tube and add 100ul of sterile water to dissolve the DNA.
3. Close the tube and incubate for 10 minutes at room temperature.
4. Briefly vortex the tube and then do a quick spin (less than 5000xg) to concentrate the liquid at the bottom.
5. Store the suspended plasmid at -20°C. The DNA is stable for at least one year from date of shipping when stored at -20°C.

RefSeq: [NM_023260.1](#), [NP_075749.1](#)

RefSeq Size: 899 bp

RefSeq ORF: 657 bp

Locus ID: 79044

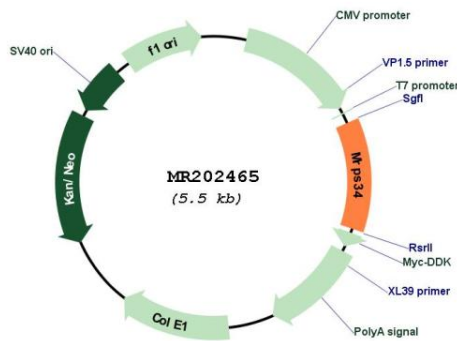
UniProt ID: [Q9JIK9](#)

Cytogenetics: 17 A3.3

MW: 25.8 kDa

Gene Summary: Required for mitochondrial translation, plays a role in maintaining the stability of the small ribosomal subunit and the 12S rRNA that are required for mitoribosome formation. [UniProtKB/Swiss-Prot Function]

Product images:



Circular map for MR202465