

Product datasheet for MR202416

Gid4 (NM_025757) Mouse Tagged ORF Clone

Product data:

Product Type:	Expression Plasmids
Product Name:	Gid4 (NM_025757) Mouse Tagged ORF Clone
Tag:	Myc-DDK
Symbol:	Gid4
Synonyms:	4933439F18Rik
Mammalian Cell Selection:	Neomycin
Vector:	pCMV6-Entry (PS100001)
E. coli Selection:	Kanamycin (25 ug/mL)
ORF Nucleotide Sequence:	>MR202416 ORF sequence Red=Cloning site Blue=ORF Green=Tags(s)

TTTTGTAATACGACTCACTATAGGGCGGCCGGAATTCGTCGACTGGATCCGGTACCGAGGAGATCTGCC
GCC**CGATCGCC**

ATGCCGGTCCGCACCGAGTGTCCCCGCCGGGGTGCCTCAACCACATCCGCGGCCTCACTCATCCCGC
CGCCGCCATCAACACCCAGCAGCCCGCGTGGCCACCAGCTTGCTCTACAGCGGCTCAAGTCCGTGG
CCACCAGAAGAGCAAGGGGAACCTGACGACGTAGAGGTGGTGTGCAGCACGTGGACACTGGGAACCT
TACCTTTGTGGTACCTAAAGATTAAGGCCTTACAGAGGAATATCCAACCTTACAACCTTCTTTGAAG
GAGAAATAATAAGCAAAAAACACCTTTCTTAACCTCGAAAGTGGGACGCAGATGAAGACGTGGATCGGAA
ACACTGGGCAAGTTTCTGGCTTTTATCAGTATGCAGAATCATTTAATTCAGACGACTTTGATTATGAA
GAACTGAAAAATGGGATTATGTCTTCATGAGGTGGAAGGAGCAGTTCCTAGTCCCGGACCACACAATCA
AAGACATCAGCGGTGCTTCTTTGCTGGTTTCTATTACATCTGCTTTCAGAAAGTCAGCAGCTCCATAGA
GGGCTACTACTACCATCGGAGCTCAGAATGGTATCAGTCCCTCAACCTGACCCATGTTTCTGAACACAGT
GCACCCATCTATGAGTCCGG

ACGCGTACGCGGCCGCTCGAGCAGAAACTCATCTCAGAAGAGGATCTGGCAGCAAATGATATCTGGATT
ACAAGGATGACGACGATAAGGTTTAA



[View online »](#)

Protein Sequence: >MR202416 protein sequence
 Red=Cloning site Green=Tags(s)

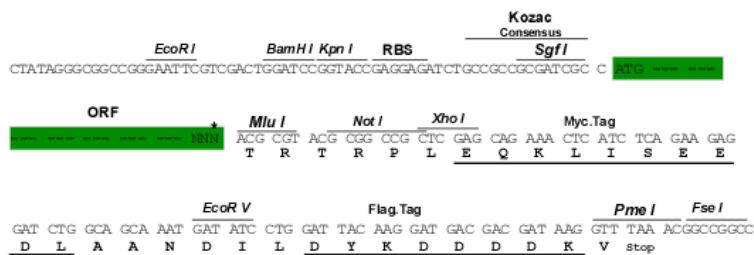
MPVRTECPPPAGASTTSAASLIPPPPINTQQPGVATSLLYSGSKFRGHQKSKGNSYDVEVLQHVDTGNS
 YLCGYLKIKGLTEEYPTLTTFFEGEIIISKKHPFLTRKWDADDEDVDRKHGKFLAFYQYAESFNSSDDFDYE
 ELKNGDYVFMRWKEQFLVPDHTIKDISGASFAFYIICFQKSAASIEGYYYHRSSEWYQSLNLTHVPEHS
 APIYEFR

TRTRPLEQKLISEEDLAANDILDYKDDDDKV

Restriction Sites: SgfI-MluI

Cloning Scheme:

Cloning sites used for ORF Shuttling:



* The last codon before the Stop codon of the ORF

ACCN: NM_025757

ORF Size: 654 bp

OTI Disclaimer: The molecular sequence of this clone aligns with the gene accession number as a point of reference only. However, individual transcript sequences of the same gene can differ through naturally occurring variations (e.g. polymorphisms), each with its own valid existence. This clone is substantially in agreement with the reference, but a complete review of all prevailing variants is recommended prior to use. [More info](#)

OTI Annotation: This clone was engineered to express the complete ORF with an expression tag. Expression varies depending on the nature of the gene.

Components: The ORF clone is ion-exchange column purified and shipped in a 2D barcoded Matrix tube containing 10ug of transfection-ready, dried plasmid DNA (reconstitute with 100 ul of water).

Reconstitution Method:

1. Centrifuge at 5,000xg for 5min.
2. Carefully open the tube and add 100ul of sterile water to dissolve the DNA.
3. Close the tube and incubate for 10 minutes at room temperature.
4. Briefly vortex the tube and then do a quick spin (less than 5000xg) to concentrate the liquid at the bottom.
5. Store the suspended plasmid at -20°C. The DNA is stable for at least one year from date of shipping when stored at -20°C.

RefSeq: [NM_025757.3](#), [NP_080033.2](#)

RefSeq Size: 4437 bp

RefSeq ORF: 654 bp

Locus ID: 66771

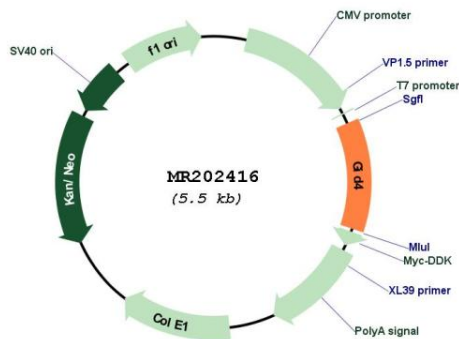
UniProt ID: [Q9CPY6](#)

Cytogenetics: 11 B2

MW: 24.9 kDa

Gene Summary: Substrate-recognition subunit of the CTLH E3 ubiquitin-protein ligase complex that selectively accepts ubiquitin from UBE2H and mediates ubiquitination and subsequent proteasomal degradation of the transcription factor HBP1. Binds proteins and peptides with a Pro/N-degron consisting of an unmodified N-terminal Pro followed by a small residue, and has the highest affinity for the peptide Pro-Gly-Leu-Trp. Binds peptides with an N-terminal sequence of the type Pro-[Ala,Gly]-[Leu, Met, Gln, Ser, Tyr]-[Glu, Gly, His, Ser, Val, Trp, Tyr]. Does not bind peptides with an acetylated N-terminal Pro residue.[UniProtKB/Swiss-Prot Function]

Product images:



Circular map for MR202416