

Product datasheet for MR202409

Alg14 (NM_024178) Mouse Tagged ORF Clone

Product data:

Product Type:	Expression Plasmids
Product Name:	Alg14 (NM_024178) Mouse Tagged ORF Clone
Tag:	Myc-DDK
Symbol:	Alg14
Synonyms:	5430428G01Rik; AI854024
Mammalian Cell Selection:	Neomycin
Vector:	pCMV6-Entry (PS100001)
E. coli Selection:	Kanamycin (25 ug/mL)
ORF Nucleotide Sequence:	>MR202409 ORF sequence Red=Cloning site Blue=ORF Green=Tags(s)

TTTTGTAATACGACTCACTATAGGGCGGCCGGAATTCGTCGACTGGATCCGGTACCGAGGAGATCTGCC
GCC**CGATCGCC**

ATGCTGAGCATTCTGATTCTAGCTGCTACAGCCGAGGGCTAGTGATCTTGCTATTCCAGCGACTATGGA
CCGTGCTTGGGCCCCATCAGTCACTCCCCGAGAGTCTCTCAGACTCTTGATCGTGGCTGGATCCGGTGG
ACACACCACTGAGATCTTGAGGCTGGTTGGAAGCTTGCCAATGCCTATTCACCAAGGCATTATGTCATT
GCTGAGTCTGATGAAATGAGTGCCAAGAAAATCCATTCTCTTGAAGAACTCTCTCGAGCCCAGAATGACT
CTACTACTGAATACCCCAAGTACCACCTTCACCGAATTCGAGAAGCCGGGAGGTTCCGGCAGTCCCTGGCT
CTCCTCTGTGTTCACTACCTTCTACTCCATGTGGTTCTCCTTCCCACTGGTTCTCCGAATAAAGCCAGAT
TTGGTGCTGTGTAATGGACCAGGAACATGCGTCCCTATCTGTGTGTCCGCCCTGTTCTTGGGATACTTG
GAGTGAAGAAAGTGATCATCGTCTATGTGCGAGAGCATCTGCCGAGTGGAGACGCTATCCCTGTCAGGGAA
GATCCTGAGGCACCTCTCCGACTACTTCATTGTTTCAGTGGCCCACTCTCAAGGAGAAGTACCCCAAGTCT
GTGTACCTGGGGCGAATTGTT

ACGCGTACGCGGGCCGCTCGAGCAGAAACTCATCTCAGAAGAGGATCTGGCAGCAAATGATATCCTGGATT
ACAAGGATGACGACGATAAGGTTTAA



[View online »](#)

Protein Sequence: >MR202409 protein sequence
Red=Cloning site Green=Tags(s)

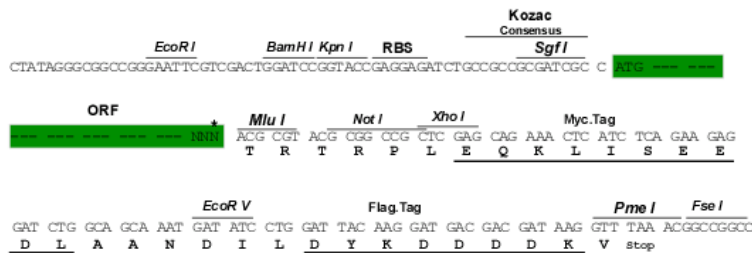
MLSILILAATAAGLVILLFQRLWTVLGP HHVTPRESLRLILVAGSGGHTTEILRLVGSLSNAYS PRHYVI
 AESDEMSAKKIHSLEEL SRAQNDSTTEYPKYHLHRIPRSREVRQSWLSSVFTTFYSMWF SFPLVLR IKPD
 LVL CNGPGTCVPICVSALLL GILGVKKVIIVYVESICRVETLSLSGKILRHLSDYFIVQWPTLKEKYPKS
 VYLGRIV

TRTRPLEQKLISEEDLAANDILDYKDDDDKV

Restriction Sites: SgfI-MluI

Cloning Scheme:

Cloning sites used for ORF Shuttling:



* The last codon before the Stop codon of the ORF

ACCN: NM_024178

ORF Size: 654 bp

OTI Disclaimer: The molecular sequence of this clone aligns with the gene accession number as a point of reference only. However, individual transcript sequences of the same gene can differ through naturally occurring variations (e.g. polymorphisms), each with its own valid existence. This clone is substantially in agreement with the reference, but a complete review of all prevailing variants is recommended prior to use. [More info](#)

OTI Annotation: This clone was engineered to express the complete ORF with an expression tag. Expression varies depending on the nature of the gene.

Components: The ORF clone is ion-exchange column purified and shipped in a 2D barcoded Matrix tube containing 10ug of transfection-ready, dried plasmid DNA (reconstitute with 100 ul of water).

Reconstitution Method:

1. Centrifuge at 5,000xg for 5min.
2. Carefully open the tube and add 100ul of sterile water to dissolve the DNA.
3. Close the tube and incubate for 10 minutes at room temperature.
4. Briefly vortex the tube and then do a quick spin (less than 5000xg) to concentrate the liquid at the bottom.
5. Store the suspended plasmid at -20°C. The DNA is stable for at least one year from date of shipping when stored at -20°C.

RefSeq: [NM_024178.1](#)

RefSeq Size: 910 bp

RefSeq ORF: 654 bp

Locus ID: 66789

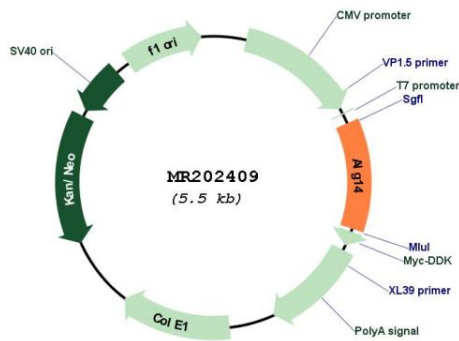
UniProt ID: [Q9D081](#)

Cytogenetics: 3 G1

MW: 24.4 kDa

Gene Summary: Involved in protein N-glycosylation. Essential for the second step of the dolichol-linked oligosaccharide pathway. Anchors the catalytic subunit ALG13 to the ER (By similarity). [UniProtKB/Swiss-Prot Function]

Product images:



Circular map for MR202409