

## Product datasheet for MR202400

### Tmem179 (NM\_178915) Mouse Tagged ORF Clone

#### Product data:

Product Type:	Expression Plasmids
Product Name:	Tmem179 (NM_178915) Mouse Tagged ORF Clone
Tag:	Myc-DDK
Symbol:	Tmem179
Synonyms:	A1839735
Mammalian Cell Selection:	Neomycin
Vector:	pCMV6-Entry (PS100001)
E. coli Selection:	Kanamycin (25 ug/mL)
ORF Nucleotide Sequence:	>MR202400 ORF sequence Red=Cloning site Blue=ORF Green=Tags(s)

TTTTGTAATACGACTCACTATAGGGCGGCCGGAATTCGTCGACTGGATCCGGTACCGAGGAGATCTGCC  
GCCCGATCGCC

ATGGCGCTCAACAATTCCTCTTCGCGCAGTGCCTGTTACTTTCTGGCCTTCTTGTTTCAGCTTCGTGG  
TGGTGGTGCCATTGTCCGAGAACGGCCACGACTTCGTGGCCGCTGCCTACTCTTACCAGGGGTATGTG  
GCTGAGTGCCAACTGACGATGCAGGGGCGGAGCGCTTCACTGTGCAGGAGTGGGGCCACCGGTGCC  
TGCCGCTTCAGCCTGCTCGCCAGCCTCCTGTCACTGCTGCTGGCTGCTGCGCACGCATGGCGCACGCTCT  
TCTTCTCTGCAAGGGACACGAGGGCTCCTTCTTCTACGCCTTCTGAACCTCCTGGTCAGTGCCTTTGT  
GGTCTTCTGGTCTTCATTGCCAGCACCATCGTGAGTGTGGGCTTACCATGTGGTGTGACACCATCACT  
GAGAAGGGCTCCACCCACAGCTGCGAGGAGTTCAGGAAACGGACTTGGAGCTGAACGTGACAACT  
CTGCCTTCTACCATCAGTTTGTATCGCCAGTTTGGACTGTGGGCTCCTGGCTGGCCTGGCTGGCGAT  
CACCACCTGGCTTTCTGAAGTTTATCACAACTACCGCCAGGAGGACCTGTTGGACAGCCTGGTTAC  
GAGAAGGAGCTTCTGCTAGCCAGGCCTACCTCCCGCACCTCCTCCAGGGGGAGAAGAGTGTGTATC

ACGCGTACGCGGGCGCTCGAGCAGAACTCATCTCAGAAGAGGATCTGGCAGCAAATGATATCTGGATT  
ACAAGGATGACGACGATAAGGTTTAA



[View online »](#)

**Protein Sequence:** >MR202400 protein sequence  
 Red=Cloning site Green=Tags(s)

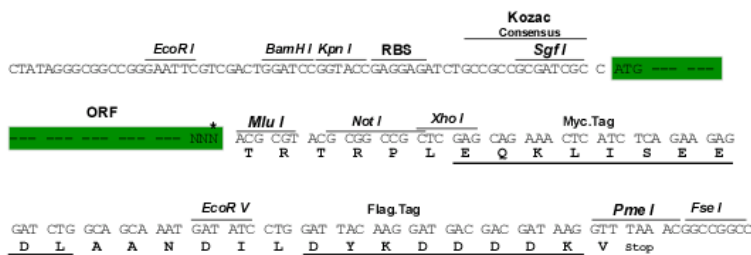
MALNNFLFAQCVCYFLAFLFSFVVVPLSENGHDFRGRCLLFTEGMWLSANLTMQGRERFTVQEWGPPAA  
 CRFSLLASLLSLLAAAHAWRTLFFLCKGHEGSFFYAFNLNLLVSFAFVFLVFIASTIVSVGFTMWCDTIT  
 EKGSTPHSCEEQETDLELNVDNSAFYHQFAIAQFGLWASWLAWLAITTLAFLKVVYHNYRQEDLLDSL VH  
 EKELLARPTSRTSFQGEKSAVI

TRTRPLEQKLISEEDLAANDILDYKDDDDKV

**Restriction Sites:** SgfI-MluI

**Cloning Scheme:**

Cloning sites used for ORF Shuttling:



\* The last codon before the Stop codon of the ORF

**ACCN:** NM\_178915

**ORF Size:** 702 bp

**OTI Disclaimer:** The molecular sequence of this clone aligns with the gene accession number as a point of reference only. However, individual transcript sequences of the same gene can differ through naturally occurring variations (e.g. polymorphisms), each with its own valid existence. This clone is substantially in agreement with the reference, but a complete review of all prevailing variants is recommended prior to use. [More info](#)

**OTI Annotation:** This clone was engineered to express the complete ORF with an expression tag. Expression varies depending on the nature of the gene.

**Components:** The ORF clone is ion-exchange column purified and shipped in a 2D barcoded Matrix tube containing 10ug of transfection-ready, dried plasmid DNA (reconstitute with 100 ul of water).

**Reconstitution Method:**

1. Centrifuge at 5,000xg for 5min.
2. Carefully open the tube and add 100ul of sterile water to dissolve the DNA.
3. Close the tube and incubate for 10 minutes at room temperature.
4. Briefly vortex the tube and then do a quick spin (less than 5000xg) to concentrate the liquid at the bottom.
5. Store the suspended plasmid at -20°C. The DNA is stable for at least one year from date of shipping when stored at -20°C.

**RefSeq:** [NM\\_178915.3](#), [NP\\_849246.2](#)

**RefSeq Size:** 2373 bp

**RefSeq ORF:** 702 bp

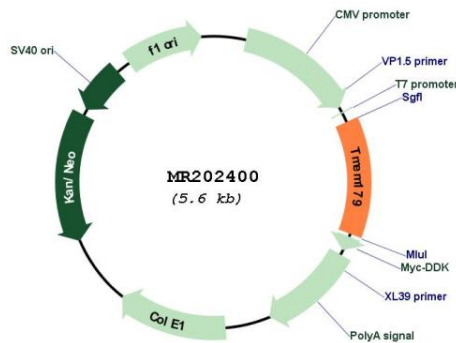
**Locus ID:** 104885

**UniProt ID:** [Q8BHH9](#)

**Cytogenetics:** 12 F1

**MW:** 26.5 kDa

**Product images:**



Circular map for MR202400