

Product datasheet for MR202371

Adamts15 (BC034843) Mouse Tagged ORF Clone

Product data:

Product Type: Expression Plasmids
Product Name: Adamts15 (BC034843) Mouse Tagged ORF Clone
Tag: Myc-DDK
Symbol: Adamts15
Synonyms: MGC41037
Mammalian Cell Selection: Neomycin
Vector: pCMV6-Entry (PS100001)
E. coli Selection: Kanamycin (25 ug/mL)
ORF Nucleotide Sequence: >MR202371 representing BC034843
Red=Cloning site Blue=ORF Green=Tags(s)

TTTTGTAATACGACTCACTATAGGGCGGCCGGAATTCGTCGACTGGATCCGGTACCGAGGAGATCTGCC
GCC**CGATCGCC**

ATGGCAATTCACCCTGACCCTGCTCTTCACTGCCTCTTGGTAACCCTGTGCTCCCTCAAACCCCGCCTCT
TCCCGCTTCTCCGTTCTTGCTGTGGACTCTCCTGAGCTGTGATTTGAGGGGTGCTGCCAGGGTCCGGG
AGAGTGGACGCCCTGGGGTCTTGGAGCAGGTGTCCAGCTCTTGTGGTCGGGGCGTCTCAGTGCCGAGA
CGCCAATGTGTCCGACTTCCGGAGAGGAACCTTGTGGGGCAGCCATGAATACCGGTGTGCCAGC
TGCCGGACTGCCCTCCAGGGACCACACCATTCCGAGACCTGCAGTGTCTCTACAATGGCCACCCTGT
CCTGGACACCCAGAAAACCTACCAGTGGGTGCCCTTCCACGGGGCGCCAATGTGTGTGACCTCACTGC
CTAGCTGAAGGCCACGCCTTCTACCACAGCTTTGGCCGCGTGTGGATGGCACCCCTGCACCCCGGTA
CCCAGGGTCTCTGCGTGGCAGGCCGCTGTCTGAGCGCAGGCTGTGACGGGATACTGGGCTCCGGCACCT
CGAGGACCGCTGCGGCTCTGTGGTGGCGCTAACGACTCTTGCTGTTCGTGCAGCGCGTGTCCGCGAC
GCCGCTATCGGTCCC

ACGCGTACGCGGGCGCTCGAGCAGAACTCATCTCAGAAGAGGATCTGGCAGCAAATGATATCTGGATT
ACAAGGATGACGACGATAAGGTTTAA



[View online »](#)

Protein Sequence: >MR202371 representing BC034843
Red=Cloning site Green=Tags(s)

MAIHPDPALHCLLVTLCSLKPRLFPLLPFLLWTLLSCDLRGAAQGPGEWTPWGSWSRCSSSSCGRGVSVRR
 RQCVRLPGEELCWGDSHEYRVCQLPDCPPGTTFFRDLQCSLYNGHPVLDTKQTYQWVPFHGAPNVCDLNC
 LAEGHAFYHSFGRVLDGTPCTPGTQGLCVAGRCLSAGCDGILGSGTLEDRCGLCGGANDSCLFVQRVFRD
 AAIGP

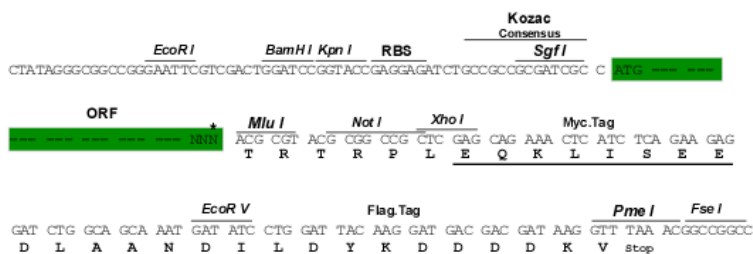
TRTRPLEQKLISEEDLAANDILDYKDDDDKV

Chromatograms: https://cdn.origene.com/chromatograms/mm9005_d04.zip

Restriction Sites: SgfI-MluI

Cloning Scheme:

Cloning sites used for ORF Shuttling:



* The last codon before the Stop codon of the ORF

ACCN: BC034843

ORF Size: 645 bp

OTI Disclaimer: The molecular sequence of this clone aligns with the gene accession number as a point of reference only. However, individual transcript sequences of the same gene can differ through naturally occurring variations (e.g. polymorphisms), each with its own valid existence. This clone is substantially in agreement with the reference, but a complete review of all prevailing variants is recommended prior to use. [More info](#)

OTI Annotation: This clone was engineered to express the complete ORF with an expression tag. Expression varies depending on the nature of the gene.

Components: The ORF clone is ion-exchange column purified and shipped in a 2D barcoded Matrix tube containing 10ug of transfection-ready, dried plasmid DNA (reconstitute with 100 ul of water).

Reconstitution Method:

1. Centrifuge at 5,000xg for 5min.
2. Carefully open the tube and add 100ul of sterile water to dissolve the DNA.
3. Close the tube and incubate for 10 minutes at room temperature.
4. Briefly vortex the tube and then do a quick spin (less than 5000xg) to concentrate the liquid at the bottom.
5. Store the suspended plasmid at -20°C. The DNA is stable for at least one year from date of shipping when stored at -20°C.

RefSeq: [BC034843](#)

RefSeq Size: 2099 bp

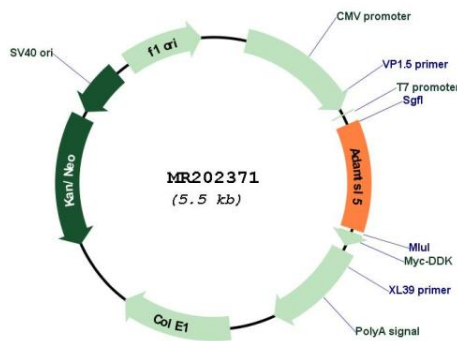
RefSeq ORF: 647 bp

Locus ID: 66548

Cytogenetics: 10 C1

MW: 76.9 kDa

Product images:



Circular map for MR202371