

Product datasheet for MR202359

Rab14 (NM_026697) Mouse Tagged ORF Clone

Product data:

Product Type:	Expression Plasmids
Product Name:	Rab14 (NM_026697) Mouse Tagged ORF Clone
Tag:	Myc-DDK
Symbol:	Rab14
Synonyms:	0610030G24Rik; 2810475J17Rik; A830021G03Rik; AI314285; AI649155; D030017L14Rik
Mammalian Cell Selection:	Neomycin
Vector:	pCMV6-Entry (PS100001)
E. coli Selection:	Kanamycin (25 ug/mL)
ORF Nucleotide Sequence:	>MR202359 ORF sequence Red=Cloning site Blue=ORF Green=Tags(s)

TTTTGTAATACGACTCACTATAGGGCGGCCGGAATTCGTCGACTGGATCCGGTACCGAGGAGATCTGCC
GCC**CGATCGCC**

ATGGCAACTGCACCGTACAACACTCTTACATCTTTAAGTATATTATTATTGGGGATATGGGAGTAGGAA
AATCTTGCTTGCTTCATCAATTTACAGAAAAAATTTATGGCTGATTGTCCTCACACAATTGGTGTGA
ATTTGGTACAAGAATAATTGAAGTTAGTGGTCAAAAAATCAAACGCAGATTTGGGATACAGCAGGGCAG
GAGCGGTTACAGCGGTTACACGGAGCTACTATAGAGGAGCTGCAGGTGCGCTCATGGTGTATGACATCA
CCAGAAGAAGTACATATAACCACTTAAGCAGCTGGTTGACAGACGCAAGGAATCTACCAATCCAAACAC
TGTAATAATTCTCATAGGAAATAAAGCAGACTTGAAGCAGAGAGATGTTACCTATGAAGAAGCCAAA
CAGTTTGCTGAGGAAAACGGCTTATTGTTCTTGAAGCAAGCGCAAAAACGGGAGAGAATGTAGAAGATG
CTTTTCTTGAGGCTGCCAAGAAAATCTATCAGAACATTCAGGATGGAAGCCTGGATCTGAATGCTGCCGA
GTCTGGTGTACAACAAACCCTCAGCCCCGAGGGAGGACGGCTAACCAAGTGAACCCCAACCCAGAGA
GAAGGCTGTGGCTGC

ACGCGTACGCGGCGCTCGAGCAGAAACTCATCTCAGAAGAGGATCTGGCAGCAATGATATCTGGATT
ACAAGGATGACGACGATAAGGTTTAA



[View online »](#)

Protein Sequence: >MR202359 protein sequence
 Red=Cloning site Green=Tags(s)

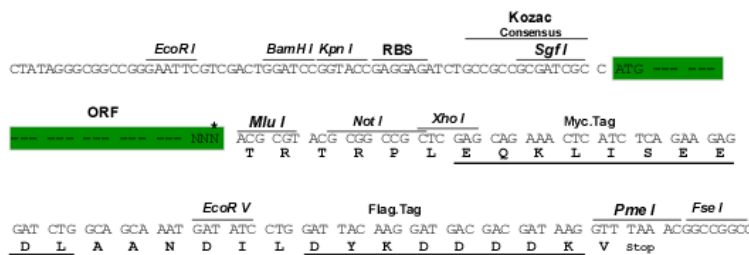
MATAPYNYSYIFKYIIIGDMGVGKSCLLHQFTEKKFMADCPHTIGVEFGTRIIIEVSGQKIKLQIWDTAGQ
 ERFRAVTRSYYRGAAGALMVYDITRRSTYNHLSSWLTARNLTNPNTVIIILIGNKADLEAQRDVTYEEAK
 QFAEENGLLFLEASAKTGENVEDAFLEAAKKIYQNIQDGLDLNAAESGVQHKPSAPQGGRLTSEPQPQR
 EGCGC

TRTRPLEQKLISEEDLAANDILDYKDDDDKV

Restriction Sites: SgfI-MluI

Cloning Scheme:

Cloning sites used for ORF Shuttling:



* The last codon before the Stop codon of the ORF

ACCN: NM_026697

ORF Size: 648 bp

OTI Disclaimer: The molecular sequence of this clone aligns with the gene accession number as a point of reference only. However, individual transcript sequences of the same gene can differ through naturally occurring variations (e.g. polymorphisms), each with its own valid existence. This clone is substantially in agreement with the reference, but a complete review of all prevailing variants is recommended prior to use. [More info](#)

OTI Annotation: This clone was engineered to express the complete ORF with an expression tag. Expression varies depending on the nature of the gene.

Components: The ORF clone is ion-exchange column purified and shipped in a 2D barcoded Matrix tube containing 10ug of transfection-ready, dried plasmid DNA (reconstitute with 100 ul of water).

Reconstitution Method:

1. Centrifuge at 5,000xg for 5min.
2. Carefully open the tube and add 100ul of sterile water to dissolve the DNA.
3. Close the tube and incubate for 10 minutes at room temperature.
4. Briefly vortex the tube and then do a quick spin (less than 5000xg) to concentrate the liquid at the bottom.
5. Store the suspended plasmid at -20°C. The DNA is stable for at least one year from date of shipping when stored at -20°C.

RefSeq: [NM_026697.4](#)

RefSeq Size: 3100 bp

RefSeq ORF: 648 bp

Locus ID: 68365

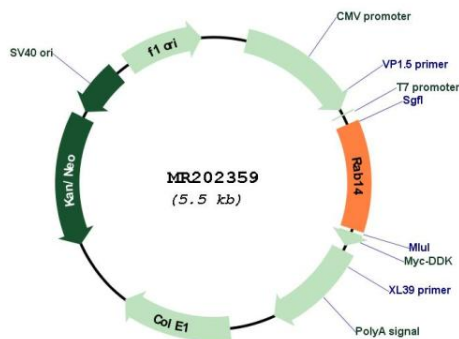
UniProt ID: [Q91V41](#)

Cytogenetics: 2 B

MW: 23.9 kDa

Gene Summary: Regulates, together with its guanine nucleotide exchange factor, DENND6A, the specific endocytic transport of ADAM10, N-cadherin/CDH2 shedding and cell-cell adhesion (By similarity). Involved in membrane trafficking between the Golgi complex and endosomes during early embryonic development. Regulates the Golgi to endosome transport of FGFR-containing vesicles during early development, a key process for developing basement membrane and epiblast and primitive endoderm lineages during early postimplantation development. May act by modulating the kinesin KIF16B-cargo association to endosomes (By similarity).[UniProtKB/Swiss-Prot Function]

Product images:



Circular map for MR202359