

## Product datasheet for MR202343

### Tmed9 (BC004691) Mouse Tagged ORF Clone

#### Product data:

Product Type:	Expression Plasmids
Product Name:	Tmed9 (BC004691) Mouse Tagged ORF Clone
Tag:	Myc-DDK
Symbol:	Tmed9
Synonyms:	2400003B06Rik
Mammalian Cell Selection:	Neomycin
Vector:	pCMV6-Entry (PS100001)
E. coli Selection:	Kanamycin (25 ug/mL)
ORF Nucleotide Sequence:	>MR202343 ORF sequence Red=Cloning site Blue=ORF Green=Tags(s)

TTTTGTAATACGACTCACTATAGGGCGCCGGGAATTCGTCGACTGGATCCGGTACCGAGGAGATCTGCC  
GCC**CGATCGCC**

ATGCGGGCCTTCCTGCTACTGCTGTGGCTTGCAGCCCGCGGAAGCGCGTGTATTTCCACATCGGAGAAA  
CAGAAAAGAAGTGCTTCATTGAGGAGATCCGGACGAGACCATGGTCATCGGAAATTACCGGACGCAGCT  
GTATGACAAACAGCGGGAGGAGTACCAGCCAGCCACCCCTGGGCTTGGCATGTTCTGAGAGGTAAGAGAC  
CCCGAGGACAAGGTCATCTGGCCCGGAGTATGGCTCTGAGGGCAGGTTACCTTCACCTCCCACACCC  
CTGGTGAGCACCAGATCTGTCTTCACTCAAATTCACCAAGTTCTCCCTTTTGTGGAGGGATGCTGAG  
GGTTCACCTTGACATCCAAGTGGGCGAACATGCAAACGACTATGCAGAAATTGCTGCCAAGGACAAGCTG  
AGCGAGCTGCAGCTGAGGGTGCAGAGCTGGTGGAGCAAGTGGAGCAGATCCAAAAGGAGCAGAAGTACC  
AGCGGTGGCGAGAAGAGCGCTTCAGACAAACAGCGAAAGCACTAACCAGCGAGTGTATGGTGGTCCGT  
CCTGCAGACTCTCATCTCTGGCCATCGGCGTCTGCCAGATGCGGCACCTCAAGAGCTTTTTTGAAGCC  
AAGAAGTTGGTG

**ACGCGT**ACGCGGGCCGCTCGAGCAGAAACTCATCTCAGAAGAGGATCTGGCAGCAAATGATATCTGGATT  
ACAAGGATGACGACGATAAGGTTTAA



[View online »](#)

**Protein Sequence:** >MR202343 protein sequence  
 Red=Cloning site Green=Tags(s)

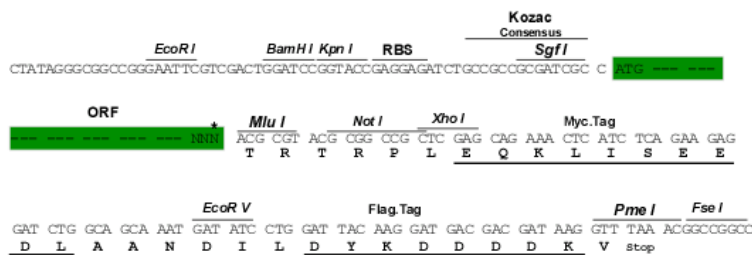
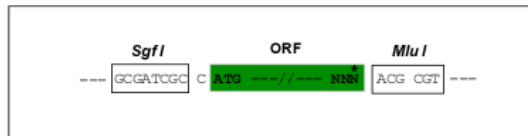
MRAFLLLLWLAARGSLYFHIGETEKKCFIEEIPDETMVIGNYRTQLYDKQREEYQPATPGLGMFVEVKD  
 PEDKVILARQYSEGRFTFTSHTPGEHQICLHSNSTKFSLFAGGMLRVHLDIQVGEHANDYAEIAAKDKL  
 SELQLRVRQLVEQVEIQKEQNYQRWREERFRQTSESTNQRVLLWVSVLQTLILLAIGVCQMRHLKSFFEA  
 KKLKLV

TRTRPLEQKLISEEDLAANDILDYKDDDDKV

**Restriction Sites:** SgfI-MluI

**Cloning Scheme:**

Cloning sites used for ORF Shuttling:



\* The last codon before the Stop codon of the ORF

**ACCN:** BC004691

**ORF Size:** 642 bp

**OTI Disclaimer:** The molecular sequence of this clone aligns with the gene accession number as a point of reference only. However, individual transcript sequences of the same gene can differ through naturally occurring variations (e.g. polymorphisms), each with its own valid existence. This clone is substantially in agreement with the reference, but a complete review of all prevailing variants is recommended prior to use. [More info](#)

**OTI Annotation:** This clone was engineered to express the complete ORF with an expression tag. Expression varies depending on the nature of the gene.

**Components:** The ORF clone is ion-exchange column purified and shipped in a 2D barcoded Matrix tube containing 10ug of transfection-ready, dried plasmid DNA (reconstitute with 100 ul of water).

**Reconstitution Method:**

1. Centrifuge at 5,000xg for 5min.
2. Carefully open the tube and add 100ul of sterile water to dissolve the DNA.
3. Close the tube and incubate for 10 minutes at room temperature.
4. Briefly vortex the tube and then do a quick spin (less than 5000xg) to concentrate the liquid at the bottom.
5. Store the suspended plasmid at -20°C. The DNA is stable for at least one year from date of shipping when stored at -20°C.

**RefSeq:** [BC004691](#), [AAH04691](#)

**RefSeq Size:** 1405 bp

**RefSeq ORF:** 644 bp

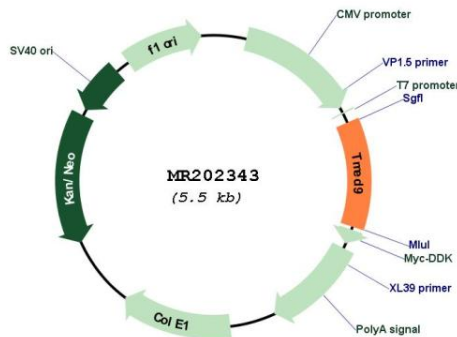
**Locus ID:** 67511

**Cytogenetics:** 13 B1

**MW:** 25 kDa

**Gene Summary:** Appears to be involved in vesicular protein trafficking, mainly in the early secretory pathway. In COPI vesicle-mediated retrograde transport involved in the coatomer recruitment to membranes of the early secretory pathway. Increases coatomer-dependent activity of ARFGAP2. Thought to play a crucial role in the specific retention of p24 complexes in cis-Golgi membranes; specifically contributes to the coupled localization of TMED2 and TMED10 in the cis-Golgi network. May be involved in organization of intracellular membranes, such as of the ER-Golgi intermediate compartment and the Golgi apparatus. Involved in ER localization of PTPN2 (By similarity).[UniProtKB/Swiss-Prot Function]

**Product images:**



Circular map for MR202343