

Product datasheet for MR202341

Cd99I2 (NM_138309) Mouse Tagged ORF Clone

Product data:

Product Type:	Expression Plasmids
Product Name:	Cd99I2 (NM_138309) Mouse Tagged ORF Clone
Tag:	Myc-DDK
Symbol:	Cd99I2
Synonyms:	AW548191; Mic2l1; Xap89
Mammalian Cell Selection:	Neomycin
Vector:	pCMV6-Entry (PS100001)
E. coli Selection:	Kanamycin (25 ug/mL)
ORF Nucleotide Sequence:	>MR202341 ORF sequence Red=Cloning site Blue=ORF Green=Tags(s)

TTTTGTAATACGACTCACTATAGGGCGCCGGGAATTCGTCGACTGGATCCGGTACCGAGGAGATCTGCC
GCC**CGATCGCC**

ATGGTGGCCAGGCTCACGGCTTTCCTCGTTTGCCTCGTTTTCTCCTTGGCCACCCTTGCCAGAGAGGAT
ATGGAGACACAGATGGTTTTAATCTGGAGGATGCACTGAAAGAACTTCCTCAGTAAAGCAGAGATGGGA
CCATGTTGCCACTACTACAAGTGAAGGCCAGGAACAAGTGAAGGATGATCGAAATGATCTAGATGGTCCAAAAAGCCAAGTGCAGGAG
GGGTTTGACTTGAAGATGCCTTGGATGATCGAAATGATCTAGATGGTCCAAAAAGCCAAGTGCAGGAG
AAGCAGGAGGTTGGTCAGACAAGGATCTTGAAGACATCGTGAAGGTGGGGGATACAAACCTGACAAGAA
TAAAGGCGGTGGTGGTTATGGCAGCAACGATGACCCTGGATCTGGCATATCGACAGAAAACCTGGCACCATT
GCAGGTGTGGCCAGTGCCTTGCTATGGCCCTGATTGGAGCTGTATCCAGCTACATCTCCTACCAGCAGA
AGAAGTTTTGCTTCAGCATTGAGCAGGGCCTCAATGCAGACTACGTGAAGGGGGAGAACCTGGAAGCTGT
TGTGTGTGAGGAGCCCCAAGTGACATACTAAAACAAGAAACGCAGTCTGCAGAACCCCCACCACCCGAG
CCACCCCGGATT

ACGCGTACGCGGCGCTCGAGCAGAAAACCTCATCTCAGAAGAGGATCTGGCAGCAAATGATATCCTGGATT
ACAAGGATGACGACGATAAGGTTTAA



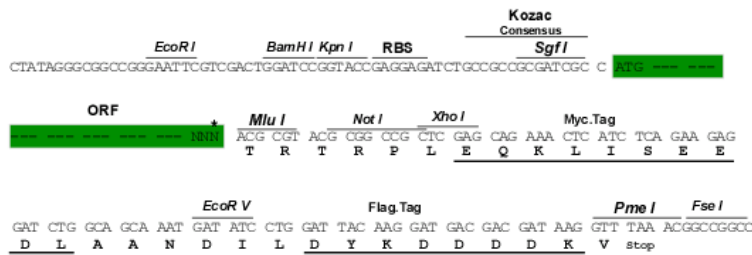
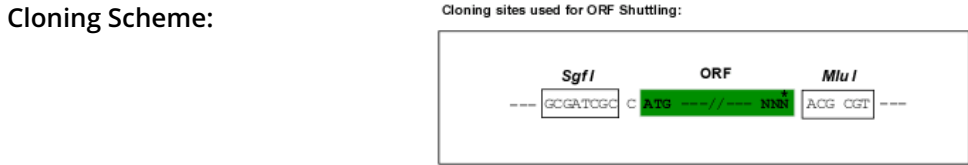
[View online »](#)

Protein Sequence: >MR202341 protein sequence
 Red=Cloning site Green=Tags(s)

MVARLTAFLVCLVFLATLVQRGYGDTDGFNLEDALKETSSVKQRWDHVATTTTTRRPGTTRAPSNPMELD
 GFDLEDALDDRNDLDGPKKPSAGEAGGWSDKDLEDIVEGGYKPDKNKGGGYSNDDPGSGISTETGTI
 AGVASALAMALIGAVSSYISYQQKFCFSIQQLNADYVKGENLEAVVCEEPQVITYSKQETQSAEPPPE
 PPRI

TRTRPLEQKLISEEDLAANDILDYKDDDDKV

Restriction Sites: SgfI-MluI



ACCN: NM_138309

ORF Size: 645 bp

OTI Disclaimer: The molecular sequence of this clone aligns with the gene accession number as a point of reference only. However, individual transcript sequences of the same gene can differ through naturally occurring variations (e.g. polymorphisms), each with its own valid existence. This clone is substantially in agreement with the reference, but a complete review of all prevailing variants is recommended prior to use. [More info](#)

OTI Annotation: This clone was engineered to express the complete ORF with an expression tag. Expression varies depending on the nature of the gene.

Components: The ORF clone is ion-exchange column purified and shipped in a 2D barcoded Matrix tube containing 10ug of transfection-ready, dried plasmid DNA (reconstitute with 100 ul of water).

Reconstitution Method:

1. Centrifuge at 5,000xg for 5min.
2. Carefully open the tube and add 100ul of sterile water to dissolve the DNA.
3. Close the tube and incubate for 10 minutes at room temperature.
4. Briefly vortex the tube and then do a quick spin (less than 5000xg) to concentrate the liquid at the bottom.
5. Store the suspended plasmid at -20°C. The DNA is stable for at least one year from date of shipping when stored at -20°C.

RefSeq: [NM_138309.3](#)

RefSeq Size: 3548 bp

RefSeq ORF: 645 bp

Locus ID: 171486

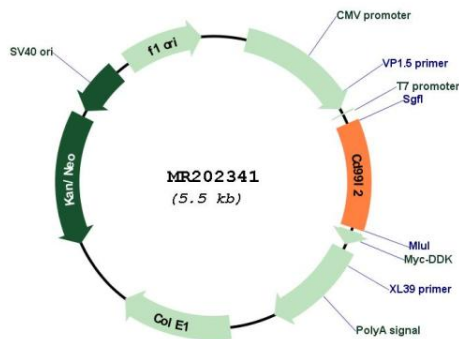
UniProt ID: [Q8BIF0](#)

Cytogenetics: X A7.3

MW: 22.8 kDa

Gene Summary: Plays a role in a late step of leukocyte extravasation helping cells to overcome the endothelial basement membrane. Acts at the same site as, but independently of, PECAM1. Homophilic adhesion molecule, but these interactions may not be required for cell aggregation. [UniProtKB/Swiss-Prot Function]

Product images:



Circular map for MR202341