

Product datasheet for **MR202336**

Rab4b (NM_029391) Mouse Tagged ORF Clone

Product data:

Product Type:	Expression Plasmids
Product Name:	Rab4b (NM_029391) Mouse Tagged ORF Clone
Tag:	Myc-DDK
Symbol:	Rab4b
Synonyms:	1500031G17Rik
Mammalian Cell Selection:	Neomycin
Vector:	pCMV6-Entry (PS100001)
E. coli Selection:	Kanamycin (25 ug/mL)
ORF Nucleotide Sequence:	>MR202336 representing NM_029391 Red=Cloning site Blue=ORF Green=Tags(s)

TTTTGTAATACGACTCACTATAGGGCGGCCGGAATTCGTCGACTGGATCCGGTACCGAGGAGATCTGCC
GCC**CGATCGCC**

ATGGCCGAGACCTACGACTTCCTCTTCAAATTCCTGGTGATTGGCAGTGCTGGAAGTGGCAAATCATGTC
TTCTCCACCAGTTTATTGAGAATAAGTTCAAACAGGACTCCAACCACACTATCGGCGTGGAGTTTGGATC
CAGGGTGGTCAACGTTGGGGGAAGACTGTGAACTACAGATTTGGGACTGCTGGCCAGGAGCGGTTT
CGGTCGGTGACGCGGAGTTATTACCGAGGGGCAGCTGGAGCCCTGCTGGTGTATGACATCACCAGCCGGG
AGACATACAACTCACTCGCTGCTTGGCTAACTGATGCCCGGACTGGCCAGCCCAACATCGTGGTCAT
CCTCTGTGGCAACAAGAAGGACCTGGATCCCGAGCGTGAGGTCACTTTCCTAGAGCTTCTCGCTTTGCT
CAGGAGAATGAGCTGATGTTCTGGAGACCAGCGCTCTCACGGGTGAGAATGTGGAAGAAGCTTTCCTCA
AGTGCGCGCGCACCATCCTCAACAAGATCGACTCAGGTGAACTAGACCCAGAGAGGATGGGTTTCAGGCAT
TCAGTATGGCGACATATCCCTCCGCCAGCTGCGGCAGCCTCGCAGCGCCAAGCCGTGGCCCTCAGCCC
TGTGGCTGC

ACGCGTACGCGGCCGCTCGAGCAGAACTCATCTCAGAAGAGGATCTGGCAGCAAATGATATCCTGGATT
ACAAGGATGACGACGATAAGGTTTAA



[View online »](#)

Protein Sequence: >MR202336 representing NM_029391
 Red=Cloning site Green=Tags(s)

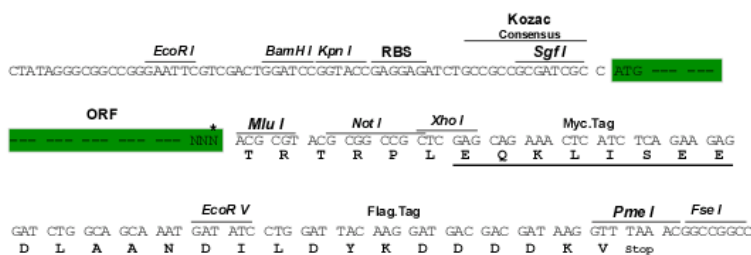
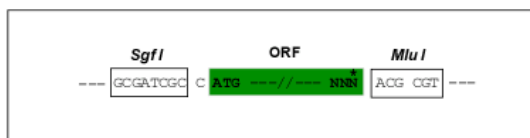
MAETYDFLFKFLVIGSAGTGKSCLLHQFIENKFKQDSNHTIGVEFGSRVVNVGGKTVKLQIWDTAGQERF
 RSVTRSYYRGAAGALLVYDITSRETYNSLAAWLTDARTLSPNIVVILCGNKKDLDPEREVTFLEASRFA
 QENELMFLETSALTGENVEEAFKLCARTILNKIDSGELDPERMGSGIQYGDISLRQLRQPRSAQAVAPQP
 CGC

TRTRPLEQKLISEEDLAANDILDYKDDDDKV

Restriction Sites: Sgfl-MluI

Cloning Scheme:

Cloning sites used for ORF Shuttling:



* The last codon before the Stop codon of the ORF

ACCN: NM_029391

ORF Size: 639 bp

OTI Disclaimer: The molecular sequence of this clone aligns with the gene accession number as a point of reference only. However, individual transcript sequences of the same gene can differ through naturally occurring variations (e.g. polymorphisms), each with its own valid existence. This clone is substantially in agreement with the reference, but a complete review of all prevailing variants is recommended prior to use. [More info](#)

OTI Annotation: This clone was engineered to express the complete ORF with an expression tag. Expression varies depending on the nature of the gene.

Components: The ORF clone is ion-exchange column purified and shipped in a 2D barcoded Matrix tube containing 10ug of transfection-ready, dried plasmid DNA (reconstitute with 100 ul of water).

Reconstitution Method:

1. Centrifuge at 5,000xg for 5min.
2. Carefully open the tube and add 100ul of sterile water to dissolve the DNA.
3. Close the tube and incubate for 10 minutes at room temperature.
4. Briefly vortex the tube and then do a quick spin (less than 5000xg) to concentrate the liquid at the bottom.
5. Store the suspended plasmid at -20°C. The DNA is stable for at least one year from date of shipping when stored at -20°C.

RefSeq: [NM_029391.2](#), [NP_083667.1](#)

RefSeq Size: 1170 bp

RefSeq ORF: 642 bp

Locus ID: 19342

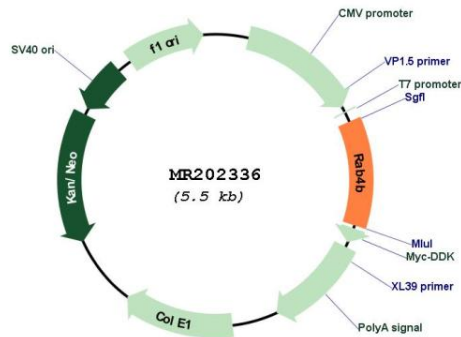
UniProt ID: [Q91ZR1](#)

Cytogenetics: 7 15.84 cM

MW: 23.6 kDa

Gene Summary: Protein transport. Probably involved in vesicular traffic (By similarity).[UniProtKB/Swiss-Prot Function]

Product images:



Circular map for MR202336