

Product datasheet for MR202322

Nabp2 (NM_027257) Mouse Tagged ORF Clone

Product data:

Product Type:	Expression Plasmids
Product Name:	Nabp2 (NM_027257) Mouse Tagged ORF Clone
Tag:	Myc-DDK
Symbol:	Nabp2
Synonyms:	2610036N15Rik; Obfc2b; SSB1
Mammalian Cell Selection:	Neomycin
Vector:	pCMV6-Entry (PS100001)
E. coli Selection:	Kanamycin (25 ug/mL)
ORF Nucleotide Sequence:	>MR202322 ORF sequence Red=Cloning site Blue=ORF Green=Tags(s)

TTTTGTAATACGACTCACTATAGGGCGGCCGGAATTCGTCGACTGGATCCGGTACCGAGGAGATCTGCC
GCC**CGATCGCC**

ATGACGACCGAGACCTTCGTGAAGGATATCAAGCCCGGGCTCAAGAATCTGAATCTTATCTTCATTGTAC
TGGAGACAGGCCGGGTGACCAAGACAAAGGACGGACACGAGGTTTCGGACCTGTAAAGTGGCAGACAAAAC
GGGCAGCATCAACATCTCAGTATGGGACGATGTGGCAACCTGATCCAACCTGGGGACATTATCCGACTC
ACCAAAGGTATGCTTCAGTGTCAAAGTTGTCTGACACTGTACACTGGCCGTGGGGCGATCTGCAGA
AGATTGGAGAATTCTGTATGGTTTATTCCGAAGTCCCTAATTTTCAGTGAGCCCAATCCAGAGTATAACAC
GCAGCAGGCGCCCAACAATCGGTGCAGAACAAATGACAACAGCCCTACTGCCCCACAAGCGACCACGGGA
CCCCCTGCTGCCTCTCCAGCTTCCGAGAACCAACGGAATGGACTGAGCACCCAGCTAGGTCCTGTGG
GTGGCCCCCATCCTTCTCACACCCCTCACATCCCCCAGCACCCGAATCACTCGAAGTCAACCCAAACCA
CACGCCTTCGGCCCTCCTGGCCCTCCAGCAACCCTGTCAGCAACGGCAAGAAACCCGAAGAAGCAGC
AAGAGA

ACGCGTACGCGGCCGCTCGAGCAGAACTCATCTCAGAAGAGGATCTGGCAGCAATGATATCCTGGATT
ACAAGGATGACGACGATAAGGTTTAA


[View online »](#)

Protein Sequence: >MR202322 protein sequence
 Red=Cloning site Green=Tags(s)

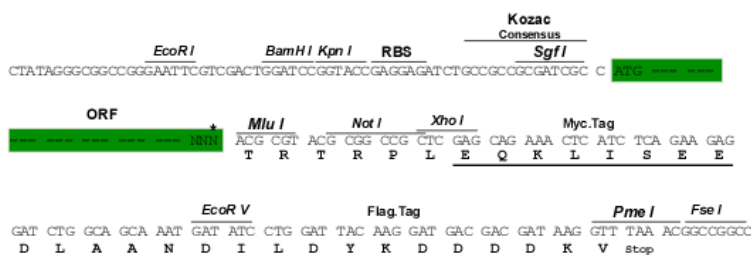
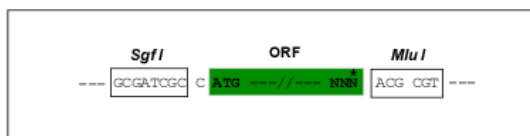
MTTETFVKDIKPLKLNLI FIVLETGRVTKTDGHEVRTCKVADKTGSINISVWDDVGNLIQPGDIIRL
 TKGYASVFKGCLTLYTGRGGDLQKIGEF CMVYSEVPNFSEPNPEYNTQQAPNKS VQNNDNSPTAPQATTG
 PPAASPASENQNGNLSTQLGPVG GPHPSHTPSHPPSTRITRSQPNHPTSGPPGPSSNPVSN GKETR RRS
 KR

TRTRPLEOKLISEEDLAANDILDYKDDDDKV

Restriction Sites: Sgfl-MluI

Cloning Scheme:

Cloning sites used for ORF Shuttling:



* The last codon before the Stop codon of the ORF

ACCN: NM 027257

ORF Size: 636 bp

OTI Disclaimer: The molecular sequence of this clone aligns with the gene accession number as a point of reference only. However, individual transcript sequences of the same gene can differ through naturally occurring variations (e.g. polymorphisms), each with its own valid existence. This clone is substantially in agreement with the reference, but a complete review of all prevailing variants is recommended prior to use. [More info](#)

OTI Annotation: This clone was engineered to express the complete ORF with an expression tag. Expression varies depending on the nature of the gene.

Components: The ORF clone is ion-exchange column purified and shipped in a 2D barcoded Matrix tube containing 10ug of transfection-ready, dried plasmid DNA (reconstitute with 100 ul of water).

Reconstitution Method:

1. Centrifuge at 5,000xg for 5min.
2. Carefully open the tube and add 100ul of sterile water to dissolve the DNA.
3. Close the tube and incubate for 10 minutes at room temperature.
4. Briefly vortex the tube and then do a quick spin (less than 5000xg) to concentrate the liquid at the bottom.
5. Store the suspended plasmid at -20°C. The DNA is stable for at least one year from date of shipping when stored at -20°C.

Note: Plasmids are not sterile. For experiments where strict sterility is required, filtration with 0.22um filter is required.

RefSeq: [NM_027257.2](#)

RefSeq Size: 1106 bp

RefSeq ORF: 639 bp

Locus ID: 69917

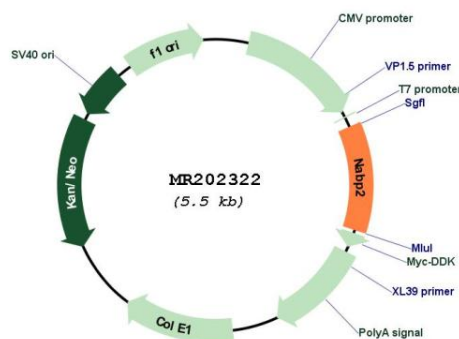
UniProt ID: [Q8R2Y9](#)

Cytogenetics: 10 D3

MW: 22.6 kDa

Gene Summary: Component of the SOSS complex, a multiprotein complex that functions downstream of the MRN complex to promote DNA repair and G2/M checkpoint. In the SOSS complex, acts as a sensor of single-stranded DNA that binds to single-stranded DNA, in particular to polypyrimidines. The SOSS complex associates with DNA lesions and influences diverse endpoints in the cellular DNA damage response including cell-cycle checkpoint activation, recombinational repair and maintenance of genomic stability. Required for efficient homologous recombination-dependent repair of double-strand breaks (DSBs) and ATM-dependent signaling pathways (By similarity).[UniProtKB/Swiss-Prot Function]

Product images:



Circular map for MR202322