

Product datasheet for MR202321

Rab2a (NM_021518) Mouse Tagged ORF Clone

Product data:

Product Type:	Expression Plasmids
Product Name:	Rab2a (NM_021518) Mouse Tagged ORF Clone
Tag:	Myc-DDK
Symbol:	Rab2a
Synonyms:	9330148M11Rik; C80220; Rab2
Mammalian Cell Selection:	Neomycin
Vector:	pCMV6-Entry (PS100001)
E. coli Selection:	Kanamycin (25 ug/mL)
ORF Nucleotide Sequence:	>MR202321 ORF sequence Red=Cloning site Blue=ORF Green=Tags(s)

TTTTGTAATACGACTCACTATAGGGCGGCCGGAATTCGTCGACTGGATCCGGTACCGAGGAGATCTGCC
GCC**CGATCGCC**

ATGGCGTACGCCTATCTCTTCAAGTACATCATCGGCGACACAGGTGTTGGTAAATCGTGCTTATTGC
TACAGTTTACAGACAAGAGGTTTCAGCCGGTGCATGACCTCACAATTGGTGTAGAGTTTGGTGCTCGGAT
GATAACGATTGATGGGAAACAGATAAACTCCAGATCTGGGATACAGCAGGCAGGAGTCCTTTCTGTTCT
ATCACACGGTCATATTACAGAGGTGCAGCGGGGCTTTACTAGTGTATGATATTACAAGGAGAGACACGT
TCAACCACTTGACAACCTGGTTAGAAGATGCCCGTCAGCATTCCAATTCCAACATGGTCATCATGCTTAT
TGGAAATAAAAGTGACTTAGAATCTAGGAGAGAAGTGAAAAGGAAGAAGGTGAAGCTTTTGCACGAGAG
CATGGACTTATCTTCATGGAAACTTCTGCCAAGACTGCGTCTAATGTAGAAAAGGCATTTATTAACACAG
CAAAAGAAATTTATGAAAAATCCAAGAAGGGTCTTTGACATTAATAATGAGGCAAACGGCATTAAAT
TGGCCCTCAGCACGCTGCTACCAACGCATCTCATGGAAGCAACCAAGCGGACAGCAGGCAGGGGGAGGC
TGCTGT

ACGCGTACGCGGCGCTCGAGCAGAACTCATCTCAGAAGAGGATCTGGCAGCAATGATATCCTGGATT
ACAAGGATGACGACGATAAGGTTTAA



[View online »](#)

Protein Sequence: >MR202321 protein sequence
 Red=Cloning site Green=Tags(s)

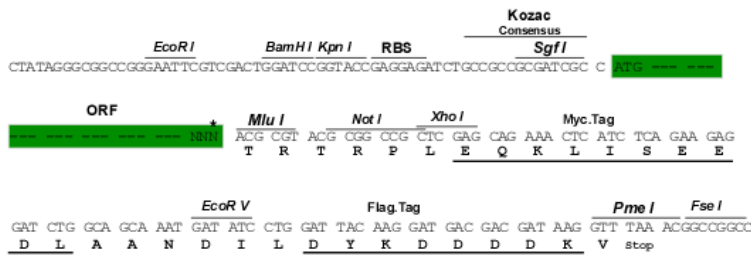
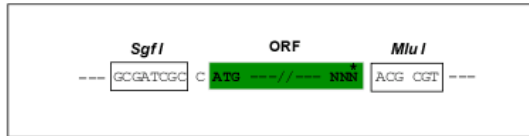
MAYAYLFKYIIIGDVGKSCLLLQFTDKRFQPVHDLTIGVEFGARMITIDGKQIKLQIWDTAGQESFRS
 ITRSYRGAAGALLVYDITRRDTFNHLTTWLEDARQHSNSNMVIMLIGNKSDLESRRVKKEEGEAFARE
 HGLIFMETSAKTASNVEKAFINTAKEIYEKIQEGVFDINNEANGIKIGPQHAATNASHGNSQGGQQAGGG
 CC

TRTRPLEQKLISEEDLAANDILDYKDDDDKV

Restriction Sites: SgfI-MluI

Cloning Scheme:

Cloning sites used for ORF Shuttling:



* The last codon before the Stop codon of the ORF

ACCN: NM_021518

ORF Size: 639 bp

OTI Disclaimer: The molecular sequence of this clone aligns with the gene accession number as a point of reference only. However, individual transcript sequences of the same gene can differ through naturally occurring variations (e.g. polymorphisms), each with its own valid existence. This clone is substantially in agreement with the reference, but a complete review of all prevailing variants is recommended prior to use. [More info](#)

OTI Annotation: This clone was engineered to express the complete ORF with an expression tag. Expression varies depending on the nature of the gene.

Components: The ORF clone is ion-exchange column purified and shipped in a 2D barcoded Matrix tube containing 10ug of transfection-ready, dried plasmid DNA (reconstitute with 100 ul of water).

Reconstitution Method:

1. Centrifuge at 5,000xg for 5min.
2. Carefully open the tube and add 100ul of sterile water to dissolve the DNA.
3. Close the tube and incubate for 10 minutes at room temperature.
4. Briefly vortex the tube and then do a quick spin (less than 5000xg) to concentrate the liquid at the bottom.
5. Store the suspended plasmid at -20°C. The DNA is stable for at least one year from date of shipping when stored at -20°C.

RefSeq: [NM_021518.1](#), [NM_021518.2](#), [NM_021518.3](#), [NP_067493.1](#)

RefSeq Size: 2057 bp

RefSeq ORF: 639 bp

Locus ID: 59021

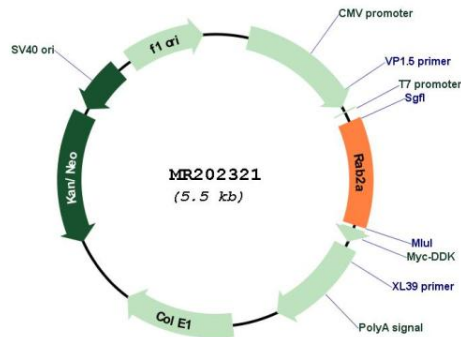
UniProt ID: [P53994](#)

Cytogenetics: 4 A1

MW: 23.5 kDa

Gene Summary: Required for protein transport from the endoplasmic reticulum to the Golgi complex. [UniProtKB/Swiss-Prot Function]

Product images:



Circular map for MR202321