

Product datasheet for **MR202320**

Kdelr2 (NM_025841) Mouse Tagged ORF Clone

Product data:

Product Type: Expression Plasmids
Product Name: Kdelr2 (NM_025841) Mouse Tagged ORF Clone
Tag: Myc-DDK
Symbol: Kdelr2
Synonyms: 1110007A14Rik
Mammalian Cell Selection: Neomycin
Vector: pCMV6-Entry (PS100001)
E. coli Selection: Kanamycin (25 ug/mL)
ORF Nucleotide Sequence: >MR202320 ORF sequence
Red=Cloning site Blue=ORF Green=Tags(s)

TTTTGTAATACGACTCACTATAGGGCGCCGGGAATTCGTCGACTGGATCCGGTACCGAGGAGATCTGCC
GCC**CGATCGCC**

ATGAACATCTTCCGGCTGACTGGGGACCTGTCCCACCTGGCGGCCATCGTCATCCTACTGCTGAAGATCT
GGAAGACGCGCTCCTGTGCTGGGATCTCTGGGAAGAGTCAGCTCCTGTTGCGACTGGTCTTCAGACTCG
CTACCTGGACCTTTTCACCTTCATTTCTTATACAACACGTCTATGAAGCTTATCTACATTGCCTGC
TCCTATGCCACGGTGTACCTGATCTACATGAAATTTAAGGCCACCTATGATGAAATCACGATACCTTCC
GAGTGGAGTTCCTGGTGGTTCCTGTAGGAGGCCTCTCATTCTAGTCAATCATGACTTCTCTCCTTGA
GATCTTATGGACCTTCTCCATCTACCTGGAGTCCGTGGCCATCCTTCCACAGCTCTTTATGATCAGCAAG
ACTGGCGAGGCTGAGACCATCACCACTACCTCTTCTTCTGGGCCTCTACCGCCTCTGTACCTGG
TCAACTGGATCTGGCGCTTCTACTTCGAGGGCTTCTTTGATCTCATTGCTGTGGTGGCTGGTGTCTGCCA
GACCATTCTACTGCGACTTCTTCTACTTGTACATTACAAAAGTACTCAAAGGGAAGAAGCTCAGCCTG
CCAGCC

ACGCGTACGCGGCGCTCGAGCAGAACTCATCTCAGAAGAGGATCTGGCAGCAATGATATCCTGGATT
ACAAGGATGACGACGATAAGGTTTAA



[View online »](#)

Protein Sequence: >MR202320 protein sequence
Red=Cloning site Green=Tags(s)

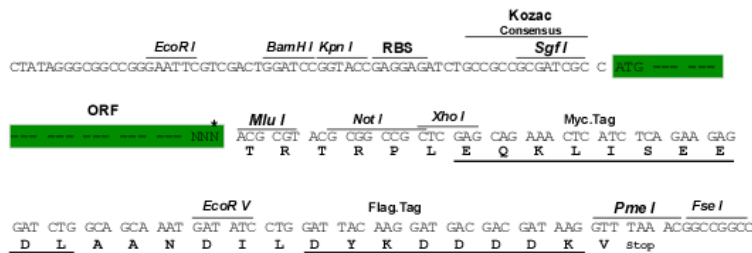
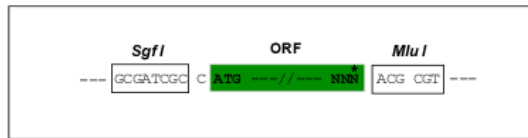
MNIFRLTGDSLHLAAIVILLKIKWTRSCAGISGKSQLLFALVFTRRYLDLFTSFISLYNTSMKLIYIAC
 SYATVYLIYMKFKATYDGNHDTFRVEFLVVPVGGLSFLVNHDFSPLEILWTFESIYLESVAIPLQLFMISK
 TGEAETITTHYLFLLGLYRALYLVNWIWRFYFEGFFDLIAVVAGVVQITILYCDFFLYITKVLKGGKLSL
 PA

TRTRPLEQKLISEEDLAANDILDYKDDDDKV

Restriction Sites: SgfI-MluI

Cloning Scheme:

Cloning sites used for ORF Shuttling:



* The last codon before the Stop codon of the ORF

ACCN: NM_025841

ORF Size: 639 bp

OTI Disclaimer: The molecular sequence of this clone aligns with the gene accession number as a point of reference only. However, individual transcript sequences of the same gene can differ through naturally occurring variations (e.g. polymorphisms), each with its own valid existence. This clone is substantially in agreement with the reference, but a complete review of all prevailing variants is recommended prior to use. [More info](#)

OTI Annotation: This clone was engineered to express the complete ORF with an expression tag. Expression varies depending on the nature of the gene.

Components: The ORF clone is ion-exchange column purified and shipped in a 2D barcoded Matrix tube containing 10ug of transfection-ready, dried plasmid DNA (reconstitute with 100 ul of water).

Reconstitution Method:

1. Centrifuge at 5,000xg for 5min.
2. Carefully open the tube and add 100ul of sterile water to dissolve the DNA.
3. Close the tube and incubate for 10 minutes at room temperature.
4. Briefly vortex the tube and then do a quick spin (less than 5000xg) to concentrate the liquid at the bottom.
5. Store the suspended plasmid at -20°C. The DNA is stable for at least one year from date of shipping when stored at -20°C.

RefSeq: [NM_025841.4](#)

RefSeq Size: 1870 bp

RefSeq ORF: 639 bp

Locus ID: 66913

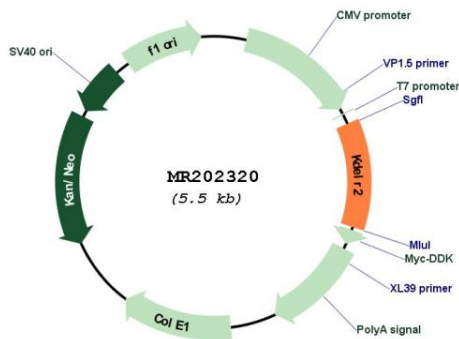
UniProt ID: [Q9CQM2](#)

Cytogenetics: 5 G2

MW: 24.5 kDa

Gene Summary: Receptor for the C-terminal sequence motif K-D-E-L that is present on endoplasmic reticulum resident proteins and that mediates their recycling from the Golgi back to the endoplasmic reticulum (By similarity). Binding is pH dependent, and is optimal at pH 5-5.4 (By similarity). [UniProtKB/Swiss-Prot Function]

Product images:



Circular map for MR202320