

Product datasheet for MR202303

Gosr2 (NM_019650) Mouse Tagged ORF Clone

Product data:

Product Type:	Expression Plasmids
Product Name:	Gosr2 (NM_019650) Mouse Tagged ORF Clone
Tag:	Myc-DDK
Symbol:	Gosr2
Synonyms:	2310032N09Rik; C76855; Gs27; membrin; SNARE
Mammalian Cell Selection:	Neomycin
Vector:	pCMV6-Entry (PS100001)
E. coli Selection:	Kanamycin (25 ug/mL)
ORF Nucleotide Sequence:	>MR202303 ORF sequence Red=Cloning site Blue=ORF Green=Tags(s)

TTTTGTAATACGACTCACTATAGGGCGCCGGGAATTCGTCGACTGGATCCGGTACCGAGGAGATCTGCC
GCC**CGATCGCC**

ATGGAGCCCTATACCAACAAACGAACAAGCAGGTTCCAGGAGATCCAGTCTCACATGGGACGCCTGGAGA
GGGCAGACAAGCAGTCTGTGCACCTTAGTAGAAAATGAGATCCAAGCAAGCATAGAGCAAATATTCAGCCA
TCTGGAGCGCCTGGAGATTTTGTCAAGCAAGGAGCCCTTGAATAGAAGACAGAATGCCAAACTCCGTGTC
GACCAGCTAAAGTATGATGTCCAGCACTTCAGACTGCCCTCAGGAACTTTCAGCACCGGCCCAAGTCA
GGGAGCAGCAGGAGAGACAGCGAGACGAGCTTCTGTCTCGCACCTTCACCACTAACGACTCTGACACCAC
CATTCCCATGGATGAATCACTGCAGTTAACTCCTCCCTCCACAACATTCACCACGGCATGGATGACCTC
ATTGGAGGCGGGCACAGTATTCTGGAGGACTGAGGGCCAGAGACTGACCTTGAAGGGGACTCAGAAGA
AGATCCTTGACATTGCTAACATGCTCGGCTTGTCCAACACAGTATGAGGCTGATTGAGAAGCGGGCCTT
CCAGGACAAGTACTTCATGATCGGTGGGATGCTGCTCACTTGTGCAGTCATGTTCTCTGGTACAGTAC
CTGACA

ACGCGTACGCGGCGCTCGAGCAGAACTCATCTCAGAAGAGGATCTGGCAGCAAATGATATCCTGGATT
ACAAGGATGACGACGATAAGGTTTAA



[View online »](#)

Protein Sequence: >MR202303 protein sequence
 Red=Cloning site Green=Tags(s)

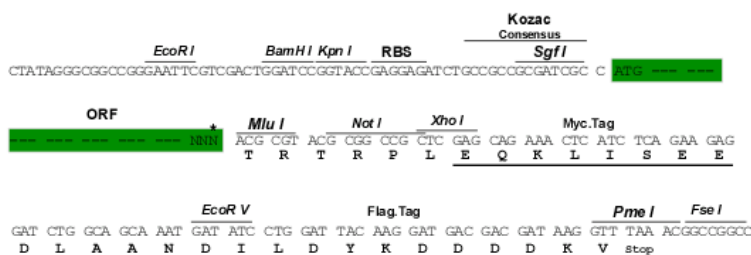
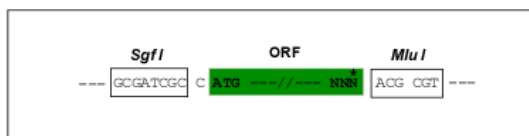
MEPLYQQTNKQVQEIQSHMGRLEADKQSVHLVENEIQASIEQIFSHLERLEILSSKEPLNRRQNAKLRV
 DQLKYDVQHLQTALRNFOHRRQVREQQERQDELLSRTFTTNDSDTTIPMDES LQFNSSLNHHGMDDL
 IGGHSILEGLRAQRLTLKGTQKKILDIANMLGLSNTVMRLIEKRAFQDKYFMIGGMLLTCAVMFLVVQY
 LT

TRTRPLEQKLISEEDLAANDILDYKDDDDKV

Restriction Sites: SgfI-MluI

Cloning Scheme:

Cloning sites used for ORF Shuttling:



* The last codon before the Stop codon of the ORF

ACCN: NM_019650

ORF Size: 639 bp

OTI Disclaimer: The molecular sequence of this clone aligns with the gene accession number as a point of reference only. However, individual transcript sequences of the same gene can differ through naturally occurring variations (e.g. polymorphisms), each with its own valid existence. This clone is substantially in agreement with the reference, but a complete review of all prevailing variants is recommended prior to use. [More info](#)

OTI Annotation: This clone was engineered to express the complete ORF with an expression tag. Expression varies depending on the nature of the gene.

Components: The ORF clone is ion-exchange column purified and shipped in a 2D barcoded Matrix tube containing 10ug of transfection-ready, dried plasmid DNA (reconstitute with 100 ul of water).

Reconstitution Method:

1. Centrifuge at 5,000xg for 5min.
2. Carefully open the tube and add 100ul of sterile water to dissolve the DNA.
3. Close the tube and incubate for 10 minutes at room temperature.
4. Briefly vortex the tube and then do a quick spin (less than 5000xg) to concentrate the liquid at the bottom.
5. Store the suspended plasmid at -20°C. The DNA is stable for at least one year from date of shipping when stored at -20°C.

RefSeq: [NM_019650.4](#)

RefSeq Size: 3078 bp

RefSeq ORF: 639 bp

Locus ID: 56494

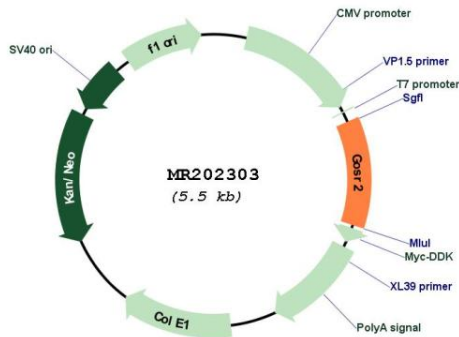
UniProt ID: [O35166](#)

Cytogenetics: 11 67.43 cM

MW: 24.7 kDa

Gene Summary: Involved in transport of proteins from the cis/medial-Golgi to the trans-Golgi network. [UniProtKB/Swiss-Prot Function]

Product images:



Circular map for MR202303