

Product datasheet for MR202293

Hlf (BC057693) Mouse Tagged ORF Clone

Product data:

Product Type:	Expression Plasmids
Product Name:	Hlf (BC057693) Mouse Tagged ORF Clone
Tag:	Myc-DDK
Symbol:	Hlf
Synonyms:	E230015K02Rik
Mammalian Cell Selection:	Neomycin
Vector:	pCMV6-Entry (PS100001)
E. coli Selection:	Kanamycin (25 ug/mL)
ORF Nucleotide Sequence:	>MR202293 ORF sequence Red=Cloning site Blue=ORF Green=Tags(s)

TTTTGTAATACGACTCACTATAGGGCGGCCGGAATTCGTCGACTGGATCCGGTACCGAGGAGATCTGCC
GCC**CGATCGCC**

ATGGACTTGGAGGAATTCCTGTCTCAGAGAATGGCATCCCCCGAGTCCGTCGCAGCACGACCACAGCCCTC
ACCCCCCTGGCTTGCAACCAGCTTCTCCACGGCGCCCTCGGTCATGGATCTCAGCAGCCGGGCCACAGC
GCCCTCCACCCGGGCATCCCGTCTCCGAAGTGTATGCAGAGCCCCATCAGACCAGGCCAGCTGTTGCCA
GCAAACCGCAATACACCGAGTCCCATTGACCCTGACACCATCCAGGTACCAGTCCGGTATGAACCAGACC
CGGCAGACCTTGCCCTCTCCAGCATCCCGGGCAGGAAATGTTTGACCCTCGCAAACGGAAGTTCTCTGA
GGAAGAACTGAAGCCACAGCCCATGATTAAGAAAGCTCGCAAAGTCTTATTCCCGATGATTTGAAGCAG
GATGACAAGTACTGGGCGAGGCGCAGAAAGAACAACATGGCGGCCAAGCGCTCCCGTATGCCCGGCGGC
TGAAGGAGAACCAGATCGCAATCCGGGCCTCATTCTGGAGAAGGAGAAGTCCGGCCTCCGCCAGGAGGT
GGCTGATTTAAGGAAGGAGCTGGGCAAATGCAAGAACAATACTTGCCAAGTACGAGGCCAGGCACGGGCC
CTG

ACGCGTACGCGGGCGCTCGAGCAGAAACTCATCTCAGAAGAGGATCTGGCAGCAAATGATATCCTGGATT
ACAAGGATGACGACGATAAGGTTTAA



Protein Sequence: >MR202293 protein sequence
 Red=Cloning site Green=Tags(s)

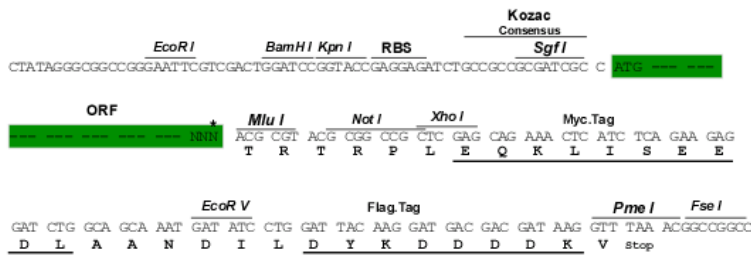
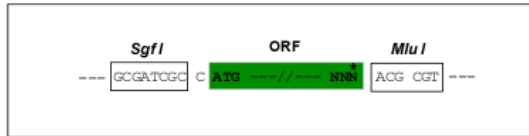
MDLEEFLENGIPPSPSQHDHSPHPGLQPASSTAPSVMDLSSRATAPLHPGIPSPNCMQSPIRPGQLLP
 ANRNTPSPIDPDTIQVPVGYEPDADLALSSIPGQEMFDPRKRKFSEEELKPQPMIKKARKVFI PDDLKQ
 DDKYWARRRKNMAAKRSRDARRLKENQIAIRASFLEKENSALRQEVADLRKELGKCKNILAKYEARHG
 L

TRTRPLEQKLISEEDLAANDILDYKDDDDKV

Restriction Sites: SgfI-MluI

Cloning Scheme:

Cloning sites used for ORF Shuttling:



* The last codon before the Stop codon of the ORF

ACCN: BC057693

ORF Size: 633 bp

OTI Disclaimer: The molecular sequence of this clone aligns with the gene accession number as a point of reference only. However, individual transcript sequences of the same gene can differ through naturally occurring variations (e.g. polymorphisms), each with its own valid existence. This clone is substantially in agreement with the reference, but a complete review of all prevailing variants is recommended prior to use. [More info](#)

OTI Annotation: This clone was engineered to express the complete ORF with an expression tag. Expression varies depending on the nature of the gene.

Components: The ORF clone is ion-exchange column purified and shipped in a 2D barcoded Matrix tube containing 10ug of transfection-ready, dried plasmid DNA (reconstitute with 100 ul of water).

Reconstitution Method:

1. Centrifuge at 5,000xg for 5min.
2. Carefully open the tube and add 100ul of sterile water to dissolve the DNA.
3. Close the tube and incubate for 10 minutes at room temperature.
4. Briefly vortex the tube and then do a quick spin (less than 5000xg) to concentrate the liquid at the bottom.
5. Store the suspended plasmid at -20°C. The DNA is stable for at least one year from date of shipping when stored at -20°C.

RefSeq: [BC057693](#), [AAH57693](#)

RefSeq Size: 2480 bp

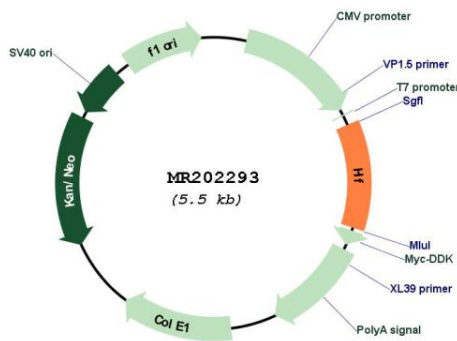
RefSeq ORF: 635 bp

Locus ID: 217082

Cytogenetics: 11 55.03 cM

MW: 23.6 kDa

Product images:



Circular map for MR202293