

## Product datasheet for MR202285

### Dusp26 (NM\_025869) Mouse Tagged ORF Clone

#### Product data:

Product Type:	Expression Plasmids
Product Name:	Dusp26 (NM_025869) Mouse Tagged ORF Clone
Tag:	Myc-DDK
Symbol:	Dusp26
Synonyms:	2310043K02Rik; Skrp3
Mammalian Cell Selection:	Neomycin
Vector:	pCMV6-Entry (PS100001)
E. coli Selection:	Kanamycin (25 ug/mL)
ORF Nucleotide Sequence:	>MR202285 ORF sequence Red=Cloning site Blue=ORF Green=Tags(s)

TTTTGTAATACGACTCACTATAGGGCGGCCGGAATTCGTCGACTGGATCCGGTACCGAGGAGATCTGCC  
GCC**CGATCGCC**

ATGTGCCCGGTAACGGCTCTGGGCTCCATGACTTTTATGGCCGCTTCTCTCGAGGCAGCTCAAGGT  
CCCCTGTCGTAACGACTCGAGGGAGCCTGGAGGAGATGCCCTCTGTTACCATCCCTTCTCAACGTCTTTGA  
GTTGGAAAGGCTCCTCTACACAGGCAAGACAGCCTGTAACCATGCTGACGAAGTCTGGCCGGCCTCTAC  
CTCGGAGACCAGGACATGGCCAACAACCGCGTGAGCTTCGTCGCTGGGCATCACCCACGTGCTCAACG  
CCTCACACAACAGGTGGCGAGGCACCCCGAGGCTATGAGGGACTGGGCATCCGCTACCTGGGTGTGGA  
GGCGCAGGACTCTCCAGCCTTTGATATGAGCATCCACTTTAGACGGCTGCGGACTTCATCCATCGGGCG  
CTGAGCCAGCCAGGAGGGAAGATCCTGGTGCATGTGCGGTGGGAGTGAGCAGATCCGCTACCCTGGTGC  
TGGCCTACCTCATGCTGTATCACCATTACCCCTTGTGGAGGCCATCAAGAAAGTCAAGGACCACCGAGG  
CATCACCCCAACCGGGCTTCTTGAGGCAGCTCCTAGCCCTGGACCGTAGGCTGCGGCAGGGTCTAGAG  
GCA

**ACGCGT**ACGCGGGCGCTCGAGCAGAACTCATCTCAGAAGAGGATCTGGCAGCAAATGATATCCTGGATT  
ACAAGGATGACGACGATAAGGTTTAA



[View online »](#)

**Protein Sequence:** >MR202285 protein sequence  
 Red=Cloning site Green=Tags(s)

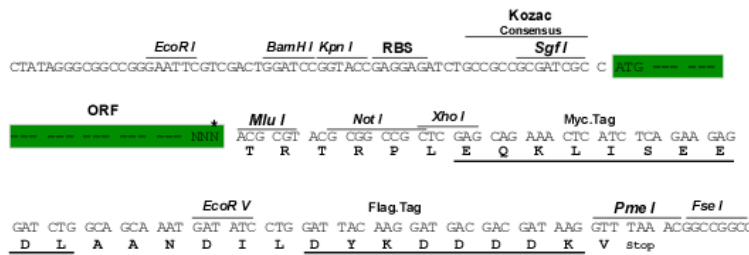
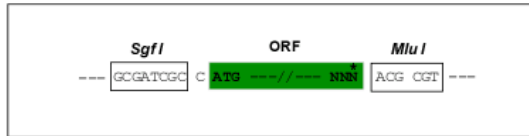
MCPGNLWASMTFMARFSRGSSRSPVTRGRSLEEMPSVHHPFLNVFELERLLYTGKTACNHADEVWPLY  
 LGDQDMANNRRELRLRGITHVLNASHNRWRGTPEAYEGLGIRYLGVEAHDSPAFDMSIHFQTAADF IHRA  
 LSQPGGKILVHCAVGVSRSATLVLAYMLYHHFTLVEAIKKVKDHRGITPNRGFLRQLLALDRRLRQGLE  
 A

TRTRPLEQKLISEEDLAANDILDYKDDDDKV

**Restriction Sites:** SgfI-MluI

**Cloning Scheme:**

Cloning sites used for ORF Shuttling:



\* The last codon before the Stop codon of the ORF

**ACCN:** NM\_025869

**ORF Size:** 636 bp

**OTI Disclaimer:** The molecular sequence of this clone aligns with the gene accession number as a point of reference only. However, individual transcript sequences of the same gene can differ through naturally occurring variations (e.g. polymorphisms), each with its own valid existence. This clone is substantially in agreement with the reference, but a complete review of all prevailing variants is recommended prior to use. [More info](#)

**OTI Annotation:** This clone was engineered to express the complete ORF with an expression tag. Expression varies depending on the nature of the gene.

**Components:** The ORF clone is ion-exchange column purified and shipped in a 2D barcoded Matrix tube containing 10ug of transfection-ready, dried plasmid DNA (reconstitute with 100 ul of water).

**Reconstitution Method:**

1. Centrifuge at 5,000xg for 5min.
2. Carefully open the tube and add 100ul of sterile water to dissolve the DNA.
3. Close the tube and incubate for 10 minutes at room temperature.
4. Briefly vortex the tube and then do a quick spin (less than 5000xg) to concentrate the liquid at the bottom.
5. Store the suspended plasmid at -20°C. The DNA is stable for at least one year from date of shipping when stored at -20°C.

**RefSeq:** [NM\\_025869.1](#), [NM\\_025869.2](#), [NM\\_025869.3](#), [NP\\_080145.1](#)

**RefSeq Size:** 1747 bp

**RefSeq ORF:** 636 bp

**Locus ID:** 66959

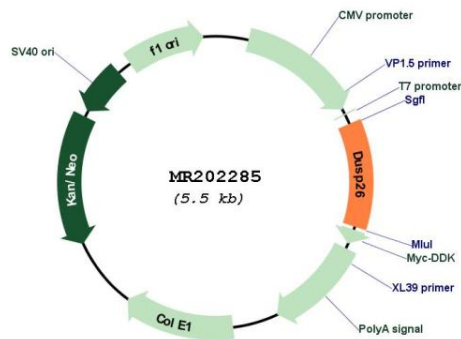
**UniProt ID:** [Q9D700](#)

**Cytogenetics:** 8 A3

**MW:** 23.9 kDa

**Gene Summary:** Inactivates MAPK1 and MAPK3 which leads to dephosphorylation of heat shock factor protein 4 and a reduction in its DNA-binding activity.[UniProtKB/Swiss-Prot Function]

### Product images:



Circular map for MR202285