

## Product datasheet for MR202281

### Rpl13 (NM\_016738) Mouse Tagged ORF Clone

#### Product data:

Product Type: Expression Plasmids  
 Product Name: Rpl13 (NM\_016738) Mouse Tagged ORF Clone  
 Tag: Myc-DDK  
 Symbol: Rpl13  
 Synonyms: A52; L13  
 Mammalian Cell Selection: Neomycin  
 Vector: pCMV6-Entry (PS100001)  
 E. coli Selection: Kanamycin (25 ug/mL)  
 ORF Nucleotide Sequence: >MR202281 representing NM\_016738  
 Red=Cloning site Blue=ORF Green=Tags(s)

TTTTGTAATACGACTCACTATAGGGCGGCCGGAATTCGTCGACTGGATCCGGTACCGAGGAGATCTGCC  
 GCCCGATCGCC

ATGGCGCCAGCCGGAATGGCATGATACTGAAGCCCCACTTCCACAAGGATTGGCAGCAGCGAGTGGACA  
 CTTGGTTCAACCAGCCGGCGCGCAAGATCCGCAGGCGCAAGGCCCGCAGGCGAAAGCGGTGCGATCGC  
 CCCTCGCCCCGCGTCCGGCCCCATCAGGCCCATCGTGAGGTGCCCTACAGTGAGATACCACCAAGGTC  
 CGGGCTGGCAGGGGCTTCAGCCTGGAGGAGCTCAGGGTGGCTGGCATCCACAAGAAAGTGGCTCGCACCA  
 TCGGCATCTCTGTGGACCCGAGGAGGCGAAACAAGTCCACGGAGTCACTGCAGGCCAACGTGCAGCGCCT  
 GAAGGAGTACCGCTCCAAGCTCATCCTGTTCCCCAGGAAGCCTTCTGCTCCGAAGAAGGGAGACAGTTCT  
 GCTGAAGAACTTAAGCTGGCCACCCAGCTGACAGGACCTGTGATGCCATCCGGAATGTGTACAAAAAGG  
 AAAAGGCCAGAGTTATCACAGAAGAAGAGAAGAACTTTAAGGCTTTTGCCAGTCTCCGAATGGCCCGTGC  
 CAATGCCCGACTCTTTGGCATCCGAGCAAAAAGGGCGAAGGAAGCTGCAGAGCAAGATGTTGAAAAGAAA  
 AAA

ACGCGTACGCGGCCGCTCGAGCAGAACTCATCTCAGAAGAGGATCTGGCAGCAATGATATCCTGGATT  
 ACAAGGATGACGACGATAAGGTTTAA



[View online »](#)

**Protein Sequence:** >MR202281 representing NM\_016738  
Red=Cloning site Green=Tags(s)

MAPSRNGMILKPHFHKDWQQRVDTWFNQPARKIRRRKARQAKARRIAPRPASGPIRPIVRCPTVRYHTKV  
 RAGRGFSLEELRVAGIHKKVARTIGISVDPRRRNKSTESLQANVQRLKEYRSKLILFPRKPSAPKKGDS  
 AEELKLATQLTGPVMPPIRNVYKKEKARVITEEKNFKAFASLRMARANARLFGIRAKRAKEAAEQDVEKK  
 K

TRTRPLEQKLISEEDLAANDILDYKDDDDKV

**Restriction Sites:** SgfI-MluI

**Cloning Scheme:**

Cloning sites used for ORF Shuttling:



**ACCN:** NM\_016738

**ORF Size:** 633 bp

**OTI Disclaimer:** The molecular sequence of this clone aligns with the gene accession number as a point of reference only. However, individual transcript sequences of the same gene can differ through naturally occurring variations (e.g. polymorphisms), each with its own valid existence. This clone is substantially in agreement with the reference, but a complete review of all prevailing variants is recommended prior to use. [More info](#)

**OTI Annotation:** This clone was engineered to express the complete ORF with an expression tag. Expression varies depending on the nature of the gene.

**Components:** The ORF clone is ion-exchange column purified and shipped in a 2D barcoded Matrix tube containing 10ug of transfection-ready, dried plasmid DNA (reconstitute with 100 ul of water).

**Reconstitution Method:**

1. Centrifuge at 5,000xg for 5min.
2. Carefully open the tube and add 100ul of sterile water to dissolve the DNA.
3. Close the tube and incubate for 10 minutes at room temperature.
4. Briefly vortex the tube and then do a quick spin (less than 5000xg) to concentrate the liquid at the bottom.
5. Store the suspended plasmid at -20°C. The DNA is stable for at least one year from date of shipping when stored at -20°C.

**RefSeq:** [NM\\_016738.5](#)

**RefSeq Size:** 713 bp

**RefSeq ORF:** 636 bp

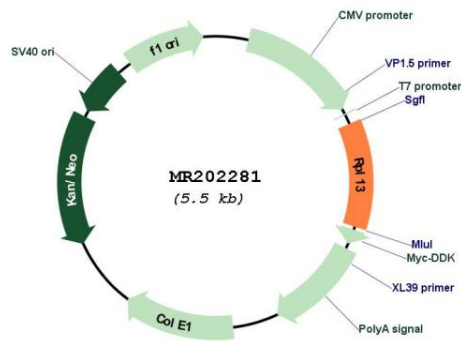
**Locus ID:** 270106

**UniProt ID:** [P47963](#)

**Cytogenetics:** 8 E1

**MW:** 24.8 kDa

**Product images:**



Circular map for MR202281