

Product datasheet for MR202267

Abhd14b (NM_029631) Mouse Tagged ORF Clone

Product data:

Product Type: Expression Plasmids
Product Name: Abhd14b (NM_029631) Mouse Tagged ORF Clone
Tag: Myc-DDK
Symbol: Abhd14b
Synonyms: 1810013B01Rik
Mammalian Cell Selection: Neomycin
Vector: pCMV6-Entry (PS100001)
E. coli Selection: Kanamycin (25 ug/mL)
ORF Nucleotide Sequence: >MR202267 ORF sequence
 Red=Cloning site Blue=ORF Green=Tags(s)

TTTTGTAATACGACTCACTATAGGGCGGCCGGAATTCGTCGACTGGATCCGGTACCGAGGAGATCTGCC
 GCC**CGATCGCC**

ATGGCCGGTGTGGACCAGCATGAGGGCACCATCCAGGTGCAGGGCCAGAACCTCTTCTTCAGAGAGACCC
 GGCCTGGGAGTGGGCAGCCTGTCCGCTTCTGTGCTGCTGTCATGGTATCCGCTTCTCCTCGGAGAC
 CTGGCAGAACCTGGTACTCTGCAAAGGCTGGCTGAGGCTGGCTACAGGGCTGTGGCCATTGATCTGCCA
 GGTCTTGGGCGATCCAAGGAAGCAGCAGCCCTGCCCTATTGGGAACCGCCCTGCCAGCTTCTAG
 CTGCTGTGGTGGATACCTTGGAGCTGGGACCCAGTTGTGATCAGTCCATCATTAAAGTGGCATGTATTC
 ACTGCCCTTCTCGTGGCCCCGGTCCCAACTCCGGGGCTTGTACCAGTGGCTCCTATCTGCACAGAC
 AAAATCAATGCTGTGGACTACGCCAGTGTGAAGACTCCAGCTCTCATTGTATATGGAGACCAGGACCCCA
 TGGGCTCCTCCAGCTTCAACACCTGAAGCAGCTGCCAACACAGAGTGTGGTATGGAAGGGGCAGG
 GCATCCCTGTTACTTGGACAAGCCTGATGAGTGGCATAAGGGGCTGCTGGATTTCTGCAAGGGCTAGCC

ACGCGTACGCGGCCGCTCGAGCAGAACTCATCTCAGAAGAGGATCTGGCAGCAATGATATCCTGGATT
 ACAAGGATGACGACGATAAGGTTTAA

Protein Sequence: >MR202267 protein sequence
 Red=Cloning site Green=Tags(s)

MAGVDQHEGTIQVQGNLFFRETRPGSGQPVRFSVLLHGI RFSSETWQNLGTLQRLAEAGYRAVAIDL P
 GLGRSKEAAAPAPIGEPAPGSFLAAVVDLTELGPVVISPSLSGMYSLPFLVAPGSQLRGFVPVAPICTD
 KINAVDYASVKTPALIVYGDQDPMGSSSFQHLKQLPNHRVLMVMEGAGHPCYLDKPDDEWHKGLLDLFLQGLA

TRTRPLEQKLISEEDLAANDILDYKDDDDKV



[View online »](#)

Restriction Sites: SgfI-MluI

Cloning Scheme:



ACCN: NM_029631

ORF Size: 633 bp

OTI Disclaimer: The molecular sequence of this clone aligns with the gene accession number as a point of reference only. However, individual transcript sequences of the same gene can differ through naturally occurring variations (e.g. polymorphisms), each with its own valid existence. This clone is substantially in agreement with the reference, but a complete review of all prevailing variants is recommended prior to use. [More info](#)

OTI Annotation: This clone was engineered to express the complete ORF with an expression tag. Expression varies depending on the nature of the gene.

Components: The ORF clone is ion-exchange column purified and shipped in a 2D barcoded Matrix tube containing 10ug of transfection-ready, dried plasmid DNA (reconstitute with 100 ul of water).

Reconstitution Method:

1. Centrifuge at 5,000xg for 5min.
2. Carefully open the tube and add 100ul of sterile water to dissolve the DNA.
3. Close the tube and incubate for 10 minutes at room temperature.
4. Briefly vortex the tube and then do a quick spin (less than 5000xg) to concentrate the liquid at the bottom.
5. Store the suspended plasmid at -20°C. The DNA is stable for at least one year from date of shipping when stored at -20°C.

RefSeq: [NM_029631.2](#), [NP_083907.2](#)

RefSeq Size: 1490 bp

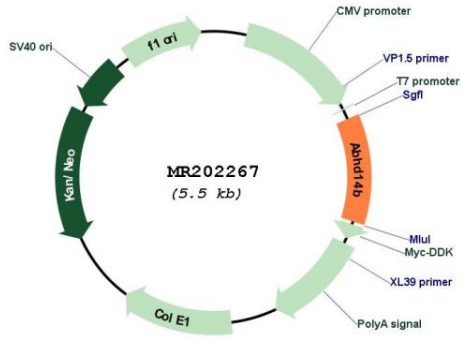
RefSeq ORF: 633 bp

Locus ID: 76491

Cytogenetics: 9 F1

MW: 22.5 kDa

Product images:



Circular map for MR202267