

OTI Disclaimer: Due to the inherent nature of this plasmid, standard methods to replicate additional amounts of DNA in E. coli are highly likely to result in mutations and/or rearrangements. Therefore, OriGene does not guarantee the capability to replicate this plasmid DNA. Additional amounts of DNA can be purchased from OriGene with batch-specific, full-sequence verification at a reduced cost. Please contact our customer care team at custsupport@origene.com or by calling 301.340.3188 option 3 for pricing and delivery.

The molecular sequence of this clone aligns with the gene accession number as a point of reference only. However, individual transcript sequences of the same gene can differ through naturally occurring variations (e.g. polymorphisms), each with its own valid existence. This clone is substantially in agreement with the reference, but a complete review of all prevailing variants is recommended prior to use. [More info](#)

OTI Annotation: This clone was engineered to express the complete ORF with an expression tag. Expression varies depending on the nature of the gene.

Components: The ORF clone is ion-exchange column purified and shipped in a 2D barcoded Matrix tube containing 10ug of transfection-ready, dried plasmid DNA (reconstitute with 100 ul of water).

Reconstitution Method:

1. Centrifuge at 5,000xg for 5min.
2. Carefully open the tube and add 100ul of sterile water to dissolve the DNA.
3. Close the tube and incubate for 10 minutes at room temperature.
4. Briefly vortex the tube and then do a quick spin (less than 5000xg) to concentrate the liquid at the bottom.
5. Store the suspended plasmid at -20°C. The DNA is stable for at least one year from date of shipping when stored at -20°C.

RefSeq: [NM_181070.5](#), [NP_851415.1](#)

RefSeq Size: 3670 bp

RefSeq ORF: 621 bp

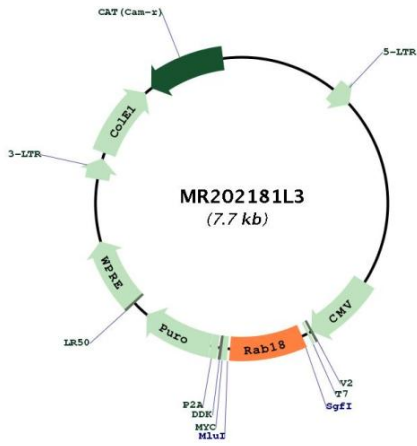
Locus ID: 19330

UniProt ID: [P35293](#)

Cytogenetics: 18 4.53 cM

Gene Summary: This gene encodes a member of the Ras-related small GTPases, which regulate membrane trafficking in organelles and transport vesicles. This protein is expressed predominantly in lipid droplets, organelles that store neutral lipids, and is proposed to play a role in lipolysis and lipogenesis. In humans mutations in this gene are associated with Warburg micro syndrome type 3. A pseudogene of this gene is located on chromosome X. Alternative splicing results in multiple transcript variants encoding different isoforms. [provided by RefSeq, Jun 2013]

Product images:



Circular map for MR202181L3