

Product datasheet for MR202175

PPP1R2 (NM_025800) Mouse Tagged ORF Clone

Product data:

Product Type: Expression Plasmids
Product Name: Ppp1r2 (NM_025800) Mouse Tagged ORF Clone
Tag: Myc-DDK
Symbol: Ppp1r2
Synonyms: 0610025N14Rik; 2310007G06Rik; 4930440J04Rik; 5430408E15Rik; D16Ertd248e; IPP-2
Mammalian Cell Selection: Neomycin
Vector: pCMV6-Entry (PS100001)
E. coli Selection: Kanamycin (25 ug/mL)
ORF Nucleotide Sequence: >MR202175 ORF sequence
 Red=Cloning site Blue=ORF Green=Tags(s)

TTTTGTAATACGACTCACTATAGGGCGGCCGGAATTCGTCGACTGGATCCGGTACCGAGGAGATCTGCC
 GCC**CGCATCGCC**

ATGGCGGCCTCAACGGCCTCGCACCGGCCATCAAAGGAATCCTGAAGAACAAGACCTCTGCGGCTCCC
 CCCCAGTGGTGCCTCGGCCGAACAGCCCCGCCGATCGTGAAGAGGAAGTCTGAGTAAAGTCTCAGAA
 GTGGGATGAAATGAATATCCTGGCAACATATCATCCCGCTGACAAAGACTATGGCTTGATGAAAATAGAC
 GAGCCAAACACCCATATCACAATATGATAGGTGACGATGAAGACGCCTATAGTGATTCAGAAGGCAATG
 AAGTCATGACTCCAGATATCTTAGCTAAGAAATTAGCTGCTGCTGAAGGCTCAGAGCCAAAGTATCGGAC
 TCGGGAGCAAGAAAGTAGTGGAGAGGAAGATAATGACCTCTCCCTGAGGAGCGAGAAAAGAAGCGACAG
 TTTGAAATGAAAAGGAAGCTTCATTACAATGAAGACTCAATATTAAGTTAGCCAGACAGTTAATTTCAA
 AAGACCTACATGATGATGATGAAGATGAAGAAATGGCAGAGACTGCAGATGGAGACAGCATGAATGTTGA
 AGAGTCAAGTCAAGGATCTACTACAAGTGACCATCTGCAACACAAATCACAAAGTTCA

ACGCGTACGCGGCCGCTCGAGCAGAACTCATCTCAGAAGAGGATCTGGCAGCAAATGATATCCTGGATT
 ACAAGGATGACGACGATAAGGTTTAA

Protein Sequence: >MR202175 protein sequence
 Red=Cloning site Green=Tags(s)

MAASTASHRPIKILKNKTSASPVPVPSAEQPRPIVEEELSKKSQKWDEMNILATYHPADKDYGLMKID
 EPNTPYHNMIGDDEDAYSSEGNEVMTDILAKKLAAGSEPKYRTREQESSGEEDNDLSPEEREKKRQ
 FEMKRKLHYNELNIKLARQLISKDLHDDDEDEEMAETADGDSMNVEESSQGSTTSDHLQHKSQSS

TRTRPLEQKLISEEDLAANDILDYKDDDDKV



[View online »](#)

Restriction Sites: SgfI-MluI

Cloning Scheme:



ACCN: NM_025800

ORF Size: 621 bp

OTI Disclaimer: The molecular sequence of this clone aligns with the gene accession number as a point of reference only. However, individual transcript sequences of the same gene can differ through naturally occurring variations (e.g. polymorphisms), each with its own valid existence. This clone is substantially in agreement with the reference, but a complete review of all prevailing variants is recommended prior to use. [More info](#)

OTI Annotation: This clone was engineered to express the complete ORF with an expression tag. Expression varies depending on the nature of the gene.

Components: The ORF clone is ion-exchange column purified and shipped in a 2D barcoded Matrix tube containing 10ug of transfection-ready, dried plasmid DNA (reconstitute with 100 ul of water).

- Reconstitution Method:
1. Centrifuge at 5,000xg for 5min.
 2. Carefully open the tube and add 100ul of sterile water to dissolve the DNA.
 3. Close the tube and incubate for 10 minutes at room temperature.
 4. Briefly vortex the tube and then do a quick spin (less than 5000xg) to concentrate the liquid at the bottom.
 5. Store the suspended plasmid at -20°C. The DNA is stable for at least one year from date of shipping when stored at -20°C.

RefSeq: [NM_025800.3](#), [NP_080076.1](#)

RefSeq Size: 4098 bp

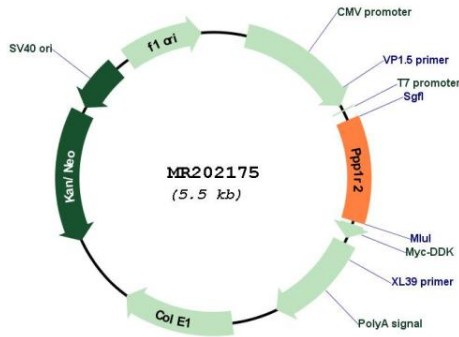
RefSeq ORF: 621 bp

Locus ID: 66849

UniProt ID: [Q9DCL8](#)

Cytogenetics: 16 21.41 cM
 MW: 23.1 kDa
 Gene Summary: Inhibitor of protein-phosphatase 1.[UniProtKB/Swiss-Prot Function]

Product images:



Circular map for MR202175