

## Product datasheet for MR202167

### Ebpl (NM\_026598) Mouse Tagged ORF Clone

#### Product data:

Product Type:	Expression Plasmids
Product Name:	Ebpl (NM_026598) Mouse Tagged ORF Clone
Tag:	Myc-DDK
Symbol:	Ebpl
Synonyms:	5730442K12Rik; EBRP
Mammalian Cell Selection:	Neomycin
Vector:	pCMV6-Entry (PS100001)
E. coli Selection:	Kanamycin (25 ug/mL)
ORF Nucleotide Sequence:	>MR202167 ORF sequence Red=Cloning site Blue=ORF Green=Tags(s)

TTTTGTAATACGACTCACTATAGGGCGGCCGGAATTCGTCGACTGGATCCGGTACCGAGGAGATCTGCC  
GCC**CGATCGCC**

ATGGGGGAGCATTGGGCGCTGGGCCCGGAGGCAGGCTCCTCCTTGCTGTTGTGCTCAGCGCTGCTGGCCG  
TAGGGTGC GCGCTGGGCCTGCGCCTGGGCCGCGGAGCGCGTGGAGCGTTGGGTGCTCGCCTGGCT  
CTGCTACGACTCACTGGTTCACCTTTGTGCTGGAAGGCGCTTTGTCTACTTGTCTATAGTAGGAAATGTT  
GCAGATCCCAAGCTTGATTGCATCTTATGAAAGAGTATGGCAAGGCTGACACAAGATGGCTGTATT  
CTGATCCACCGTTGTGCTTTGGAAATCCTGACTGTTGCTCCTAGATGGGCTCCTGGCGTTGGTCTCAT  
TTATGCCATAGTCAAGGAGAAATATTACAGGCACTTTGTACAGATTGTCCTGTGCGTGTGTGAGCTCTAT  
GGCTGCTGGATGACCTTCTCCCGAGTGGCTCGTGGAAAGCCCAAGCCTCAACACCAGCAGCTGGCTCT  
ACCTCTGGGTCTATTTGGTGTTTTTAATGGCCTGTGGGTTCTGATCCCAGGCTGCTGCTGTGGCAGTC  
ATGGGTAGAAGTGAAGAAGAGAGATTCCAAGAGGCTAATTTAGCGAAGAAGCATAAA

**ACGCGT**ACGCGGCCGCTCGAGCAGAACTCATCTCAGAAGAGGATCTGGCAGCAAATGATATCCTGGATT  
ACAAGGATGACGACGATAAGGTTTAA

Protein Sequence:	>MR202167 protein sequence Red=Cloning site Green=Tags(s)
-------------------	--

MGEHWALGPEAGSSLLCSALLAVGCALGLRLGRGRSAVERWVLAWLCYDSL VHFVLEGAFVYLSIVGNV  
ADSQGLIASLWKEYGKADTRWLYSDPTVVSLEILTVVLDGLLALVLIYAI VKEKYRHFVQIVLCVCELY  
GCWMTFFPEWL VGSPSLNTSSWLYLVVYLVFFNGLWVLI PGLLLWQSWVELKKRDSQEANLAKKHK

**TR**TRPLEQKLISEEDLAANDILDYKDDDDKV



[View online »](#)

Restriction Sites: Sgfl-MluI

Cloning Scheme:



ACCN: NM\_026598

ORF Size: 621 bp

OTI Disclaimer: The molecular sequence of this clone aligns with the gene accession number as a point of reference only. However, individual transcript sequences of the same gene can differ through naturally occurring variations (e.g. polymorphisms), each with its own valid existence. This clone is substantially in agreement with the reference, but a complete review of all prevailing variants is recommended prior to use. [More info](#)

OTI Annotation: This clone was engineered to express the complete ORF with an expression tag. Expression varies depending on the nature of the gene.

Components: The ORF clone is ion-exchange column purified and shipped in a 2D barcoded Matrix tube containing 10ug of transfection-ready, dried plasmid DNA (reconstitute with 100 ul of water).

- Reconstitution Method:
1. Centrifuge at 5,000xg for 5min.
  2. Carefully open the tube and add 100ul of sterile water to dissolve the DNA.
  3. Close the tube and incubate for 10 minutes at room temperature.
  4. Briefly vortex the tube and then do a quick spin (less than 5000xg) to concentrate the liquid at the bottom.
  5. Store the suspended plasmid at -20°C. The DNA is stable for at least one year from date of shipping when stored at -20°C.

RefSeq: [NM\\_026598.3](#)

RefSeq Size: 2077 bp

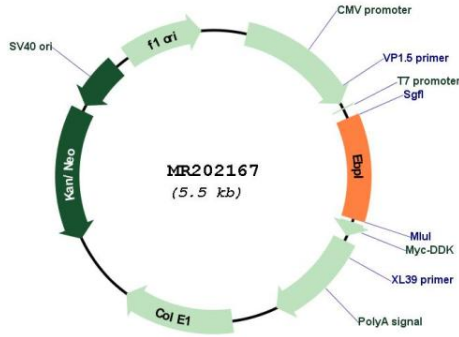
RefSeq ORF: 621 bp

Locus ID: 68177

UniProt ID: [Q9D0P0](#)

**Cytogenetics:** 14 D1  
**MW:** 23.3 kDa  
**Gene Summary:** Does not possess sterol isomerase activity and does not bind sigma ligands.  
 [UniProtKB/Swiss-Prot Function]

**Product images:**



Circular map for MR202167