

Product datasheet for MR202082

Cdca4 (BC012953) Mouse Tagged ORF Clone

Product data:

Product Type: Expression Plasmids
Product Name: Cdca4 (BC012953) Mouse Tagged ORF Clone
Tag: Myc-DDK
Symbol: Cdca4
Synonyms: 2410018C03Rik; HEPP; SEI-3
Mammalian Cell Selection: Neomycin
Vector: pCMV6-Entry (PS100001)
E. coli Selection: Kanamycin (25 ug/mL)
ORF Nucleotide Sequence: >MR202082 ORF sequence
 Red=Cloning site Blue=ORF Green=Tags(s)

TTTTGTAATACGACTCACTATAGGGCGCCGGGAATTCGTCGACTGGATCCGGTACCGAGGAGATCTGCC
 GCC**CGATCGCC**

ATGTCCTTGTCAAGCTCCAGCTCTGTCACATGCTAGTGGAGCCCAATCTCTGCCGCTCGGTCTCATCG
 CCAACACAGTCCGGCAGATCCAGGAGGAAATGAGCCAGGATGGTGTGGCATGGGATGGCACCCAGAA
 TGTAGATCGGGCACCAGTTGAGCGCCTGGTGTCCACAGAGATCCTGTGTCGTACAGTGAGGGGAGCTGAG
 GAAGAGCACCCCTGCTCCTGAAGTGAAGATGCTCCCTTGCAAACTCGGTTCCGAGCTCCCATCGTTG
 GCTCAGCACAGGCAAGGAACCTCAGAGCAGCCTCTGGGAGATGGACAGCCACAAGAAAACAGGGG
 AAGCTTTCAGAAGTCACTGGACCAGATATTTGAGACCCTGGAGAACAAAACCTCCAGTTCAGTGGAGGAA
 CTCTTCTCAGATGTGGACAGCTCCTACTATGACCTGGACACAGTGCTAACAGGAATGATGACTGGGACCA
 AGTCCAGTCTCTGCAATGGCCTTGAGGGCTTGTGTCAGCCGCCCTCCTCCAGTTCACCTTGCAAGTC
 TGACCTGGCTGAGCTGGACCATGTGGTAGAGATTCTGGTGGAGACC

ACGCGTACGCGGCCGCTCGAGCAGAACTCATCTCAGAAGAGGATCTGGCAGCAAATGATATCCTGGATT
 ACAAGGATGACGACGATAAGGTTTAA

Protein Sequence: >MR202082 protein sequence
 Red=Cloning site Green=Tags(s)

MSLVKLQLCHMLVEPNLCRSVLIANTVRQIQEEMSDGVWHGMAPQNVDRAPEVERLVSTELCRTVRGAE
 EEHPAPELEDAPLQNSVSELPVIGSAPGQRNPQSSLWEMDSPQENRGSFQKSLDQIFETLENKNSSSVEE
 LFSDDVSSYYDLDTVLTGMMTGTKSSLCNLEGFAAAAPPSSTCKSDLAEILDHVVEILVET

TRTRPLEQKLISEEDLAANDILDYKDDDDKV



[View online »](#)

Restriction Sites: SgfI-MluI

Cloning Scheme:



ACCN: BC012953

ORF Size: 606 bp

OTI Disclaimer: The molecular sequence of this clone aligns with the gene accession number as a point of reference only. However, individual transcript sequences of the same gene can differ through naturally occurring variations (e.g. polymorphisms), each with its own valid existence. This clone is substantially in agreement with the reference, but a complete review of all prevailing variants is recommended prior to use. [More info](#)

OTI Annotation: This clone was engineered to express the complete ORF with an expression tag. Expression varies depending on the nature of the gene.

Components: The ORF clone is ion-exchange column purified and shipped in a 2D barcoded Matrix tube containing 10ug of transfection-ready, dried plasmid DNA (reconstitute with 100 ul of water).

Reconstitution Method:

1. Centrifuge at 5,000xg for 5min.
2. Carefully open the tube and add 100ul of sterile water to dissolve the DNA.
3. Close the tube and incubate for 10 minutes at room temperature.
4. Briefly vortex the tube and then do a quick spin (less than 5000xg) to concentrate the liquid at the bottom.
5. Store the suspended plasmid at -20°C. The DNA is stable for at least one year from date of shipping when stored at -20°C.

RefSeq: [BC012953](#), [AAH12953](#)

RefSeq Size: 1856 bp

RefSeq ORF: 608 bp

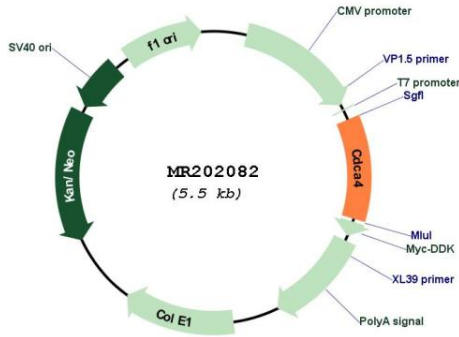
Locus ID: 71963

Cytogenetics: 12 F1

MW: 22.1 kDa

Gene Summary: May participate in the regulation of cell proliferation through the E2F/RB pathway (By similarity). May be involved in molecular regulation of hematopoietic stem cells and progenitor cell lineage commitment and differentiation.[UniProtKB/Swiss-Prot Function]

Product images:



Circular map for MR202082