

Product datasheet for MR201981

Sar1b (NM_025535) Mouse Tagged ORF Clone

Product data:

Product Type:	Expression Plasmids
Product Name:	Sar1b (NM_025535) Mouse Tagged ORF Clone
Tag:	Myc-DDK
Symbol:	Sar1b
Synonyms:	2310075M17Rik; 2900019I22Rik; CMRD; Sara1b; Sara2; Sarb
Mammalian Cell Selection:	Neomycin
Vector:	pCMV6-Entry (PS100001)
E. coli Selection:	Kanamycin (25 ug/mL)
ORF Nucleotide Sequence:	>MR201981 ORF sequence Red=Cloning site Blue=ORF Green=Tags(s)

TTTTGTAATACGACTCACTATAGGGCGGCCGGAATTCGTCGACTGGATCCGGTACCGAGGAGATCTGCC
GCC**CGATCGCC**

ATGTCCTTCATATTTGACTGGATTTACAGTGGTTTCAGCAGTGTGCTGCAGTTTCTAGGATTGTATAAAA
AGTCTGGTAAACTGGTATTCCTTGGATTGGATAATGCCGGGAAAACAACCTTGTACACATGCTGAAAGA
TGACAGGCTCGGGCAGCACGTCCAACGCTACATCCCCTCAGAAGAGCTTACTATTGCTGGCATGACG
TTTACAACCTTTGATCTGGTGGGCACGTGCAAGCCCGAAGAGTATGGAAAACTACCTTCTGCTATCA
ATGGCATTGTATTCTTGTGGATTGTGCAGACCATGAAAGGCTGTAGAATCAAAAAGAAGAACTTGATTC
ACTAATGACAGATGAAACCATTCGCAACGTGCCTATTCTAATTCTTGGAAATAAGATCGACAGACCTGAA
GCCATCAGTGAAGAGAGTTACGAGAGATGTTTGGTTTATATGGTCAGACAACAGGAAAGGTTAGTGTG
CACTGAAGGAGCTGAACGCCCGCCTCTGGAAGTGTTTCATGTGCAGTGTGCTAAAAGGCAGGGCTATGG
AGAAGGCTTCCGCTGGATGGCGCAGTACATCGAT

ACGCGTACGCGGCCGCTCGAGCAGAACTCATCTCAGAAGAGGATCTGGCAGCAATGATATCCTGGATT
ACAAGGATGACGACGATAAGGTTTAA

Protein Sequence:	>MR201981 protein sequence Red=Cloning site Green=Tags(s)
-------------------	--

MSFIFDWIYSGFSSVLQFLGLYKSGKLVFLGLDNAGKTTLLHMLKDDRLGQHVPTLHPTSEELTIAGMT
FTTDFLGGHVQARRVWKNYLPAINGI VFLVDCADHERLLESKEELDSLMTDETIANVPILILGNKIDRPE
AISEERLREMFGLYGQTTGKGSVSLKELNARPLEVFMCSVLKRQGYGEGFRWMAQYID

TRTRPLEQKLISEEDLAANDILDYKDDDDKV



[View online »](#)

Restriction Sites: SgfI-MluI

Cloning Scheme:



ACCN: NM_025535

ORF Size: 597 bp

OTI Disclaimer: The molecular sequence of this clone aligns with the gene accession number as a point of reference only. However, individual transcript sequences of the same gene can differ through naturally occurring variations (e.g. polymorphisms), each with its own valid existence. This clone is substantially in agreement with the reference, but a complete review of all prevailing variants is recommended prior to use. [More info](#)

OTI Annotation: This clone was engineered to express the complete ORF with an expression tag. Expression varies depending on the nature of the gene.

Components: The ORF clone is ion-exchange column purified and shipped in a 2D barcoded Matrix tube containing 10ug of transfection-ready, dried plasmid DNA (reconstitute with 100 ul of water).

- Reconstitution Method:**
1. Centrifuge at 5,000xg for 5min.
 2. Carefully open the tube and add 100ul of sterile water to dissolve the DNA.
 3. Close the tube and incubate for 10 minutes at room temperature.
 4. Briefly vortex the tube and then do a quick spin (less than 5000xg) to concentrate the liquid at the bottom.
 5. Store the suspended plasmid at -20°C. The DNA is stable for at least one year from date of shipping when stored at -20°C.

RefSeq: [NM_025535.2](#)

RefSeq Size: 1253 bp

RefSeq ORF: 597 bp

Locus ID: 66397

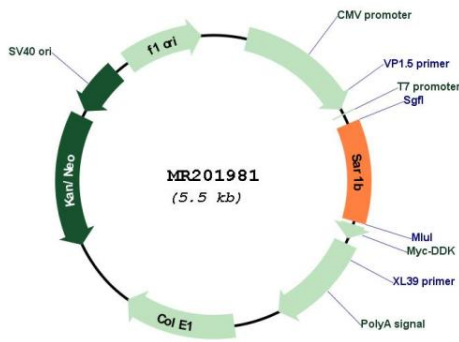
UniProt ID: [Q9CQC9](#)

Cytogenetics: 11 B1.3

MW: 22.4 kDa

Gene Summary: Involved in transport from the endoplasmic reticulum to the Golgi apparatus. Activated by the guanine nucleotide exchange factor PREB. Involved in the selection of the protein cargo and the assembly of the COPII coat complex.[UniProtKB/Swiss-Prot Function]

Product images:



Circular map for MR201981