

Product datasheet for MR201903

Lman2l (BC027226) Mouse Tagged ORF Clone

Product data:

Product Type: Expression Plasmids
Product Name: Lman2l (BC027226) Mouse Tagged ORF Clone
Tag: Myc-DDK
Symbol: Lman2l
Synonyms: VIPL, VIP36-like
Mammalian Cell Selection: Neomycin
Vector: pCMV6-Entry (PS100001)
E. coli Selection: Kanamycin (25 ug/mL)
ORF Nucleotide Sequence: >MR201903 representing BC027226
 Red=Cloning site Blue=ORF Green=Tags(s)

TTTTGTAATACGACTCACTATAGGGCGGCCGGAATTCGTCGACTGGATCCGGTACCGAGGAGATCTGCC
 GCCCGGATCGCC

ATGGAGACGGCTTGGCAATCTGGTACACAAAGGACCGAATGCAGCCAGCGGGTATCCCCTACATCTCAG
 CCATGGTGAACAACGGCTCCCTCAGCTATGATCACGAGCGGGATGGGCGGCTACAGAGCTGGGTGGCTG
 CACAGCCATTGTCGAAATATCCGTTATGACACCTTCTCGTGATTGCTATGTCAAGAGGCATCTGACG
 ATAATGATGGATATTGATGGCAAACATGAGTGGAGGGACTGCATTGAGATGCCCGGGTCCGGCTCCCC
 GGGGCTATTACTTCGGCACTTCTCCATTACTGGGGATCTCTCTGATAACCATGATGTCATTTCCCTCAA
 GTTGTGGAGCTGACTGGAGTGAGGACCCAGAAGAAGAAAAGCTACATCGAGATGTATTCTGCCCTCG
 GTGGACAATCTGAAGCTGCCAGAGATGACAGTGCCACCAACGCCCTGAGTGGCCTGGCTCTTCTCTTA
 TTGTCTTCTTCTCCTTGGTGTTCGATTTGCCATTGTATCGGGATCATACTCTACAACAAATGGCA
 AGACCAGAGCCGAAACGCTTCTAC

ACGCGTACGCGGCCGCTCGAGCAGAACTCATCTCAGAAGAGGATCTGGCAGCAATGATATCCTGGATT
 ACAAGGATGACGACGATAAGGTTTAA

Protein Sequence: >MR201903 representing BC027226
 Red=Cloning site Green=Tags(s)

METAWQSGTQRTECSQRFVPIYSAMVNNGLSYDHERDGRPELGGCTAIVRNIRYDTFLVIRYVKRHLT
 IMMDIDGKHEWRDCIEMPGVRLPRGYFYTSSITGDLSDNHVDVLSLKFELTGVRTPEEEKLHRDVFLPS
 VDNLKLPEMTVPPTPLSGLALFLIVFFSLVFSVFAIVIGIILYNKWQDQSRKRFY

TRTRPLEQKLISEEDLAANDILDYKDDDDKV

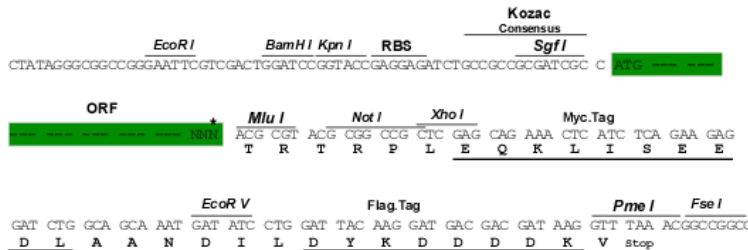
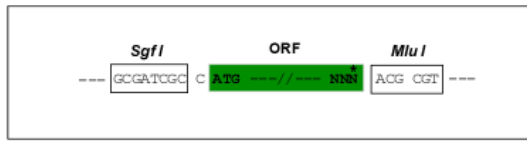


[View online »](#)

Restriction Sites: SgfI-MluI

Cloning Scheme:

Cloning sites used for ORF Shutting:



* The last codon before the Stop codon of the ORF

ACCN: BC027226

ORF Size: 585 bp

OTI Disclaimer: The molecular sequence of this clone aligns with the gene accession number as a point of reference only. However, individual transcript sequences of the same gene can differ through naturally occurring variations (e.g. polymorphisms), each with its own valid existence. This clone is substantially in agreement with the reference, but a complete review of all prevailing variants is recommended prior to use. [More info](#)

OTI Annotation: This clone was engineered to express the complete ORF with an expression tag. Expression varies depending on the nature of the gene.

Components: The ORF clone is ion-exchange column purified and shipped in a 2D barcoded Matrix tube containing 10ug of transfection-ready, dried plasmid DNA (reconstitute with 100 ul of water).

Reconstitution Method:

1. Centrifuge at 5,000xg for 5min.
2. Carefully open the tube and add 100ul of sterile water to dissolve the DNA.
3. Close the tube and incubate for 10 minutes at room temperature.
4. Briefly vortex the tube and then do a quick spin (less than 5000xg) to concentrate the liquid at the bottom.
5. Store the suspended plasmid at -20°C. The DNA is stable for at least one year from date of shipping when stored at -20°C.

RefSeq: [BC027226.1](#)

RefSeq Size: 2199 bp

RefSeq ORF: 587 bp

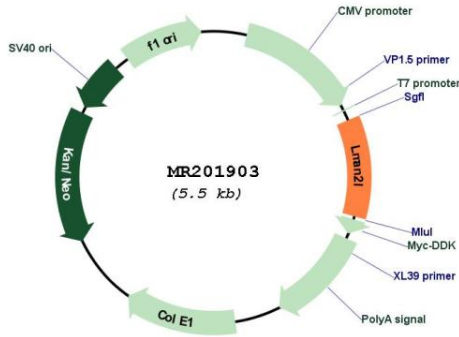
Locus ID: 214895

Cytogenetics: 1 B

MW: 80.6 kDa

Gene Summary: May be involved in the regulation of export from the endoplasmic reticulum of a subset of glycoproteins. May function as a regulator of ERGIC-53 (By similarity).[UniProtKB/Swiss-Prot Function]

Product images:



Circular map for MR201903