

Product datasheet for **MR201884**

PPP1R1B (NM_144828) Mouse Tagged ORF Clone

Product data:

Product Type: Expression Plasmids
Product Name: Ppp1r1b (NM_144828) Mouse Tagged ORF Clone
Tag: Myc-DDK
Symbol: Ppp1r1b
Synonyms: AU040756; Dar; DARP; DARPP-32; Darpp32
Mammalian Cell Selection: Neomycin
Vector: pCMV6-Entry (PS100001)
E. coli Selection: Kanamycin (25 ug/mL)
ORF Nucleotide Sequence: >MR201884 ORF sequence
 Red=Cloning site Blue=ORF Green=Tags(s)

TTTTGTAATACGACTCACTATAGGGCGGCCGGAATTCGTCGACTGGATCCGGTACCGAGGAGATCTGCC
GCC**CGATCGCC**

ATGGACCCCAAGGACCGCAAGAAGATTCAGTTCTCTGTGCCCGGCCCGGAGCCAGCTCGACCCCGAC
AGGTGGAGATGATCCGGCGCCGGAGACCAACCCCTGCCATGCTTTCCGGGTCTCAGAGCACTCCTCACC
AGAGGAGGAGGCCTCTCCACATCAGAGAACCTCTGGAGAGGGGCACCACCCAAAGTCGAAGAGACCAAC
CCCTGTGCCTATACGCCCCATCACTGAAAGCTGTGCAGCACCTGCAGACCATTAGCAACTTGAGTGAGA
ACCAGGCCTCGGAGGAAGAGGATGAGTTAGGGGAGCTTCGGGAGCTTGGGTACCCACAGGAGGATGATGA
GGAGGATGAGGATGAAGAGGAGGACGAAGAAGAAGACAGCCAGGCGGAGGTCCTGAAAGGCAGCAGGGGC
ACTGTGGGGCAGAAGCCTACTTGTGGCCGGGTCTGGAGGGGCCCTGGGAGCGCCCACTCCTCTGGATG
AGCCCCAGAGAGATGAAACTCTGAGGACCAAGTGAAGGCAGAGCAACACTAAGTGAGCCTGGAGAGGA
ACCTCAGCATCCAGCCCCCCC

ACGCGTACGCGGCCGCTCGAGCAGAACTCATCTCAGAAGAGGATCTGGCAGCAATGATATCCTGGATT
ACAAGGATGACGACGATAAGGTTTAA

Protein Sequence: >MR201884 protein sequence
 Red=Cloning site Green=Tags(s)

MDPKDRKKIQFSVPAPPSQLDPRQVEMIRRRRPTPAMLFVSEHSSPEEEASPHQRTSGEGHHPKSKRPN
PCAYTPPSLKAQHLQTI SNLSENQASEEDELGELRELGYQEDDEEDEDDEEEDSQAQEVLLKGSRG
TVGQKPTCGRGLGEPWERPPPLDEPQRDGNSEDQVEGRATLSEPGEEPQHPSPP

TRTRPLEQKLISEEDLAANDILDYKDDDDKV



[View online »](#)

Restriction Sites: SgfI-MluI

Cloning Scheme:



ACCN: NM_144828

ORF Size: 585 bp

OTI Disclaimer: The molecular sequence of this clone aligns with the gene accession number as a point of reference only. However, individual transcript sequences of the same gene can differ through naturally occurring variations (e.g. polymorphisms), each with its own valid existence. This clone is substantially in agreement with the reference, but a complete review of all prevailing variants is recommended prior to use. [More info](#)

OTI Annotation: This clone was engineered to express the complete ORF with an expression tag. Expression varies depending on the nature of the gene.

Components: The ORF clone is ion-exchange column purified and shipped in a 2D barcoded Matrix tube containing 10ug of transfection-ready, dried plasmid DNA (reconstitute with 100 ul of water).

- Reconstitution Method:
1. Centrifuge at 5,000xg for 5min.
 2. Carefully open the tube and add 100ul of sterile water to dissolve the DNA.
 3. Close the tube and incubate for 10 minutes at room temperature.
 4. Briefly vortex the tube and then do a quick spin (less than 5000xg) to concentrate the liquid at the bottom.
 5. Store the suspended plasmid at -20°C. The DNA is stable for at least one year from date of shipping when stored at -20°C.

RefSeq: [NM_144828.2](#)

RefSeq Size: 1682 bp

RefSeq ORF: 585 bp

Locus ID: 19049

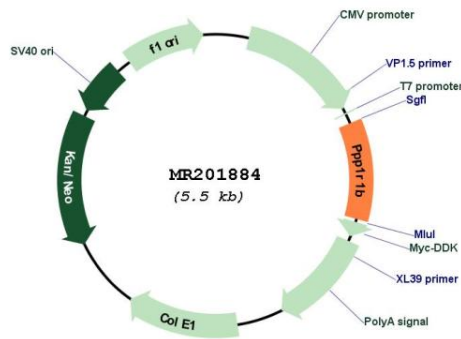
UniProt ID: [Q60829](#)

Cytogenetics: 11 D

MW: 21.8 kDa

Gene Summary: This gene encodes a bifunctional signal transduction molecule. Dopaminergic and glutamatergic receptor stimulation regulates its phosphorylation and function as a kinase or phosphatase inhibitor. As a target for dopamine, this gene may serve as a therapeutic target for neurologic and psychiatric disorders in humans. Two transcript variants encoding different isoforms have been found for this gene. [provided by RefSeq, Sep 2015]

Product images:



Circular map for MR201884