

Product datasheet for MR201738L3

Arl6 (NM_019665) Mouse Tagged Lenti ORF Clone

Product data:

Product Type:	Expression Plasmids
Product Name:	Arl6 (NM_019665) Mouse Tagged Lenti ORF Clone
Tag:	Myc-DDK
Symbol:	Arl6
Synonyms:	1110018H24Rik; 2210411E14Rik; BBS3
Mammalian Cell Selection:	Puromycin
Vector:	pLenti-C-Myc-DDK-P2A-Puro (PS100092)
E. coli Selection:	Chloramphenicol (34 ug/mL)
ORF Nucleotide Sequence:	The ORF insert of this clone is exactly the same as(MR201738).
Restriction Sites:	SgfI-MluI
Cloning Scheme:	

Cloning sites used for ORF Shuttling:



* The last codon before the Stop codon of the ORF.

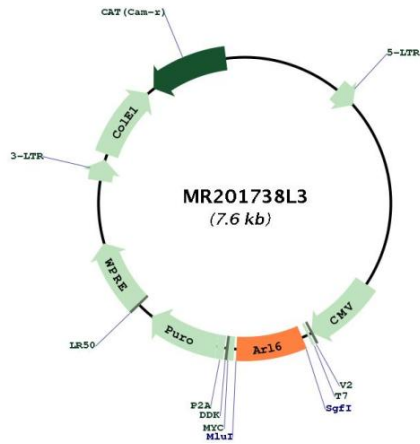
ACCN:	NM_019665
ORF Size:	561 bp



[View online »](#)

OTI Disclaimer:	The molecular sequence of this clone aligns with the gene accession number as a point of reference only. However, individual transcript sequences of the same gene can differ through naturally occurring variations (e.g. polymorphisms), each with its own valid existence. This clone is substantially in agreement with the reference, but a complete review of all prevailing variants is recommended prior to use. More info
OTI Annotation:	This clone was engineered to express the complete ORF with an expression tag. Expression varies depending on the nature of the gene.
Components:	The ORF clone is ion-exchange column purified and shipped in a 2D barcoded Matrix tube containing 10ug of transfection-ready, dried plasmid DNA (reconstitute with 100 ul of water).
Reconstitution Method:	<ol style="list-style-type: none">1. Centrifuge at 5,000xg for 5min.2. Carefully open the tube and add 100ul of sterile water to dissolve the DNA.3. Close the tube and incubate for 10 minutes at room temperature.4. Briefly vortex the tube and then do a quick spin (less than 5000xg) to concentrate the liquid at the bottom.5. Store the suspended plasmid at -20°C. The DNA is stable for at least one year from date of shipping when stored at -20°C.
RefSeq:	NM_019665.2 , NP_062639.2
RefSeq Size:	1512 bp
RefSeq ORF:	561 bp
Locus ID:	56297
UniProt ID:	O88848
Cytogenetics:	16 C1.3
Gene Summary:	Involved in membrane protein trafficking at the base of the ciliary organelle (By similarity). Mediates recruitment onto plasma membrane of the BBSome complex which would constitute a coat complex required for sorting of specific membrane proteins to the primary cilia (By similarity). Together with BBS1, is necessary for correct trafficking of PKD1 to primary cilia (PubMed:24939912). Together with the BBSome complex and LTZL1, controls SMO ciliary trafficking and contributes to the sonic hedgehog (SHH) pathway regulation (By similarity). May regulate cilia assembly and disassembly and subsequent ciliary signaling events such as the Wnt signaling cascade (By similarity). Isoform 2 may be required for proper retinal function and organization (PubMed:20333246).[UniProtKB/Swiss-Prot Function]

Product images:



Circular map for MR201738L3