

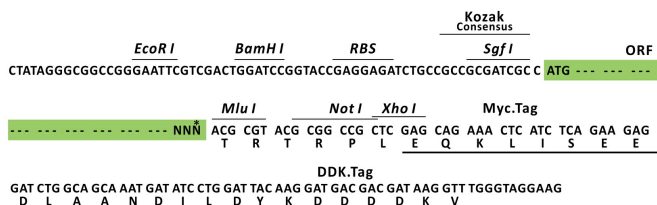
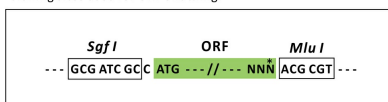
Product datasheet for MR201651L3

9430016H08Rik (BC024945) Mouse Tagged Lenti ORF Clone

Product data:

Product Type:	Expression Plasmids
Tag:	Myc-DDK
Symbol:	9430016H08Rik
Synonyms:	AA409999; C78988
Mammalian Cell Selection:	Puromycin
Vector:	pLenti-C-Myc-DDK-P2A-Puro (PS100092)
E. coli Selection:	Chloramphenicol (34 ug/mL)
ORF Nucleotide Sequence:	The ORF insert of this clone is exactly the same as(MR201651).
Restriction Sites:	SgfI-MluI
Cloning Scheme:	

Cloning sites used for ORF Shuttling:

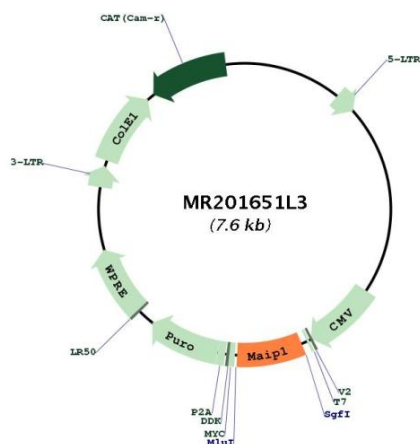


* The last codon before the Stop codon of the ORF.

ACCN:	BC024945
ORF Size:	546 bp



OTI Disclaimer:	The molecular sequence of this clone aligns with the gene accession number as a point of reference only. However, individual transcript sequences of the same gene can differ through naturally occurring variations (e.g. polymorphisms), each with its own valid existence. This clone is substantially in agreement with the reference, but a complete review of all prevailing variants is recommended prior to use. More info
OTI Annotation:	This clone was engineered to express the complete ORF with an expression tag. Expression varies depending on the nature of the gene.
Components:	The ORF clone is ion-exchange column purified and shipped in a 2D barcoded Matrix tube containing 10ug of transfection-ready, dried plasmid DNA (reconstitute with 100 ul of water).
Reconstitution Method:	<ol style="list-style-type: none"> 1. Centrifuge at 5,000xg for 5min. 2. Carefully open the tube and add 100ul of sterile water to dissolve the DNA. 3. Close the tube and incubate for 10 minutes at room temperature. 4. Briefly vortex the tube and then do a quick spin (less than 5000xg) to concentrate the liquid at the bottom. 5. Store the suspended plasmid at -20°C. The DNA is stable for at least one year from date of shipping when stored at -20°C.
Note:	Plasmids are not sterile. For experiments where strict sterility is required, filtration with 0.22um filter is required.
RefSeq:	BC024945 , AAH24945
RefSeq Size:	839 bp
RefSeq ORF:	548 bp
Locus ID:	68115
Cytogenetics:	1 C1.3
Gene Summary:	Promotes sorting of SMDT1/EMRE in mitochondria by ensuring its maturation. Interacts with the transit peptide region of SMDT1/EMRE precursor protein in the mitochondrial matrix, leading to protect it against protein degradation by YME1L1, thereby ensuring SMDT1/EMRE maturation by the mitochondrial processing peptidase (PMPCA and PMPCB).[UniProtKB/Swiss-Prot Function]

Product images:

Circular map for MR201651L3