

Product datasheet for MR201609

Sit1 (NM_019436) Mouse Tagged ORF Clone

Product data:

Product Type: Expression Plasmids
Product Name: Sit1 (NM_019436) Mouse Tagged ORF Clone
Tag: Myc-DDK
Symbol: Sit1
Synonyms: Sit
Mammalian Cell Selection: Neomycin
Vector: pCMV6-Entry (PS100001)
E. coli Selection: Kanamycin (25 ug/mL)
ORF Nucleotide Sequence: >MR201609 ORF sequence
 Red=Cloning site Blue=ORF Green=Tags(s)

TTTTGTAATACGACTCACTATAGGGCGCCGGGAATTCGTCGACTGGATCCGGTACCGAGGAGATCTGCC
 GCC**CGATCGCC**

ATGAGCAGAGATTACAACTGTACCACTGACGATCAACTCGCATGGGGGATCCCCTCCATAAGCCACGCGT
 GGGGACTGTGGGCCCTCTTAGGAGTTGTGACGGTGCTGCTTCTCATCTCATTGGCTGCACTCTTGCCCA
 GTGGACCCGTGGTCGGAGAAGGAACCAGGAGGGACAGGGACCACTCTCCGGAAGTCCGCGGAAGAAGTT
 CCCCTGTATGGCAACCTGCACTATTTACAGACAGGTGGCTGTCTCAAGAACCAAGGTCAGAAGAGCAGG
 ACCCACCATCCTCTGGAGGCCTTGCCAGGGGGCGGAGGAGGCCATGTGCTACTAGCCTGCAGCTGCG
 ACCAGCTCAAGGTCGGATCCCCAGCTCTGGAAACCCATCAAGTACTGTGAGGTGGTGGTGGACTCTGAG
 CCAAAGCCCCAGGCCCCAGGCCCTGAGCCGGAACCTTTATGCCTCCGTGTGCCCAGACCCGAGAGGCC
 GGGCTTCTTCCAGATCAAGCCTATGCCAACAGCCAGCCTGCACCCAGC

AG**CGGACCG**ACGCGTACGCGCCGCTCGAGCAGAAACTCATCTCAGAAGAGGATCTGGCAGCAAATGATATCC
 TGGATTACAAGGATGACGACGATAAGGTTTAA

Protein Sequence: >MR201609 protein sequence
 Red=Cloning site Green=Tags(s)

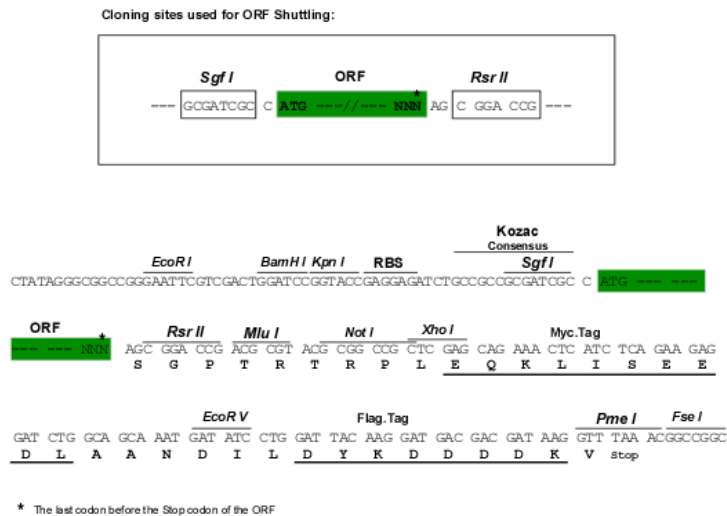
MSRDYNCTDDQLAWGIPISISHAWGLWALLGVVTVLLLISLAALLSQWTRGRRRNQEGQGPLSGRSAEEV
 PLYGNLHYLQTGRLSQEPRSEEQDPPSSGGLARGAEEAMCYTSLQLRPAQGRIPSSGNPIKYCEVVLDS
 PKPQAPGPEPELYASVCAQTRRGRASFPDQAYANSQPAPS

SGPTRTRPLEQKLISEEDLAANDILDYKDDDDKV

Restriction Sites: Sgfl-RsrII



[View online »](#)

Cloning Scheme:


ACCN: NM_019436

ORF Size: 543 bp

OTI Disclaimer: The molecular sequence of this clone aligns with the gene accession number as a point of reference only. However, individual transcript sequences of the same gene can differ through naturally occurring variations (e.g. polymorphisms), each with its own valid existence. This clone is substantially in agreement with the reference, but a complete review of all prevailing variants is recommended prior to use. [More info](#)

OTI Annotation: This clone was engineered to express the complete ORF with an expression tag. Expression varies depending on the nature of the gene.

Components: The ORF clone is ion-exchange column purified and shipped in a 2D barcoded Matrix tube containing 10ug of transfection-ready, dried plasmid DNA (reconstitute with 100 ul of water).

- Reconstitution Method:**
1. Centrifuge at 5,000xg for 5min.
 2. Carefully open the tube and add 100ul of sterile water to dissolve the DNA.
 3. Close the tube and incubate for 10 minutes at room temperature.
 4. Briefly vortex the tube and then do a quick spin (less than 5000xg) to concentrate the liquid at the bottom.
 5. Store the suspended plasmid at -20°C. The DNA is stable for at least one year from date of shipping when stored at -20°C.

RefSeq: [NM_019436.3](#), [NP_062309.2](#)

RefSeq Size: 1201 bp

RefSeq ORF: 543 bp

Locus ID: 54390

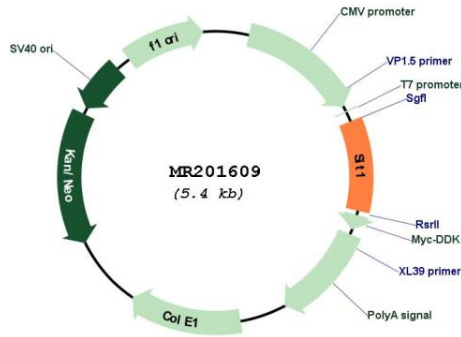
UniProt ID: [Q8C503](#)

Cytogenetics: 4 A5

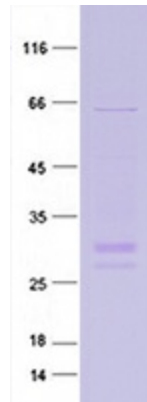
MW: 19.6 kDa

Gene Summary: Negatively regulates T-cell antigen receptor (TCR)-mediated signaling. Involved in positive selection of T-cells.[UniProtKB/Swiss-Prot Function]

Product images:



Circular map for MR201609



Coomassie blue staining of purified Sit1 protein (Cat# [TP501609]). The protein was produced from HEK293T cells transfected with Sit1 cDNA clone (Cat# MR201609) using MegaTran 2.0 (Cat# [TT210002]).