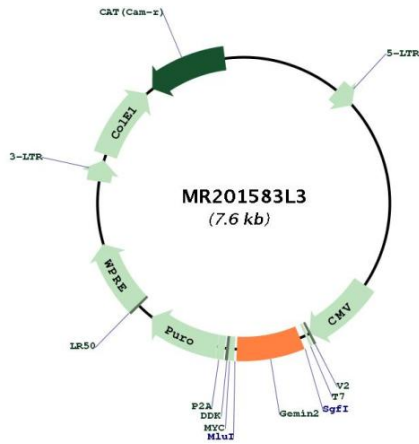




<b>OTI Disclaimer:</b>	The molecular sequence of this clone aligns with the gene accession number as a point of reference only. However, individual transcript sequences of the same gene can differ through naturally occurring variations (e.g. polymorphisms), each with its own valid existence. This clone is substantially in agreement with the reference, but a complete review of all prevailing variants is recommended prior to use. <a href="#">More info</a>
<b>OTI Annotation:</b>	This clone was engineered to express the complete ORF with an expression tag. Expression varies depending on the nature of the gene.
<b>Components:</b>	The ORF clone is ion-exchange column purified and shipped in a 2D barcoded Matrix tube containing 10ug of transfection-ready, dried plasmid DNA (reconstitute with 100 ul of water).
<b>Reconstitution Method:</b>	<ol style="list-style-type: none"><li>1. Centrifuge at 5,000xg for 5min.</li><li>2. Carefully open the tube and add 100ul of sterile water to dissolve the DNA.</li><li>3. Close the tube and incubate for 10 minutes at room temperature.</li><li>4. Briefly vortex the tube and then do a quick spin (less than 5000xg) to concentrate the liquid at the bottom.</li><li>5. Store the suspended plasmid at -20°C. The DNA is stable for at least one year from date of shipping when stored at -20°C.</li></ol>
<b>RefSeq:</b>	<a href="#">BC053424</a> , <a href="#">AAH53424</a>
<b>RefSeq Size:</b>	2064 bp
<b>RefSeq ORF:</b>	536 bp
<b>Locus ID:</b>	66603
<b>Cytogenetics:</b>	12 C1
<b>Gene Summary:</b>	This gene encodes one of the proteins found in the survival of motor neuron (SMN) complex, which consists of the SMN protein and several gemin proteins. The SMN complex is localized to a subnuclear compartment called gems (gemini of coiled bodies) and is required for assembly of spliceosomal small nuclear ribonucleoproteins (snRNP) and for pre-mRNA splicing. This protein interacts directly with the SMN protein and it is required for formation of the SMN complex. Disruption of this gene in mouse resulted in impaired snRNP assembly, and motor neuron degeneration. [provided by RefSeq, Sep 2015]

Product images:



Circular map for MR201583L3