

## Product datasheet for MR201510

### Reep6 (BC029741) Mouse Tagged ORF Clone

#### Product data:

**Product Type:** Expression Plasmids  
**Product Name:** Reep6 (BC029741) Mouse Tagged ORF Clone  
**Tag:** Myc-DDK  
**Symbol:** Reep6  
**Synonyms:** 0610011M24Rik; Dp111  
**Mammalian Cell Selection:** Neomycin  
**Vector:** pCMV6-Entry (PS100001)  
**E. coli Selection:** Kanamycin (25 ug/mL)  
**ORF Nucleotide Sequence:** >MR201510 ORF sequence  
 Red=Cloning site Blue=ORF Green=Tags(s)

TTTTGTAATACGACTCACTATAGGGCGCCGGGAATTCGTCGACTGGATCCGGTACCGAGGAGATCTGCC  
 GCC**CGATCGCC**

ATGGACGGTCTGCGCCAGCGCTTCGAACGTTTTCTGGAACAGAAGAACGTGGCCACCGAAGCGCTCGGGG  
 CGCTCGAAGCAAGGACCGGTGTAGAGAAGCGGTATCTCGCCGCGGGAGCCCTCGCCCTTCTAGGCCGTGA  
 TCTTCTGTTCCGGTACGGGGCTCTCTACTGTGCAATGTCATCGGATTTGTATACCCCGCATATGCTTCA  
 GTCAAAGCTATCGAGAGCCAAGCAAGGAAGACGACACTGTGTGGCTAACCTACTGGGTGGTGTACGCC  
 TGTTCCGTCTGGTGAATTCTTCAGCGATCTACTCCTGTTCTGGTCCCTTCTACTACGCGGGCAAGTG  
 CGCCTTCTGTTATTTTGCATGACGCCCGACCTGGAACGGGGCATTACTACTATACCATCGCGTCATA  
 AGACCACTCTTTCTAAAGCACCACATGGCTCTAGACAGCGCCGCGAGCCAGCTAAGCGGAAGAGCATTGG  
 ACCTAGCAGCTGGGATAACCCGGGACGCCAAG

**ACGCGT**ACGCGGCCGCTCGAGCAGAACTCATCTCAGAAGAGGATCTGGCAGCAAATGATATCCTGGATT  
 ACAAGGATGACGACGATAAGGTTTAA

**Protein Sequence:** >MR201510 protein sequence  
 Red=Cloning site Green=Tags(s)

MDGLRQRFERFLEQKNVATEALGALEARTGVEKRYLAAGALALLGLYLLFGYGASLLCNVIGFVYPAYAS  
 VKAIESPSKEDDTVWLYWVYALFGLVEFFSDLLLFWFPFYAGKCAFLLCMTPGPWNGALLYHRVI  
 RPLFLKHHMALDSAASQLSGRALDLAAGITRDAK

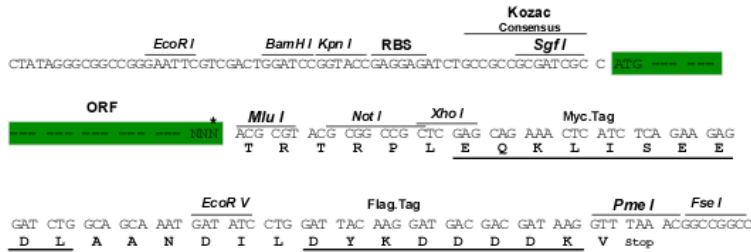
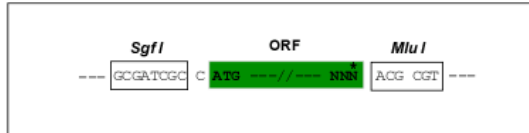
**TR**TRPLEQKLISEEDLAANDILDYKDDDDKV

**Restriction Sites:** Sgfl-MluI



**Cloning Scheme:**

Cloning sites used for ORF Shuttling:


**ACCN:** BC029741

**ORF Size:** 522 bp

**OTI Disclaimer:** The molecular sequence of this clone aligns with the gene accession number as a point of reference only. However, individual transcript sequences of the same gene can differ through naturally occurring variations (e.g. polymorphisms), each with its own valid existence. This clone is substantially in agreement with the reference, but a complete review of all prevailing variants is recommended prior to use. [More info](#)
**OTI Annotation:** This clone was engineered to express the complete ORF with an expression tag. Expression varies depending on the nature of the gene.

**Components:** The ORF clone is ion-exchange column purified and shipped in a 2D barcoded Matrix tube containing 10ug of transfection-ready, dried plasmid DNA (reconstitute with 100 ul of water).

**Reconstitution Method:**

1. Centrifuge at 5,000xg for 5min.
2. Carefully open the tube and add 100ul of sterile water to dissolve the DNA.
3. Close the tube and incubate for 10 minutes at room temperature.
4. Briefly vortex the tube and then do a quick spin (less than 5000xg) to concentrate the liquid at the bottom.
5. Store the suspended plasmid at -20°C. The DNA is stable for at least one year from date of shipping when stored at -20°C.

**RefSeq:** [BC029741](#), [AAH29741](#)
**RefSeq Size:** 1949 bp

**RefSeq ORF:** 524 bp

**Locus ID:** 70335

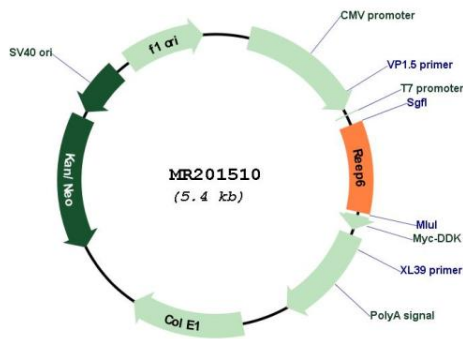
**Cytogenetics:** 10 C1

**MW:** 19.4 kDa

**Gene Summary:**

Required for correct function and survival of retinal photoreceptors (PubMed:24098485, PubMed:24691551, PubMed:28475715). Required for retinal development (PubMed:28369466). In rod photoreceptors, facilitates stability and/or trafficking of guanylate cyclases and is required to maintain endoplasmic reticulum and mitochondrial homeostasis (PubMed:28475715). May play a role in clathrin-coated intracellular vesicle trafficking of proteins from the endoplasmic reticulum to the retinal rod plasma membrane (PubMed:24098485, PubMed:28369466).[UniProtKB/Swiss-Prot Function]

**Product images:**



Circular map for MR201510