

Product datasheet for MR201509

Wrb (NM_207301) Mouse Tagged ORF Clone

Product data:

Product Type: Expression Plasmids
Product Name: Wrb (NM_207301) Mouse Tagged ORF Clone
Tag: Myc-DDK
Symbol: Wrb
Synonyms: 5530402J05Rik; C030018G21Rik; Chd5
Mammalian Cell Selection: Neomycin
Vector: pCMV6-Entry (PS100001)
E. coli Selection: Kanamycin (25 ug/mL)
ORF Nucleotide Sequence: >MR201509 ORF sequence
 Red=Cloning site Blue=ORF Green=Tags(s)

TTTTGTAATACGACTCACTATAGGGCGCCGGGAATTCGTCGACTGGATCCGGTACCGAGGAGATCTGCC
 GCC**CGATCGCC**

ATGAGCGCGTCCGAGACGGACCGCTGGCGTGGCTGCTGGTGTGAGCTTCGTGTTCCGGGTGTAACCTGC
 TGCATCCTCCTGCCGTCCTGTCCGTTTATTTCCAGGGTGTGCAGAAGGATGCAGAGCAGGAGTC
 ACAGATGAGGGCAGAGATCCAGGGCATGAAGCAGGAGCTGTCCACCGTCAACATGATGGACGAGTTTGC
 AGATACGCCAGGCTGAAAGGAAGATCAACAAGATGACGGACAAGCTCAAACGCACGTGAAGGCACGGA
 CAGCTCAGTTGGCAAGATCAAGTGGTTTATAAGTGTGCTTTCTACATACTACAAGCAGCGCTGATGAT
 CTCGCTCATTGGAAGTATTACTCCGTCCTGTGGCTGTGGTGGCCAGCAAGTGGATCACCCCACTAGAC
 CGCCTGGTAGCCTTTCCTACTCGAGTAGCAGGTGGAATTGGAATCACCTGTTGGATTTAGTCTGTAACA
 AAGTTGTGGCTATCGTTCTCCACCTTTTCAGC

ACGCGTACGCGGCCGCTCGAGCAGAACTCATCTCAGAAGAGGATCTGGCAGCAAATGATATCCTGGATT
 ACAAGGATGACGACGATAAGGTTTAA

Protein Sequence: >MR201509 protein sequence
 Red=Cloning site Green=Tags(s)

MSASETDRWALLVLSFVFGCNLLRILLPSLSSFISRVLQKDAEQESQMRAEIQGMKQELSTVNMMEFA
 RYARLERKINKMTDKLTHVKARTAQLAKIKWFISVAFYILQAALMISLIWKYYSVPVAVVPSKWITPLD
 RLVAFPTRVAGGIGITCWILVCNKVVAIVLHPFS

TRTRPLEQKLISEEDLAANDILDYKDDDDKV

Restriction Sites: Sgfl-MluI



Cloning Scheme:


ACCN: NM_207301

ORF Size: 525 bp

OTI Disclaimer: The molecular sequence of this clone aligns with the gene accession number as a point of reference only. However, individual transcript sequences of the same gene can differ through naturally occurring variations (e.g. polymorphisms), each with its own valid existence. This clone is substantially in agreement with the reference, but a complete review of all prevailing variants is recommended prior to use. [More info](#)

OTI Annotation: This clone was engineered to express the complete ORF with an expression tag. Expression varies depending on the nature of the gene.

Components: The ORF clone is ion-exchange column purified and shipped in a 2D barcoded Matrix tube containing 10ug of transfection-ready, dried plasmid DNA (reconstitute with 100 ul of water).

Reconstitution Method:

1. Centrifuge at 5,000xg for 5min.
2. Carefully open the tube and add 100ul of sterile water to dissolve the DNA.
3. Close the tube and incubate for 10 minutes at room temperature.
4. Briefly vortex the tube and then do a quick spin (less than 5000xg) to concentrate the liquid at the bottom.
5. Store the suspended plasmid at -20°C. The DNA is stable for at least one year from date of shipping when stored at -20°C.

RefSeq: [NM_207301.3](#)

RefSeq Size: 2483 bp

RefSeq ORF: 525 bp

Locus ID: 71446

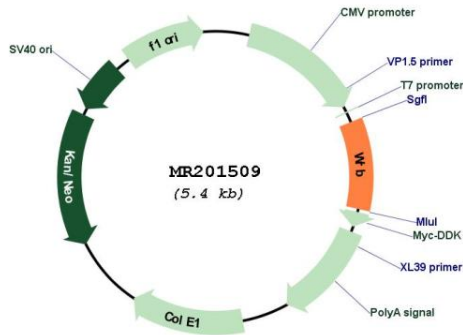
UniProt ID: [Q8K0D7](#)

Cytogenetics: 16 C4

MW: 19.9 kDa

Gene Summary: Receptor for ASNA1/TRC40-mediated insertion of tail-anchored (TA) proteins into the ER membrane.[UniProtKB/Swiss-Prot Function]

Product images:



Circular map for MR201509