

Product datasheet for MR201508

1700037H04Rik (NM_026091) Mouse Tagged ORF Clone

Product data:

Product Type: Expression Plasmids
Product Name: 1700037H04Rik (NM_026091) Mouse Tagged ORF Clone
Tag: Myc-DDK
Symbol: 1700037H04Rik
Synonyms: RP23-32L15.2
Mammalian Cell Selection: Neomycin
Vector: pCMV6-Entry (PS100001)
E. coli Selection: Kanamycin (25 ug/mL)
ORF Nucleotide Sequence: >MR201508 ORF sequence
 Red=Cloning site Blue=ORF Green=Tags(s)

TTTTGTAATACGACTCACTATAGGGCGCCGGGAATTCGTCGACTGGATCCGGTACCGAGGAGATCTGCC
 GCC**CGATCGCC**

ATGGCTGCAGCCAACAGAGGCAGTAAGCCAGAGTCCGAAGTATCCGCTTGCAGCAGGCCACGATGCAG
 AAGGCTCCAGAGCCACGTCCACTTTGATGAAAAGCTGCATGACTCGGTGGTCATGGTTACTCAGGAGAG
 TGACAACAGCTTCTTAGTCAAGTTGGCTTCTGAAGATCCTGCACAGGTATGAGATTACCTTCACTCTG
 CCTCCAGTGCCGAGACTGAGCAAGGACATCCGTGAGACCCCTGTCCACAGCTTGCACCTCAAGCTGCTCA
 GCGTCACACCCACCTCTGAAGTTACAGCATCAAGTGTGAGTACTCGGCACACAAAGAAGGTGTTCTCAA
 AGAGGAGATGCTCCTGGCCTGCGAGGGTACATAGGCACCTGTGTGCGTGTGACGGTGCAGGCGCGGGTC
 ATGGACCGGCACACCGGTACACCCATGCTGCTGGATGGTGTCAAGTGTGTGGGCGCTGAGCTGGAGTATG
 ACTCGGAACAGAGCGATTGGCTCGGCTTCGAC

ACGCGTACGCGGCCGCTCGAGCAGAACTCATCTCAGAAGAGGATCTGGCAGCAAATGATATCCTGGATT
 ACAAGGATGACGACGATAAGGTTTAA

Protein Sequence: >MR201508 protein sequence
 Red=Cloning site Green=Tags(s)

MAAANRGSKPRVRSIRFAAGHDAEGSQSHVHFDEKLHDSVVMVTQESDNSFLVKVGFLLKILHRYEITFTL
 PPVRRLSKDIRETPVHSLHLKLLSVTPTSEGYSIKCEYSAHKEGVLKEEMLLACEGDIIGTCVRVTVQARV
 MDRHHGTPMLLDGVKCVGAELEYDSEQSDWLGFD

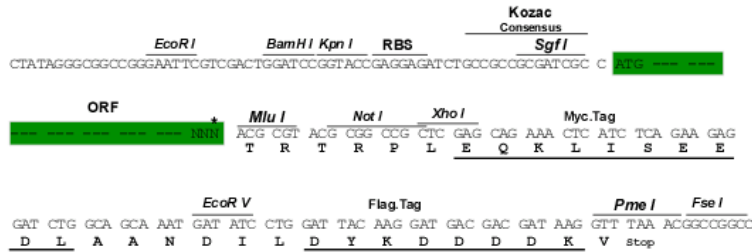
TRTRPLEQKLISEEDLAANDILDYKDDDDKV

Restriction Sites: Sgfl-MluI



Cloning Scheme:

Cloning sites used for ORF Shutting:



* The last codon before the Stop codon of the ORF

ACCN: NM_026091

ORF Size: 525 bp

OTI Disclaimer: The molecular sequence of this clone aligns with the gene accession number as a point of reference only. However, individual transcript sequences of the same gene can differ through naturally occurring variations (e.g. polymorphisms), each with its own valid existence. This clone is substantially in agreement with the reference, but a complete review of all prevailing variants is recommended prior to use. [More info](#)

OTI Annotation: This clone was engineered to express the complete ORF with an expression tag. Expression varies depending on the nature of the gene.

Components: The ORF clone is ion-exchange column purified and shipped in a 2D barcoded Matrix tube containing 10ug of transfection-ready, dried plasmid DNA (reconstitute with 100 ul of water).

Reconstitution Method:

1. Centrifuge at 5,000xg for 5min.
2. Carefully open the tube and add 100ul of sterile water to dissolve the DNA.
3. Close the tube and incubate for 10 minutes at room temperature.
4. Briefly vortex the tube and then do a quick spin (less than 5000xg) to concentrate the liquid at the bottom.
5. Store the suspended plasmid at -20°C. The DNA is stable for at least one year from date of shipping when stored at -20°C.

RefSeq: [NM_026091.3](#)
RefSeq Size: 1241 bp

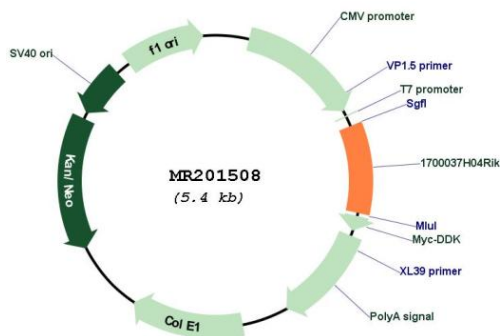
RefSeq ORF: 525 bp

Locus ID: 67326

UniProt ID: [Q9D1K7](#)
Cytogenetics: 2 F1

MW: 19.5 kDa

Product images:



Circular map for MR201508