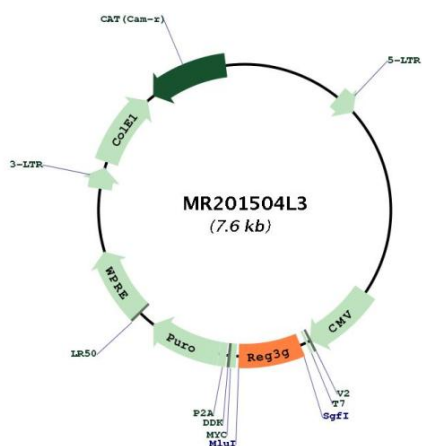


OTI Disclaimer:	The molecular sequence of this clone aligns with the gene accession number as a point of reference only. However, individual transcript sequences of the same gene can differ through naturally occurring variations (e.g. polymorphisms), each with its own valid existence. This clone is substantially in agreement with the reference, but a complete review of all prevailing variants is recommended prior to use. More info
OTI Annotation:	This clone was engineered to express the complete ORF with an expression tag. Expression varies depending on the nature of the gene.
Components:	The ORF clone is ion-exchange column purified and shipped in a 2D barcoded Matrix tube containing 10ug of transfection-ready, dried plasmid DNA (reconstitute with 100 ul of water).
Reconstitution Method:	<ol style="list-style-type: none">1. Centrifuge at 5,000xg for 5min.2. Carefully open the tube and add 100ul of sterile water to dissolve the DNA.3. Close the tube and incubate for 10 minutes at room temperature.4. Briefly vortex the tube and then do a quick spin (less than 5000xg) to concentrate the liquid at the bottom.5. Store the suspended plasmid at -20°C. The DNA is stable for at least one year from date of shipping when stored at -20°C.
RefSeq:	NM_011260.1
RefSeq Size:	774 bp
RefSeq ORF:	525 bp
Locus ID:	19695
UniProt ID:	O09049
Cytogenetics:	6 C3
Gene Summary:	This gene encodes a C-type lectin that demonstrates bactericidal activity. This gene is predominantly expressed in the distal small intestine where the encoded protein undergoes proteolytic processing by trypsin. Mice lacking the encoded protein exhibit altered mucus distribution, increased bacterial contact with the epithelium, and elevated inflammatory markers in the ileum, and low-grade inflammation. [provided by RefSeq, Jun 2016]

Product images:



Circular map for MR201504L3