

Product datasheet for **MR201475**

Ptp4a1 (BC086787) Mouse Tagged ORF Clone

Product data:

Product Type: Expression Plasmids
Product Name: Ptp4a1 (BC086787) Mouse Tagged ORF Clone
Tag: Myc-DDK
Symbol: Ptp4a1
Synonyms: MGC25304, C130021B01, Prl-1
Mammalian Cell Selection: Neomycin
Vector: pCMV6-Entry (PS100001)
E. coli Selection: Kanamycin (25 ug/mL)
ORF Nucleotide Sequence: >MR201475 ORF sequence
Red=Cloning site Blue=ORF Green=Tags(s)

TTTTGTAATACGACTCACTATAGGGCGGCCGGAATTCGTCGACTGGATCCGGTACCGAGGAGATCTGCC
GCC**CGATCGCC**

ATGGCTCGAATGAACCGCCCTGCTCCTGTGGAAGTCACATACAAGAACATGCGATTTCTTATTACACACA
ATCCAACCAATGCGACCTTAAACAAATTTATAGAGGAACCTAAGAAGTATGGAGTTACCACAATAGTAAG
AGTATGTGAAGCAACTTACGACTACTCTTGTGGAGAAAGAAGGCATTCATGTTCTTGACTGGCCTTTT
GATGATGGTGCACCACCATCAACCAGATTGTCGATGACTGGCTAAGTCTTGTGAAGATTAAGTTTCGTG
AAGAACCTGGTTGCTGTATTGCTGTCCATTGTGTGCGAGGCCCTTGGCAGAGCTCCGGTGCTTGTGGCCCT
AGCATTAAATTGAAGGTGAATGAAATATGAAGATGCAGTACAATTCATAAGACAAAAGCGCGTGGAGCT
TTTAACAGCAAGCAACTTTTGTATCTGGAGAAGTACCGTCCGAAAATGCGGCTCCGCTTCAAGGATTCCA
ATGGTCATAGAAACAACCTGTTGTATTCAA

ACGCGTACGCGGCCGCTCGAGCAGAACTCATCTCAGAAGAGGATCTGGCAGCAAATGATATCCTGGATT
ACAAGGATGACGACGATAAGGTTTAA

Protein Sequence: >MR201475 protein sequence
Red=Cloning site Green=Tags(s)

MARMNRPAPVEVYKNNMFLITHNPTNATLNKFI EELKKYGVTTIVRVCEATYD TTLVEKEGIHVLDPWF
DDGAPSNQIVDDWLSLVKIKFREEPGCCIAVHCVAGLGRAPVLVALALIEGGMKYEDAVQFIRQKRRGA
FNSKQLLYLEKYRPMRLRFKDSNGHRNNCCIQ

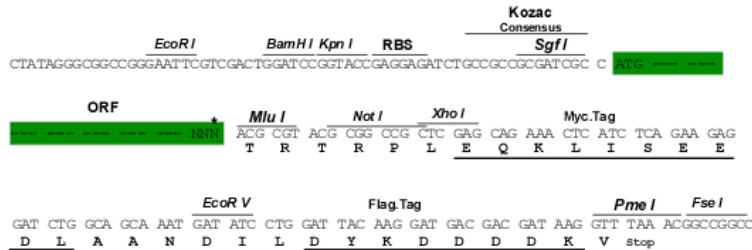
TRTRPLEQKLI SEEDLAANDILDYKDDDDKV

Restriction Sites: Sgfl-MluI



Cloning Scheme:

Cloning sites used for ORF Shuttling:



* The last codon before the Stop codon of the ORF

ACCN: BC086787

ORF Size: 519 bp

OTI Disclaimer: The molecular sequence of this clone aligns with the gene accession number as a point of reference only. However, individual transcript sequences of the same gene can differ through naturally occurring variations (e.g. polymorphisms), each with its own valid existence. This clone is substantially in agreement with the reference, but a complete review of all prevailing variants is recommended prior to use. [More info](#)
OTI Annotation: This clone was engineered to express the complete ORF with an expression tag. Expression varies depending on the nature of the gene.

Components: The ORF clone is ion-exchange column purified and shipped in a 2D barcoded Matrix tube containing 10ug of transfection-ready, dried plasmid DNA (reconstitute with 100 ul of water).

Reconstitution Method:

1. Centrifuge at 5,000xg for 5min.
2. Carefully open the tube and add 100ul of sterile water to dissolve the DNA.
3. Close the tube and incubate for 10 minutes at room temperature.
4. Briefly vortex the tube and then do a quick spin (less than 5000xg) to concentrate the liquid at the bottom.
5. Store the suspended plasmid at -20°C. The DNA is stable for at least one year from date of shipping when stored at -20°C.

RefSeq: [BC086787](#), [AAH86787](#)
RefSeq Size: 1829 bp

RefSeq ORF: 521 bp

Locus ID: 19243

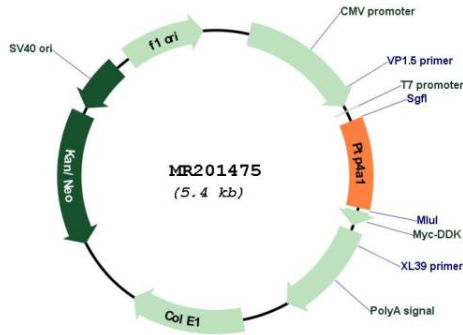
Cytogenetics: 1 B

MW: 19.8 kDa

Gene Summary:

Protein tyrosine phosphatase which stimulates progression from G1 into S phase during mitosis. May play a role in the development and maintenance of differentiating epithelial tissues (By similarity).[UniProtKB/Swiss-Prot Function]

Product images:



Circular map for MR201475