

Product datasheet for MR201430

Btg1 (BC006834) Mouse Tagged ORF Clone

Product data:

Product Type: Expression Plasmids
Product Name: Btg1 (BC006834) Mouse Tagged ORF Clone
Tag: Myc-DDK
Symbol: Btg1
Synonyms: A1426953; AW546738
Mammalian Cell Selection: Neomycin
Vector: pCMV6-Entry (PS100001)
E. coli Selection: Kanamycin (25 ug/mL)
ORF Nucleotide Sequence: >MR201430 ORF sequence
 Red=Cloning site Blue=ORF Green=Tags(s)

TTTTGTAATACGACTCACTATAGGGCGCCGGGAATTCGTCGACTGGATCCGGTACCGAGGAGATCTGCC
 GCC**CGATCGCC**

ATGCATCCCTTCTACACCCGGGCCGCCACCATGATAGGCGAGATCGCCGCCGGGTGCCTTCATCTCCA
 AGTTCCTCCGCACCAAGGGGCTCACGAGCGAGCGACAGCTGCAGACTTTCAGCCAGAGCCTGCAGGAGCT
 GCTGGCAGAACATTACAAACATCACTGGTCCCAGAAAAGCCGTGCAAGGGATCAGGTTACCGTTGTATT
 CGCATCAACCATAAGATGGATCCTCTGATTGGACAGGCAGCCAGCGGATTGGACTGAGCAGTCAGGAGT
 TGTTCCAGGCTTCTCCAAGTGAACCTCACACTCTGGGTTGACCCCTACGAAGTGTCTACCGATTGGAGA
 GGATGGCTCCATCTGCGTGTACGAAGCCTCACCAGCAGGAGGTAGCACTCAAAACAGCACCAACGTG
 CAAATGGTAGACAGCAGAATCAGCTGTAAGGAGGAACCTCTCTTGGGCAGAAACAAGCCCTTCCAAAACT
 ACAATATGATGACTGTATCAGGT

ACGCGTACGCGGCCGCTCGAGCAGAACTCATCTCAGAAGAGGATCTGGCAGCAAATGATATCCTGGATT
 ACAAGGATGACGACGATAAGGTTTAA

Protein Sequence: >MR201430 protein sequence
 Red=Cloning site Green=Tags(s)

MHPFYTRAATMIGEIAAAVSFISKFLRTKGLTSEQLQTFSQLQELLAEHYKHHWFPEKPKGSGYRCI
 RINHMKDPLIGQAAQRIGLSSQELFRLLPSELTLWVDPYEVSYRIGEDGSICVL YEASPAGGSTQNSTNV
 QMVDSRISCKEELLGRTSPSKNYNMNTVSG

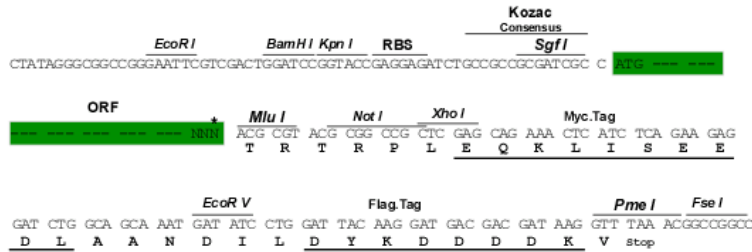
TRTRPLEQKLISEEDLAANDILDYKDDDDKV

Restriction Sites: Sgfl-MluI



Cloning Scheme:

Cloning sites used for ORF Shuttling:



* The last codon before the Stop codon of the ORF

ACCN: BC006834

ORF Size: 513 bp

OTI Disclaimer: The molecular sequence of this clone aligns with the gene accession number as a point of reference only. However, individual transcript sequences of the same gene can differ through naturally occurring variations (e.g. polymorphisms), each with its own valid existence. This clone is substantially in agreement with the reference, but a complete review of all prevailing variants is recommended prior to use. [More info](#)
OTI Annotation: This clone was engineered to express the complete ORF with an expression tag. Expression varies depending on the nature of the gene.

Components: The ORF clone is ion-exchange column purified and shipped in a 2D barcoded Matrix tube containing 10ug of transfection-ready, dried plasmid DNA (reconstitute with 100 ul of water).

Reconstitution Method:

1. Centrifuge at 5,000xg for 5min.
2. Carefully open the tube and add 100ul of sterile water to dissolve the DNA.
3. Close the tube and incubate for 10 minutes at room temperature.
4. Briefly vortex the tube and then do a quick spin (less than 5000xg) to concentrate the liquid at the bottom.
5. Store the suspended plasmid at -20°C. The DNA is stable for at least one year from date of shipping when stored at -20°C.

RefSeq: [BC006834](#), [AAH06834](#)
RefSeq Size: 1830 bp

RefSeq ORF: 515 bp

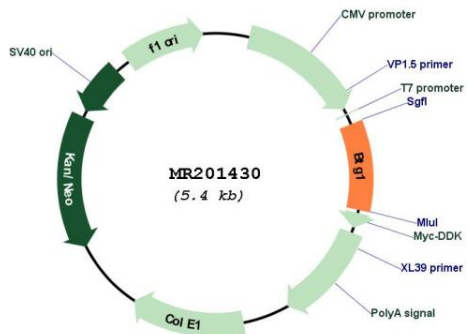
Locus ID: 12226

Cytogenetics: 10 C3

MW: 19.2 kDa

Gene Summary: Anti-proliferative protein.[UniProtKB/Swiss-Prot Function]

Product images:



Circular map for MR201430