

Product datasheet for MR201429

Ube2g1 (BC096474) Mouse Tagged ORF Clone

Product data:

Product Type: Expression Plasmids
Product Name: Ube2g1 (BC096474) Mouse Tagged ORF Clone
Tag: Myc-DDK
Symbol: Ube2g1
Synonyms: 2700059C12Rik; AI256795; AU014992; AW552068; D130023C12Rik
Mammalian Cell Selection: Neomycin
Vector: pCMV6-Entry (PS100001)
E. coli Selection: Kanamycin (25 ug/mL)
ORF Nucleotide Sequence: >MR201429 ORF sequence
 Red=Cloning site Blue=ORF Green=Tags(s)

TTTTGTAATACGACTCACTATAGGGCGCCGGGAATTCGTCGACTGGATCCGGTACCGAGGAGATCTGCC
 GCCCGGATCGCC

ATGACGGAGCTGCAGTCGGCGTCTACTGCGAAGACAGCTGCCAGAACTCAACAAAAATCCAGTGGAAAG
 GCTTTTCAGCAGGTTTAAATAGACGACAATGATCTCTATCGTTGGGAAGTCCTTATTATTGGTCCTCCAGA
 TACTTTTATGAAGGTGGTGTTTTAAAGGCTCATCTCACTTTCCAAAAGATTATCCCTCCGGCCTCT
 AAAATGAAATTCATTACAGAGATTTGGCACCCAAATGTTGATAAAAATGGTGATGTTGCATTTCTATTC
 TTCATGAGCCTGGGAGGATAAATATGGTTATGAGAAGCCAGAGGAACGCTGGTTACCTATCCATACTGT
 GGAACCATCATGATTAGTGTCATTTCTATGCTGGCAGATCCTAATGGAGACTCACCTGCAATGTAGAT
 GCTGCGAAAGAATGGAGGGAAGACAGAAACGGAGAATTTAAAAGGAAAAGTTGCCCGCTGTGTAAGAAAAA
 GCCAAGAAACTGCTTTTGAG

ACGCGTACGCGGCCGCTCGAGCAGAAACTCATCTCAGAAGAGGATCTGGCAGCAATGATATCCTGGATT
 ACAAGGATGACGACGATAAGGTTTAA

Protein Sequence: >MR201429 protein sequence
 Red=Cloning site Green=Tags(s)

MTELQSALLRRQLAELNKNPVEGFSAGLIDDNDLYRWEVLIIGPPDTLYEGGVFKAHLTFPKDYPLRPP
 KMKFITEIWHPNVDKNGDVCISILHEPGEDKYGYEKPEERWLPPIHTVETIMISVISMLADPNGDSPANVD
 AAKEWREDRNGEFKRKVARCVRKSQETAFE

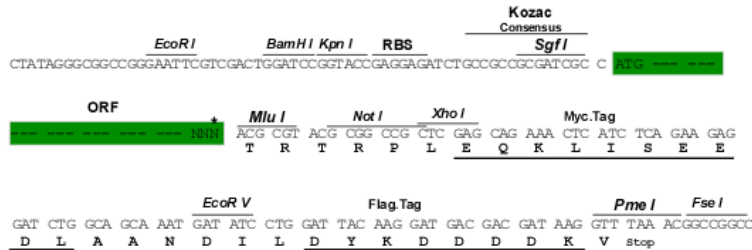
TRTRPLEQKLISEEDLAANDILDYKDDDDKV

Restriction Sites: Sgfl-MluI



Cloning Scheme:

Cloning sites used for ORF Shutting:



* The last codon before the Stop codon of the ORF

ACCN: BC096474

ORF Size: 510 bp

OTI Disclaimer: The molecular sequence of this clone aligns with the gene accession number as a point of reference only. However, individual transcript sequences of the same gene can differ through naturally occurring variations (e.g. polymorphisms), each with its own valid existence. This clone is substantially in agreement with the reference, but a complete review of all prevailing variants is recommended prior to use. [More info](#)
OTI Annotation: This clone was engineered to express the complete ORF with an expression tag. Expression varies depending on the nature of the gene.

Components: The ORF clone is ion-exchange column purified and shipped in a 2D barcoded Matrix tube containing 10ug of transfection-ready, dried plasmid DNA (reconstitute with 100 ul of water).

Reconstitution Method:

1. Centrifuge at 5,000xg for 5min.
2. Carefully open the tube and add 100ul of sterile water to dissolve the DNA.
3. Close the tube and incubate for 10 minutes at room temperature.
4. Briefly vortex the tube and then do a quick spin (less than 5000xg) to concentrate the liquid at the bottom.
5. Store the suspended plasmid at -20°C. The DNA is stable for at least one year from date of shipping when stored at -20°C.

RefSeq: [BC096474](#), [AAH96474](#)
RefSeq Size: 3289 bp

RefSeq ORF: 512 bp

Locus ID: 67128

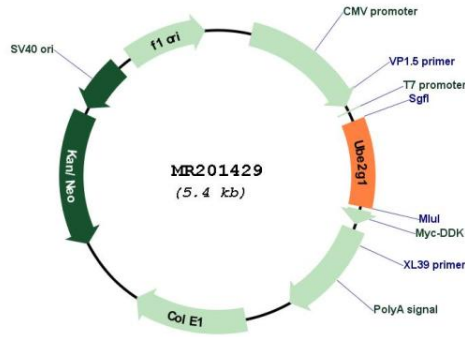
Cytogenetics: 11 B4

MW: 19.5 kDa

Gene Summary:

Accepts ubiquitin from the E1 complex and catalyzes its covalent attachment to other proteins. In vitro catalyzes 'Lys-48', as well as 'Lys-63'-linked polyubiquitination. May be involved in degradation of muscle-specific proteins. Mediates polyubiquitination of CYP3A4. [UniProtKB/Swiss-Prot Function]

Product images:



Circular map for MR201429